



The River Leam Pilot Catchment Project

Pilot Workshop: 14 December 2011.

The River Leam Pilot Catchment Project

Project Team

- David Hudson – Environment Manager
- Colin Sully – Env. Management Team Leader
- Rachel Ranger – Leam Pilot coordinator
- Steve Foster – Leam catchment Env. Officer



Where has this come from?

Water Framework Directive

- ⇒ Six yearly cycle of planning, action & review
- ⇒ Identify pressures, risks and impacts
- ⇒ Identify environmental objectives
- ⇒ Develop a programme of measures
- ⇒ Take action and undertake investigations
- ⇒ RBMPs published 2009, 2015, 2021
- ⇒ 2027 - achievement of WFD objectives.

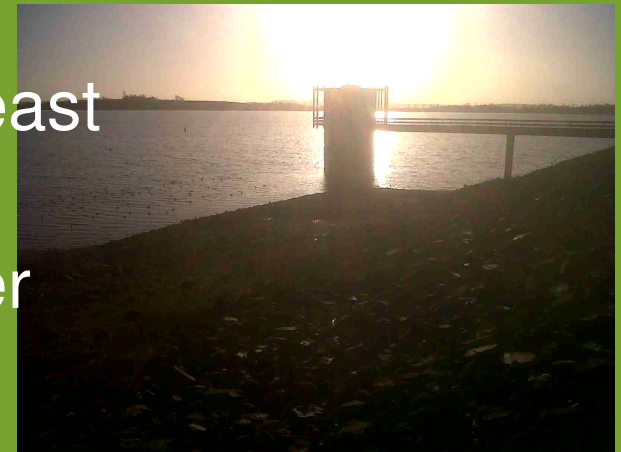
Role of Environment Agency for WFD

- ➔ Protect and enhance the environment
- ➔ Assess impact of human activity on water bodies
- ➔ Monitor the status of water bodies
- ➔ Prepare and consult on River Basin Management Plans
- ➔ Lead in producing and delivering a Programme of Measures
- ➔ Work with others to deliver WFD objectives – Leam Pilot
- ➔ **We are changing how we work with many sectors – modern regulation.**



Classification – Surface Waters

- Describes the health of a water body
- Ecological and chemical components
 - Ecological status – High, good, moderate, poor, bad
 - Chemical status – Good or fail
- Good status requires both to be at least 'Good'
- Pesticides that exceed drinking water standards also mean a fail.



What is the Leam Pilot

- ➔ DEFRA has asked us to trial improve ways of engaging with local organisations.
- ➔ The best bits will be used for our longer term approach.
- ➔ By December 2012 we will have an agreed catchment plan.

Why are we here ?

- ➔ Improved environment.
- ➔ To identify everyone's aims and goals.
- ➔ How can we all work together.
- ➔ Start the process of producing a plan for environmental improvement
- ➔ Understand what is happening in the catchment.
- ➔ Thinking about a way forward.



Pressures in the Leam & Upper Avon

