



Geography

Undergraduate Prospectus



Geography at Lancaster Environment Centre

Contents

1	Welcome to Lancaster
2	Geography as part of the Lancaster Environment Centre
4	Our Geography Degree Programmes
6	Geography Modules in Year 1
8	Geography (B.Sc. Honours/B.A. Honours)
10	Human Geography (B.A. Honours)
12	Physical Geography (B.Sc. Honours)
14	Physical Geography (Study Abroad) with a Year in Australasia (B.Sc. Honours)
15	Geography (with a Year in North America) (B.Sc. Honours/B.A. Honours)
16	Environmental Change and Sustainable Development (B.Sc. Honours)
20	Economics and Geography (B.A. Honours)
21	Modern Languages and Geography (B.A. Honours)
22	Teaching and Learning Geography at Lancaster
24	So What Do Our Graduates Think?
26	Careers
27	Lancaster University Research to Industrial Solutions
28	Admissions Information, Tuition Fees & Financial Support
29	Bursaries and Scholarships
30	Welcome from The SLUGS
32	University Life in Lancaster
33	Lancaster and the Local Area
34	Beyond Lancaster
35	Visiting Us
	Further Information and Contacts (Inside Back Cover)

Welcome!

If you were to imagine the ideal location to study Geography, it would be surrounded by National Parks, probably be close to the coast, and have easy links to major cities. Lancaster satisfies all these criteria, and hosts an innovative group of Geographers within one of Europe's strongest Environment Centres. We are very proud of our achievements and warmly welcome students aiming to work with one of the very best academic units in the country. The City of Lancaster is a very special, exciting but importantly friendly place to live and work. We aim to replicate these characteristics in our teaching programme. Welcome to Lancaster.



Lancaster Environment Centre Graduates and Staff

Welcome to Lancaster

Geography ...

... is distinctive because it links the social and physical sciences, each with their particular knowledges, approaches and skills. This is crucial for addressing the challenges of life today, ranging from globalization, technological change and environmental issues.

... graduates go into jobs for which the intellectual and practical skills gained in a Geography degree are advantageous. Geographers' careers are many and varied, including jobs in research, environmental consultancy, marketing, government, teaching, and more...

Geography at Lancaster ...

... will inspire and encourage you to develop both personally and intellectually.

... is a thriving academic community of which our students are key members. The open and friendly atmosphere allows high levels of interaction between students, academic staff, researchers and support staff.

... offers you the chance to work in a purpose-built building which forms part of the Lancaster Environment Centre (LEC).

Geography Teaching at Lancaster ...

... is 'Excellent' and received the highest possible score in the latest official inspection of UK Geography departments. Our strong international research reputation is important in ensuring high quality teaching and provides us with fresh ideas and approaches for our degree programmes.

... offers stimulating, high-quality and innovative teaching that builds on students' diverse learning approaches.

... is award winning, Professor Barbara Maher has won the Pilkington Prize for teaching, Dr Andrew Folkard is also a past recipient of the prize.

The Degrees Schemes at Lancaster ...

... are flexible. We are committed to ensuring that each individual chooses a degree programme which most closely matches their interests and allows for change along the way. Whilst some students know early on that they lean towards physical or human geography, others are less certain. At the end of the First Year, most students continue with their UCAS choice of degree scheme; others change to a different Geography degree scheme or take their minor subject further. With over 100 modules in Part 2 across the Environment Centre choice remains high.

... allow you to gain practical experience of a range of environments through an extensive programme of field courses visiting cities like New York, Kairouan (Tunisia) and challenging rural environments like northern and southern Spain, Croatia, the Brazilian Amazon and Iceland.

... allow you to take optional modules including 'Communicating Geography' in which you teach geography as a classroom assistant in a local school.

... offer North American and Australasian exchange schemes, an opportunity to master a different educational and cultural environment, and to develop intellectually, personally and socially.

... offers you the opportunity to work with industry through placements and taught modules.



"It's a great feeling to guide students to the leading edge of their subject, where things are new, important, dynamic; to feel that excitement of knowledge, discovery, learning."

*Professor Barbara Maher,
winner Pilkington Prize in Teaching*



Geography as part of The Lancaster Environment Centre (LEC)

The LEC Concept

At Lancaster, Geography is at the heart of the Lancaster Environment Centre (LEC). This was formed as part of an £8.25 million project to bring together environmental teaching and research under the same operational umbrella. Being a part of LEC gives Geography students the advantage of being part of the Universities largest department, with new enhanced facilities, high specification offices, teaching rooms, laboratories and communal spaces.



Enterprise and Business Partnerships

LEC is unique in housing some 20 environmental businesses within our building. This offers students a major opportunity to gain employment experience within their degrees and staff to enhance the economic impact of their research. An example of the latter is the £9.8m Centre for Global Eco-innovation which supports 50 PhD students.

Student Learning in LEC

Geography students in LEC have one of the widest ranges of module choices found anywhere in the UK. For example, as well as traditional physical geography modules our students can also select modules in ecology, climate science and volcanology. Being part of LEC does not mean that all our students are interested in Environmental Geography. Indeed we offer a range of cutting edge social, historical and cultural geography modules taught by leading academics in the field. Geography is a diverse and varied subject – the opportunities afforded through the Lancaster Environment Centre allow you to explore almost every possible corner of the geographical discipline.



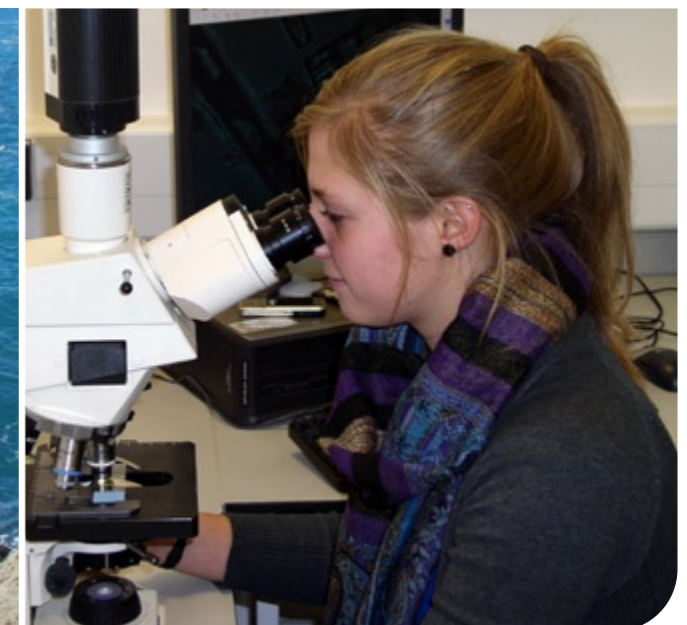
Learning and Work Placements

Through the Enterprise and Business Partnerships

As part of their degree, our students can also take taught modules and research placements through our in-house Enterprise and Business Centre. These opportunities focus on the development of the academic and practical skills relevant to gaining employment with companies and organizations committed to seeking solutions to real environmental problems (see page 27 for more details).



The Gordon Manley Building
Lancaster Environment Centre





everyone studies covering techniques and concepts in Geography. All students also take a number of optional modules which let you tailor your degree to your particular interests. One module in another subject outside Geography, continued from the first year, can be taken in Year 2, but there are enough courses to allow you to study only Geography. There are a number of optional overseas field courses.

Final Year

In your final year, your dissertation provides an opportunity for you to perform original geographical research on a topic of your choice, guided by your supervisor. In addition, you choose six modules from a range of areas of Geography. These modules are taught by staff with research expertise in the topics covered. One module in another subject outside of Geography, continued from the first or second years, may be taken in the third year, but again you can choose to study only Geography.



Our Geography Degree Programmes

Geography Degrees

- B.Sc. Geography** (UCAS code: F800)
- B.A. Geography** (UCAS code: L700)
- B.A. Human Geography** (UCAS code: L720)
- B.Sc. Physical Geography** (UCAS code: F840)
- B.Sc. Physical Geography (Study Abroad) with a Year in Australasia** (UCAS code: F847)
- B.Sc. or B.A. Geography (North America)** (UCAS codes, F802/L701)
- B.Sc. Environmental Change and Sustainable Development** (UCAS code: F755)

Joint Degrees

- B.A. Economics and Geography (UCAS code: LL71)
- B.A. French Studies and Geography (UCAS code: LR71)#
- B.A. German Studies and Geography (UCAS code: LR72)#
- B.A. Spanish Studies and Geography (UCAS code: LR74)#

= four-year degrees with a year abroad.

Overall Format of Degrees:

Year 1

Most of our students chose to take the 'Double Part 1' in Geography – i.e. they spend two thirds of their first year taking Geography modules leaving one third available to choose a 'minor' subject in another department. There are over 50 minor subjects to choose from, and we offer personal advice to help you decide. Most students select subjects related to their main degree. Human geographers normally choose arts or social sciences such as history, psychology, education, sociology, politics, marketing or information technology. Physical geographers tend towards science subjects like environmental or biological sciences, mathematics or statistics, or information technology. This distinctive system offers a breadth of education that many employers appreciate.

In Year 1, students can expect 15 contact hours per week, of which approximately nine will be in Geography and the remainder from the minor subject. Each official contact hour should be supplemented by 4—5 hours of personal study time.

Year 2

In Year 2, you concentrate on Geography, or Human Geography or Physical Geography, if you are on those degree programmes. There are a core of modules that



Other Joint Degrees

With special permission, the flexible Lancaster system allows students and staff to construct non-standard degree programmes tailored to the students' individual interests. Students often follow such a route when they have taken a subject in Year 1 and wish to continue to study that subject in equal measure alongside Geography in Years 2 and 3. Recently, students have graduated with joint degrees combining Geography with Politics, Management and Organisation, Sociology, Marketing and Criminology. Please note, however, the suitability of combining subjects as joint degrees is carefully assessed by geography staff and is always dependent upon timetabling constraints.





Geography Modules in **Year 1**

Our year 1 modules introduce you to geography at Lancaster. Double Part 1 Geography includes both Human and Physical Geography modules and two Geographical/interdisciplinary skills modules. One other Part 1 subject can then be chosen from another department. Some students choose to take just one Part 1 course in either Human or Physical Geography together with the single course in Geographical skills. Two other Part 1 subjects are then taken from outside Geography.

All Part 1 students taking geography belong to small tutorial groups which use lecture topics as a vehicle for learning and consolidating study skills. Fieldwork in areas such as the Lake District, Yorkshire Dales, The Fylde Coast and Manchester, is another important part of all first-year geography courses.

6



"I made the decision to take Geography at Lancaster the day after my A-Level results in a spur of the moment kind of action, but I can honestly say that being here studying this course has led to a fantastic three years that I wouldn't dream of changing. Studying both physical and human geography in first year was perfect for creating a foundation of knowledge, helping decide what is interesting to yourself and since then I haven't looked back, indulging myself in topics such as transformative and post-colonial geographies in Africa to political and societal studies in the Amazon to visiting New York firsthand to evaluate modern city inequalities. It's not only the topics, but the people that you meet and the skills that you learn that make this degree what it is, and I'll enter the next stage of my life, although not sure of where I'm heading yet, knowing that this section was well worth the time I invested."

Jack Watson, BA Geography



Geography students surveying in the Lake District



Human Geography: Society and Space...

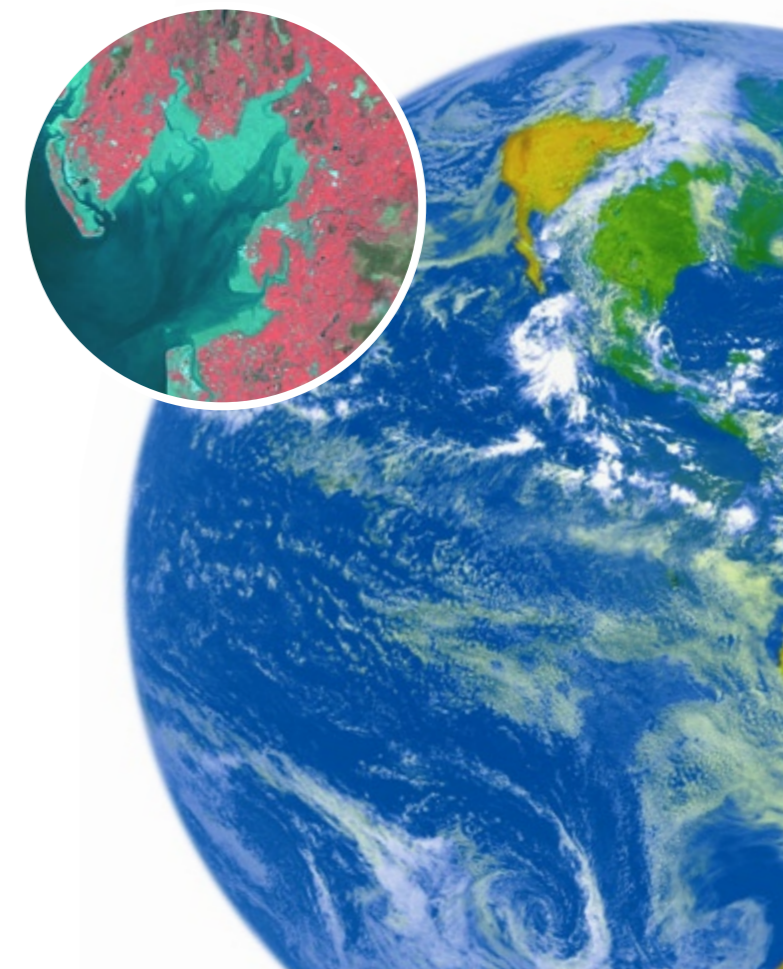
provides an introduction to contemporary human geography and focuses on the interaction between people and places at a variety of spatial scales. Key themes include urbanisation, globalisation of the World economy, the spatial dimensions of social and economic inequalities, and issues of environmental justice and geopolitics.

Physical Geography: Environmental Processes and Systems...

introduces degree level physical geography by examining environmental processes and their impacts at a range of spatial scales. Global climate and associated environmental change and the processes which produce distinctive landscapes are all explored using examples drawn from a variety of environments. Key themes span the disciplinary boundaries of geography, biology and environmental science and address environmental issues in the 21st century.

Geographical/interdisciplinary skills...

provides an introduction to the skills used by geographers to analyse problems in both human and physical geography. The course focuses on both quantitative and qualitative techniques, computer cartography, geographical information systems (GIS) and remote sensing. All students also complete a group research project that runs throughout the module and allows them to apply the skills they have learned to an appropriate research problem.



Geography

(B.Sc. Honours) degree programme (UCAS Code: F800)

(B.A. Honours) degree programme (UCAS Code: L700)



Our geography degree programme lets you explore the full range of human, environmental and physical geography through any of the optional modules we offer, all taught by staff who are actively researching in these areas. A key feature of the degree is that you will be exposed to the unique strengths of geography and its ability to investigate interrelationships across space, between people, and between humans and the environment. Increasingly, this ability to deal with issues that span local to global scales, such as climate change and world trade, is becoming highly valued by employers across the public and private sectors. A range of optional overseas field courses in the second and third years will allow you to experience, at first hand, different societies, environments and cultures. Students taking the B.A. degree will usually be expected to specialise in environmental and/or human geography in year 3 and will not take physical geography modules.

8

Degree structure:

Year 1

Double Part 1 Geography + one other subject.

Year 2

Core modules

Techniques

Concepts in Geography

Optional modules

Enterprise for the Environment

Development, Geography and the Majority World

Geographies of Nature

Tunisia †

Earth Surface Processes

Interacting Landscapes: Biogeography and Geomorphology

Investigating Mediterranean Environments *

Environment and Society

Ecosystem Services and Society

Communicating Geography

Glacier/Landscape Interactions: Iceland *

Year 3

Dissertation

Optional modules

Enterprise for the Environment

Africa: Geographies of Transformation

Environment, Politics and Society in Amazonia

Labour in a Globalising Economy

Multispecies Geographies

Urban Infrastructure in a Changing World

Cities and Globalization

Geographies of Health

Amazon Field course*

New York: Inequality and the City *

Geomorphology of Northern Spain *

Glacial Systems

Holocene Environmental Change

Recent Change in Aquatic Environments

Rivers, Lakes and Estuaries

Coastal Processes

Water and Environmental Management in a

Mediterranean context *

Integrated Water Management

Geographical Information Systems: Principles and Practice

Environmental Remote Sensing

Quaternary Environmental Change

Environmental Magnetism

* = Field courses † = See footnote on page 11



Featured Field Course:

New York: Inequality and the City

In this course, we study the links between cultural, economic, political and social processes and the ways they influence urban landscapes and life in New York City. Students get to experience many of New York's cosmopolitan districts and through independent projects consider the processes that make it such a contested yet popular city.



"The Geography field trips offered at Lancaster not only enhance learning but also enable you to meet more people on your course. Experiencing New York first hand was fantastic and I gained insight which you can't get from lectures."

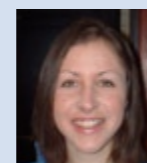
Iain Hornshaw, BSc Geography



Lancaster Geography students at the Statue of Liberty



9



"I have thoroughly enjoyed my last three years studying Geography at Lancaster and will leave having gained good memories, great experiences and increased confidence. The diverse range of modules on offer has allowed me to further my understanding of the physical, social, cultural, economic and political foundations of our world, with the structure of the course allowing me to shape my degree to my interests. I have found the lecturers and staff are approachable and supportive, which has allowed me to achieve my potential. Next year I will be undertaking a PGCE to teach Geography at Secondary school and am looking forward to sharing my enthusiasm for this great subject."

Heather Ponton-Brown, BSc Geography



© Peter Glege (vispax.com)

Human Geography

(B.A. Honours) degree programme (UCAS Code: L720)

The Human Geography degree lets you explore in depth the human and environmental aspects of geography. A wide range of modules in human geography are offered at Lancaster. Our staff include experts on social and cultural geography, globalization and development. You will learn about different methods of studying human geography, including computer-based 'geographical information systems', and qualitative research techniques. You will also consider the various philosophical approaches to human geography. There are a number of optional overseas field courses in the second and third years that give students hands-on experience of using human geography field techniques. This will encourage you to develop the ability to think geographically from different perspectives, which will help you both as a student and in your future career.

10



Lancaster Geography students outside the United Nations building (New York)

Degree structure:

Year 1

Double Part 1 Geography + 1 other subject
OR
Part 1 Human Geography + 2 other subjects

Year 2

Core modules

Techniques
Concepts in Geography

Optional modules

Enterprise for the Environment
Geographies of Nature
Tunisia †
Environment and Society
Development, Geography and the Majority World
Ecosystem Services and Society
Communicating Geography

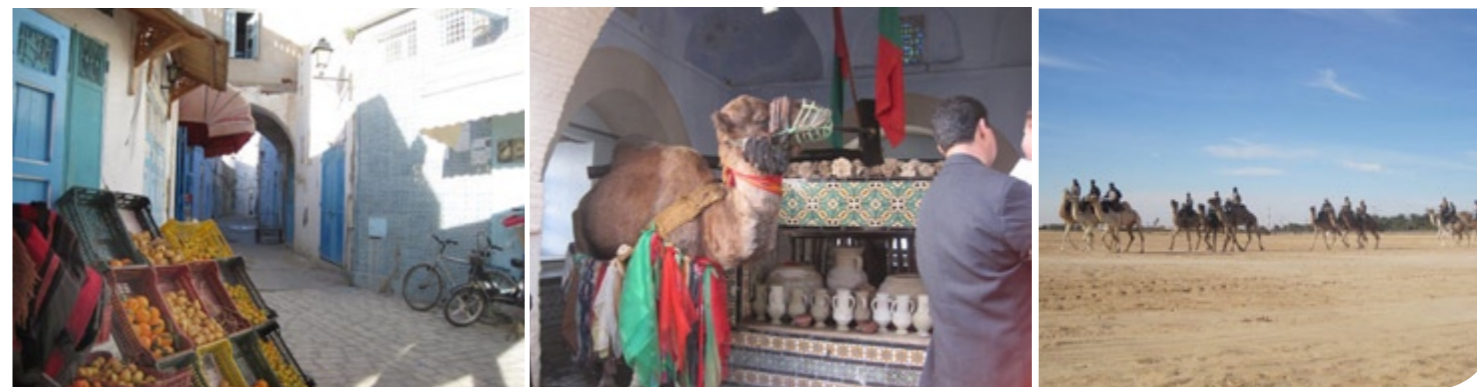
Year 3

Dissertation

Optional modules

Enterprise for the Environment
Geographies of Health and Wellbeing
Africa: Geographies of Transformation
Environment, Politics and Society in Amazonia
Labour in a Globalising Economy
Multispecies Geographies
Urban Infrastructure in a Changing World
Integrated Water Management
Geographical Information Systems: Principles and Practice
New York: Inequality and the City *
Water and Environmental Management in a Mediterranean context. *

* = Field course † = See footnote on page 11



Featured Field Course:

Tunisia: Post-Colonial Reflections

This field course introduces students to the cultural, economic and religious diversity and transition in Tunisia. Tunisia is a particularly fascinating country in all of these respects being a moderate Islamic country in North Africa with a strong Mediterranean influence. The course provides students with the opportunity to apply ethnographic methods (specifically participant observation, reflexive diaries and semi-structured interviewing) in a selection of quite different cultural settings (rural and urban, including Berber and Bedouin cultures: local markets, mosques and Medina architecture).

† **Footnote:** This field course is subject to change following political developments in North Africa over the last few years.



11



Iceberg calving, southern Iceland

Physical Geography

(B.Sc. Honours) degree programme (UCAS Code: F840)

The Physical Geography degree at Lancaster is an opportunity to explore this subject in depth through an exceptional range of modules within a unique natural landscape. This degree programme enables students to understand how environments have changed in the past, what controls the dynamics of environments in the present and how we can predict changes in the future. All the major components of the 'earth system' are considered - the lithosphere (rocks), hydrosphere (water), biosphere (living things) and the atmosphere (particularly processes associated with climate change). One of the unique things about physical geography at Lancaster is our location in the Environment Centre. This means complementary modules from earth and environmental sciences or ecology and biology programmes can be taken as part of your degree scheme.

Physical geography is a hands-on subject and you will acquire a wide range of laboratory and field skills relevant to your degree and future careers. Optional week-long field courses take place in the second and third years, giving physical geography students experience of solving research problems and using field techniques.



"By focusing on the scientific and physical aspects of the degree course offered at Lancaster, I knew I was playing to my own strengths within the subject. Soon after leaving I started working as a Land Surveyor in my local area. This drew directly off the skills that I had acquired during field courses during my studies."

Michael Killingbeck, BSc Geography

Degree structure:

Year 1

Double Part 1 Geography + 1 other subject.
OR
Part 1 Physical Geography + 2 other subjects.

Year 2

Core modules

Techniques
Concepts in Geography
Earth Surface Processes
Interacting Landscapes: Biogeography and Geomorphology

Optional modules

Enterprise for the Environment
Investigating Mediterranean Environments *
Environment and Society
Geographies of Nature
Ecosystem Services and Society
Communicating Geography
Glacier/Landscape Interactions: Iceland *

Year 3

Dissertation

Optional modules

Enterprise for the Environment: Industrial Placement
Geomorphology of Northern Spain *
Glacial Systems
Holocene Environmental Change
Recent Change in Aquatic Environments
Rivers, Lakes and Estuaries
Coastal Processes
Water and Environmental Management in a Mediterranean context *
Integrated Water Management
Geographical Information Systems: Principles and Practice
Environmental Remote Sensing
Quaternary Environmental Change
Environmental Magnetism

* = Optional field courses



Featured Field Course

Glacier/Landscape Interactions: **Iceland**

This field course, for second year students, takes place in a dynamic and exciting field environment, southern Iceland. Here, glaciers interact with the volcanic environments and processes of this mid-ocean ridge island. The course is designed to stimulate

learning in the physical sciences and provide first hand experience of observing glaciers and glacier-landscape interactions in the field. The week-long course is available to all students taking physical geography modules in their first and second years of study.





Physical Geography (Study Abroad) with a Year in Australasia

(B.Sc. Honours) degree programme (UCAS Code: F847)



This unique degree provides an exciting year-long opportunity to study Physical Geography at an Australian or New Zealand university. The year abroad is the second of a three-year study programme. Students are guaranteed a place at an Australasian university (subject to academic performance in their first year), therefore competition for places and entry requirements are high (AAA at A level). **Those not accepted for this degree programme will automatically be offered a place on our three-year BSc in Physical Geography (F840).** If you have achieved AAA at A level but have not applied for this degree programme and want to switch programmes, you can transfer onto it at the end of Year 1 if there are places available.

During your year in Australasia, you can choose from a range of Physical Geography modules from July to mid-November and between February and June. These include local field courses. The summer vacation of November to February is available for travel, paid work or fieldwork. The grades you are awarded in Australia or New Zealand will count towards your final degree.

Exchange places are currently available in Australasia at the Universities of: Monash (Victoria), South Australia (Adelaide), Macquarie (Sydney), Griffith (Brisbane), and Murdoch (Western Australia), Australian National University (Canberra), Wollongong (New South Wales), and the University of New South Wales, as well as Victoria University of Wellington and Waikato in New Zealand.

Degree structure:

Year 1
Double Part 1 Geography + 1 other subject.
OR
Part 1 Physical Geography + 2 other subjects.

Year 2 (in Australia or New Zealand)

Optional modules may include:
Soils and Geomorphology
Land Degradation and Catchment Management
Environmental Assessment
Fluvial Geomorphology
Environmental Prehistory of Australia
Environmental Planning
Global Climates
Soils and Land Use
Natural Environments and Human Impacts
Biogeography
Quaternary Ecology and Ecosystem Management
Field Studies in Physical Geography

Year 3

Dissertation
Optional modules
Geomorphology of Northern Spain *
Glacial Systems
Holocene Environmental Change
Recent Change in Aquatic Environments
Rivers, Lakes and Estuaries
Coastal Processes
Water and Environmental Management in a Mediterranean context *
Integrated Water Management
Geographical Information Systems: Principles and Practice
Environmental Remote Sensing
Quaternary Environmental Change
Environmental Magnetism

* = Optional field courses



"I took a place at the Victoria University of Wellington, New Zealand, and it really has lived up to expectations. There is always something going on, whether it is clambering around on Volcanoes, 'tramping' around the temperate rainforests and glaciers of the South Island or watching the All Blacks with a pint. There is the opportunity to take a wide range of Geography and Earth/Environmental Science courses through the year so whether your year will involve the golden beaches and Outback Safaris of Australia or the wild, wet and rugged Middle Earth that is New Zealand it's sure to be fantastic!"

Darren Axe, BSc Physical Geography (Australasia)



Geography (North America)

(B.Sc./B.A. Honours) degree programme (UCAS Code: F802/L701)

These degree schemes present a unique opportunity for you to investigate at first hand the diverse physical environments, societies and cultures in the USA or Canada. Competition for places on this scheme, which guarantees a placement in North America, is high and so entry requirements are AAA at A level. **Those not offered a place on this scheme will automatically be offered a place on our three-year BSc or BA Geography schemes (F800 & L700).** If you have achieved AAA at A level but have not applied for this degree programme and want to switch programmes, you can transfer onto it at the end of Year 1 if there are places available.

The specific modules that you will follow will depend on the particular North American university that you attend, but the institutions with which we have links all offer modules that are complementary to our degree programmes. The grades you are awarded in North America will count towards your final degree. You will have extensive opportunities for fieldwork and travel in North America.

Exchange places are currently available at a number of partner institutions including, in the USA, North Carolina State University, University of Colorado, University of Maine, University of Florida, University of Virginia, Michigan State University. In Canada, University of Alberta, University of Waterloo, University of British Columbia, University of Toronto.



"Geography at Lancaster is a wide ranging and fascinating course, which has provided me with the tools I need to develop my academic career. The diversity of topics covered means that I have been able to explore interests in many areas. The department gave me an unparalleled level of support, which has been invaluable to me in achieving my goals. With their guidance and enthusiastic support I was able to carry out original research on the healthcare system in the Philippines for my undergraduate dissertation. This was a unique experience that helped shape my plans for the future."

Rachel Winter, BA Geography

Degree structure:

Year 1
Double Part 1 Geography + one other subject.

Year 2 (in North America)

Optional modules may include
Soils and Geomorphology
Environmental Assessment
Fluvial Geomorphology
Biogeography
Ecology
GIS
Global climates
Social and Cultural Geography
Economic Geography and Globalization
Development Geographies
Political Geography
Rural Geographies
Research Methods

Year 3

Dissertation
Optional modules
Enterprise for the Environment
Africa: Geographies of Transformation
Environment, Politics and Society in Amazonia
Geographies of Health and Wellbeing
Cities and Globalization
Labour in a Globalising Economy
Multispecies Geographies
Urban Infrastructure in a Changing World
New York: Inequality and the City *
Geomorphology of Northern Spain *
Glacial Systems
Holocene Environmental Change
Recent Change in Aquatic Environments
Rivers, Lakes and Estuaries
Coastal Processes
Water and Environmental Management in a Mediterranean context *
Integrated Water Management
Geographical Information Systems: Principles and Practice
Environmental Remote Sensing
Quaternary Environmental Change
Environmental Magnetism

* = Field courses





Zhangmu, Tibet (Photo: Liz Turner)

Environmental Change and Sustainable Development

(B.Sc. Honours) degree programme (UCAS code: F755)

The world faces some major environmental problems whose solutions lie between traditional disciplines. Issues such as water resources, climate change and food security are all critical to maintaining our planet and the future sustainability of human societies.

- how environments have changed in the past,
- how they can be monitored today, and
- how environments may change, and be sustainably managed in the future.

The degree enables students to understand the approaches that can be used to reconstruct environmental change at the Earth's surface and in the atmosphere. You will discover the ways in which humans have caused, responded and adapted to environmental changes and develop an appreciation of how humans are increasingly influencing the character and rates of environmental change at present. You will also understand the social, political, economic, religious and legal implications of environmental change.

You will learn how the environment can be monitored from local to global scales in order to achieve sustainability, specifically including approaches such as GIS and remote sensing.



Why Study Environmental Change at Lancaster?

Lecturing staff at Lancaster have unique expertise in the study of environmental change. The course draws on the research of staff from throughout the Environment Centre and draws on the expertise of geographers, environmental scientists, ecologists and biologists to examine environmental change and sustainable development.

- an interdisciplinary knowledge of human, physical and environmental aspects of geography especially at the human-physical interface;
- an ability to plan, execute and report on fieldwork and geographical research in the human and physical realms;
- spatial awareness and observation;
- an ability to interpret geographical evidence and recognise others' viewpoints;
- an appreciation of the ethical issues in geographical debates, as both a researcher and a citizen.

Field skills are taught both at Lancaster and during residential field courses. A week-long field course in southern Spain or Iceland takes place in the second year and there are also a number of field courses normally available in the third year, including Spain and the Mediterranean, Croatia and even Amazonia.



Degree structure

Year 1

Double Part 1 Geography + 1 other subject

Year 2

Core modules

Geographical Techniques
Concepts in Geography

Optional modules

Enterprise for the Environment
Earth Surface Processes
Ecosystem Services and Society
Interacting Landscapes: Biogeography and Geomorphology
Investigating Mediterranean Environments *
Geographies of Nature
Environment and Society
Glacier/Landscape Interactions: Iceland *

Year 3

Dissertation

Optional modules

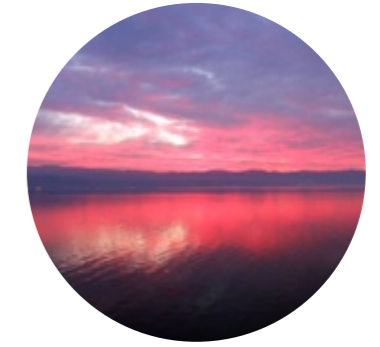
Enterprise for the Environment
Africa: Geographies of Transformation
Environment, Politics and Society in Amazonia
Multispecies Geographies
Geomorphology of Northern Spain *
Glacial Systems
Holocene Environmental Change
Quaternary Environmental Change
Recent Change in Aquatic Environments
Rivers, Lakes and Estuaries
Integrated Water Management
Coastal Processes
Geographical Information Systems: Principles and Practice
Environmental Remote Sensing
Water and Environmental Management in a Mediterranean context. *
Environmental Magnetism

* = Optional field courses



"Doing geography (environmental change) at Lancaster has been thoroughly enjoyable. Both the human and physical elements of the course cover different aspects of environmental change which are approached very differently to that learnt at A Level. The lecturers and your tutors are extremely approachable and are always there if you need some help or advice."

Helen Wike, BSc Environmental Change and Sustainable Development



Featured Field Course:

Investigating Mediterranean Environments: **Sierra Nevada, Spain**

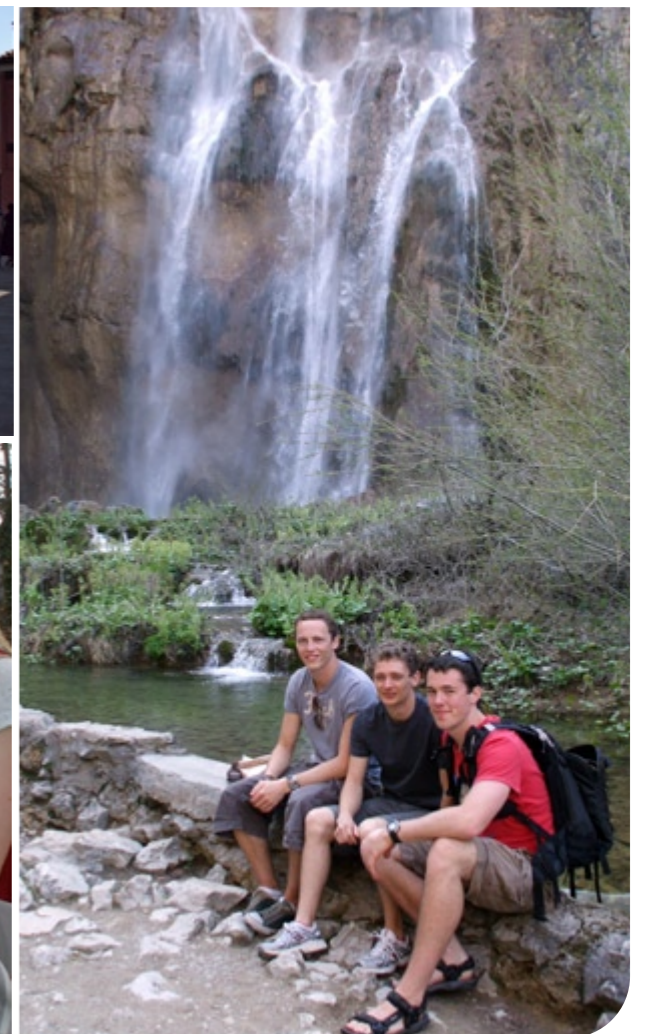
This course visits an area in Spain of steep environmental gradients, ranging from semi-arid conditions along the Mediterranean coast up to the tundra of the peaks of the Sierra Nevada. Working in groups, students gain practical experience in designing, implementing and critically evaluating research projects that investigate diverse problems, such as: sediment transport in highly dynamic river systems, the effects of agricultural terrace abandonment on biodiversity, spatial and temporal variations in microclimates within vegetation canopies, controls on landslide activity, altitudinal variations in soils and vegetation, and the relationships between process and form on alluvial fans.



"This was the best field trip I have ever experienced! We learnt so much and developed so many skills that we had accumulated over the last year.

The lecturers were awesome and it was a fantastic opportunity to get to know other students in both a working and social environment in a beautiful region of Spain!"

Sophie Thickitt, BSC Geography





© Hannes Keller (wispix.com)

Economics and Geography

(B.A. Honours) degree programme (UCAS Code: LL71)

This degree programme allows you to take advantage of the complementary aspects of Economics and Geography. Economics explores the production and distribution of wealth at the level of the firm and household (micro-economics) as well as at the national and international levels (macro-economics). They address important contemporary issues like public policy, banking, global poverty, climate change and regional and urban growth. Geography considers the spatial and environmental impacts of such topics. It analyses such issues as natural resource management, environmental conservation planning, sustainable development, urban neighbourhood dynamics, transport policy and geopolitics. Graduates in Economics and Geography acquire an incisive perspective and analytical skills that are greatly valued by employers in many fields, including corporate planning, economic consultancy, the financial sector and the civil service.

20

Degree structure:

Year 1
Double Part 1 Geography and Economics.
OR
Part 1 Human Geography modules, Economics and one other subject.

Year 2
Core Geography modules
Techniques
Concepts in Geography
Development, Geography and the Majority World

Optional Geography modules
Enterprise for the Environment
Ecosystem services and Society
Geographies of Nature
Tunisia †
Environment and Society

Economics modules
Microeconomic Principles
Macroeconomic Principles

Managerial Economics
Business and the Macroeconomy

Year 3
Project
Optional Geography modules
Enterprise for the Environment
Africa: Geographies of Transformation
Geographies of Health and Wellbeing
Environment, Politics and Society in Amazonia
Labour in a Globalising Economy
Multispecies Geographies
Urban Infrastructure in a Changing World
Water and Environmental Management in a Mediterranean context. *
Integrated Water Management
Geographical Information Systems: Principles and Practice
New York: Inequality and the City *

* = Field courses † = See footnote on page 11

Optional Economics modules
Mathematical Economics
Econometric Models, Techniques and Applications
Economics of the European Union
Human Resource Economics
Business Enterprise in Modern Britain
Economics of Developing Countries
Emerging Economies
Monetary Economics
International Money and Finance
Urban and Regional Economics
International Trade and Commercial Policy
International Business
Industrial Economics
Economics of Competitive Strategy
Economics of Advertising

"Geography and Economics is a perfect complementary combination to study. I chose Lancaster University because of its reputation and I have not been disappointed. The course options are varied, challenging and have allowed me to study for a unique degree with excellent career prospects."



Emily Pile, BA Economics and Geography

Modern Languages and Geography

(B.A. Honours) degree programmes

French Studies and Geography (UCAS code: LR71)

German Studies and Geography (UCAS code: LR72)

Spanish Studies and Geography (UCAS code: LR74)



Lancaster University has pioneered a distinctive 'area studies' approach to European language degree programmes that offers an exciting and intellectually challenging combination of the study of languages, cultures and societies. This approach is highly complementary to the various strands of social, political, economic and cultural geography which deal with issues such as social justice, exclusion, gender norms, multi-culturalism, poverty and crime, the EU and the nation state and global geopolitics. Year 3 of this 4-year degree programme is spent in a country where people speak the language you are studying. Activities may include following modules at a university or business school, or teaching English in a secondary school. The work done during your year abroad is assessed and contributes towards your degree. By studying modern languages and Geography you will acquire a unique combination of knowledge, skills and experience that is highly attractive to employers across a range of sectors.



"Studying Modern Languages and Geography at Lancaster University afforded me opportunities which reached far beyond those of other courses. Throughout my degree at Lancaster I was able to not only travel, but live in a variety of countries which enriched my understanding of the social and cultural concepts which are passionately taught by Lancaster University staff."

All members of the department were incredibly helpful throughout my time at Lancaster University and offered me support throughout my 3rd year whilst abroad; studying cultural change in Spain. This opportunity allowed me not only to enrich my academic understanding of the world, but also provided me with skills that many employers now look for within the European and global markets."

Dominic Crowley, BA Modern Languages and Geography

Degree structure:

Year 1
Double Part 1 Geography and the language.
OR
Part 1 Physical or Human Geography, the language and one other subject.

Year 2
Core Geography modules
Techniques
Concepts in Geography
Optional Geography modules
Enterprise for the Environment
Development, Geography and the Majority World
Geographies of Nature
Tunisia †
Earth Surface Processes
Interacting Landscapes: Biogeography and Geomorphology
Environment and Society
Ecosystem Services and Society
Glacier/Landscape Interactions: Iceland *

Year 3
Year abroad

Year 4
Project
Optional Geography modules
Enterprise for the Environment
Africa: Geographies of Transformation
Environment, Politics and Society in Amazonia
Labour in a Globalising Economy
Multispecies Geographies
Urban Infrastructure in a Changing World
Geographies of Health and Wellbeing
New York: Inequality and the City *
Geomorphology of Northern Spain *
Amazon Field Course *
Glacial Systems
Holocene Environmental Change
Recent Change in Aquatic Environments
Coastal Processes
Water and Environmental Management in a Mediterranean context *
Approaches to Environmental Management
Integrated Water Management
Geographical Information Systems: Principles and Practice
Environmental Remote Sensing
Quaternary Environmental Change
Rivers, Lakes and Estuaries
Environmental Magnetism

* = Field courses † = See footnote on page 11

Four modules in Modern Languages

21



How does geography at Lancaster University compare with the subject at school? Is it much the same but a bit harder? The answer is “no, it’s really quite different”. The distinction is partly between being taught at school and learning at university. At school, much of the critical input to your education came from your geography teacher and a few textbooks. Here at Lancaster, the lecturer is a guide to the subject, describing its layout and giving you a framework for you to ‘flesh out’. That ‘fleshing out’ comes from the reading you do. The phrase “reading for a degree” describes it exactly. Also, what you read at university is different; it is less dogmatic (in the sense of telling you the right answer, what to think and how to see issues). It is more concerned with arguments, disputes and different ways of viewing the world. Geography at Lancaster University is about learning to handle uncertainty and debate, and contributing your own arguments. We use a wider range of teaching and assessment methods than many other subjects or universities, including: lectures, tutorials, seminars, practical classes, fieldwork and dissertations.

Our teaching staff and their areas of expertise:

- Prof. Philip Barker** B.Sc. (Hull), Ph.D. (Loughborough). Environmental change.
- Dr. Uli Beisel** DipPsych/Soc. (Bremen), M.A. (Lancaster), Ph.D. (Open University). Multispecies geographies, science and technology studies, health and development.
- Dr. Alan Blackburn** B.Sc. (Bristol), Ph.D. (Southampton). Environmental remote sensing.
- Dr. John Childs** Ph.D. (Manchester). Environmental Politics in sub-Saharan Africa, The Politics of Ethical Consumption.
- Prof. Nigel Clark** B.A., M.A., Ph.D. (Auck). Environmental change & society, social theory & nature.
- Dr. Rebecca Ellis** B.A. (LSE), M.Phil. (LSE), Ph.D. (LSE/St. Andrews). Anthropology of Science; Biodiversity; Amazonian Ethnography.
- Dr. Andrew Folkard** B.Sc. (Edinburgh), M.Sc., Ph.D. (Dundee). Environmental flows.
- Dr. James Fraser** B.Sc. (Swansea), M.S.c. (Wageningen), Ph.D. (Sussex). Environmental Anthropology & Geography; Farming Systems, Natural Resources & Development
- Dr. Mark Hounslow** B.Sc. (Aston), Ph.D. (Southampton). Environmental change.
- Dr. Will Medd** B.Sc. (Southampton), Ph.D. (Lancaster). Sustainable Water Management.
- Dr. Suzana Ilić** B.Sc. (Rijeka), Ph.D. (Plymouth). Coastal processes.
- Prof. Barbara Maher** B.Sc., Ph.D. (Liverpool). Environmental magnetism, climate and environmental change.
- Dr. Siobhan McGrath** M.A. (New School for Social Research), Ph.D. (University of Manchester). Forced Labour, Work & Employment, Global Production Networks
- Dr. Luke Parry** B.Sc. (Bristol), M.Sc., Ph.D. (UEA). Human Dimensions of Tropical Forests
- Dr. Saskia Vermeylen** Masters International Relations (Utrecht), Masters International and European Law (Brussels), M.B.A. (Nottingham), Ph.D. (Surrey). Law & Society, Ethnography, Indigenous Knowledge and Africa.
- Prof. Gordon Walker** B.A., Ph.D. (Leeds) Environment, risk and social justice.
- Dr. Nigel Watson** B.A. (Lampeter) M.A., Ph.D. (Waterloo, Ontario). Environmental management.
- Dr. Duncan Whyatt** B.Sc., Ph.D. (Hull). Geographical information systems.
- Dr. Peter Wynn** B.A. (Cambridge), Ph.D. (Sheffield). Glacial Processes and Environmental Change.

Geography Dissertations

During your final year you undertake an individual piece of research, the dissertation, that synthesises concepts and approaches from different research areas in order to address an important issue. With this type of cross-disciplinary expertise, you will have a wide range of career options, with employment opportunities available in organisations such as environmental consultants, local councils, central and European government, environmental non-governmental organisations and industry.

Support staff

A team of technical and administrative staff ensure the efficient running of the Department’s teaching and research activities. The support staff are friendly and approachable and always ready to help.

Postgraduate study in Geography at Lancaster

After your first degree, why not continue with more specialised studies in in Lancaster Environment Centre? Masters degrees include MA/MSc Environment and Development, MA/MSc Environment, Culture and Society, MSc Resource and Environmental Management. Those keen to pursue innovative research can do a Ph.D. within one of our high profile research groups.



So What Do Our Graduates Think?



Mike Stainsby (Geography Graduate 2012)
Intern at the World Glacier Monitoring Service, Switzerland.

"Studying at Lancaster has not only developed my geographical skills and breadth of knowledge, but has also provided me with numerous experiences that have helped me grow as an individual and so make me more employable. My undergraduate degree took me from the stunning glacial landscapes of southern Iceland and the Swiss Alps to the bustling metropolis that is New York City. BSc Geography is an intellectually challenging and rewarding course which undoubtedly paved the way for me to gain an internship with the World Glacier Monitoring Service, Switzerland. Lancaster Geography offers great facilities, opportunity for travel and an excellent standard of teaching. If offered, I would most certainly do it all over again!"



Daniel Sayle (Geography Graduate 2012)
Working Towards a PhD.

"Completing my Geography degree at Lancaster has been a great experience! The first year provided me with comprehensive knowledge in human and physical geography that really prepared me for the highlight of my degree that was studying abroad in Colorado. While there I worked for NASA and other world leading institutes and I got to ski in the Rocky Mountains almost every weekend. My final year has allowed me to study topics I enjoy in real depth and provided opportunities to do field work in northern Spain. Post-graduation, my degree has equipped me with the skills to gain a real edge in the job market which is as important as ever."



Helen Hollingworth (Geography Graduate 2011)
Northern PowerGrid, UK.

"What attracted me to geography at Lancaster was the wide range of opportunities on offer.

I was lucky enough to take part in a year abroad in Australia, which looked fantastic on my CV to potential employers. The wide range of modules on offer allowed me to tailor the course to what I enjoyed most and develop skills valued by employers including time management, independent working and some more specialist skills such as geographical information systems and working in labs.

I am now employed by Northern PowerGrid an electricity distribution company. My role includes liaising with landowners, the environment agency and local authorities to ensure that the lights are kept on. The skills I've learnt throughout my degree have played pivotal role in me obtaining employment with me using them on a daily basis."



Jemma Fells (Geography Graduate 2010)
Organic Tea Industry, India.

"My degree from Lancaster has equipped me with many skills, but mostly I feel it brought out my talents and passion for the subject. My passion for social and environmental issues was built upon with relevant knowledge and skills to give me confidence to use it. Since completing my degree I have been working at an organic and fair-trade tea estate in India, where a sustainable model for the future is being built. I feel privileged to be involved in projects like this, seeing what I studied happening in real life is really inspiring. The staff in the environment centre really helped me develop a keen sense of what I wanted to achieve with my degree. My dissertation especially has enabled me to talk to people in the areas that I am interested in working in."

Irma Rekic (Geography Graduate 2009)
National Health Service, UK.

"Studying Geography at Lancaster was a truly enriching experience and has given me a wide range of skills and a great amount of confidence. The department gave me support to overcome any difficulties I encountered and enabled me to fulfill my potential. The course gives you a lot of freedom and guidance is always available, particularly with your dissertation, so you can choose a subject you are really interested in."



Stewart Jordan (Geography Graduate 2009)
Graduate Flood Risk Scientist, Scottish Environmental Protection Agency.

"The last three years I have spent studying Geography at Lancaster University have undoubtedly helped me to attain the position of a 'Graduate Flood Risk Scientist' within the Scottish Environmental Protection Agency. The flexible module structure of the course allowed me to gain not only an excellent broad understanding of Geography as a whole, but also an advanced specialist understanding of the areas in which I was most interested via the choice of modules I undertook. Skills learnt and developed both in the classroom and field have proved to be invaluable both in the job role and the Masters course I was enlisted upon as part of my position. The unique mix of activities and opportunities offered by the University allowed me to make the most of the time I spent at Lancaster, both academically and socially."



Emily Pile (Geography Graduate 2009)
Accountant, Deloitte.

"The variety of course choices and the focus placed on innovative ways of learning attracted me to Lancaster University. My instincts proved correct as I've had a fantastic time! I was selected for the Deloitte summer scheme in my second year and as a result I have been offered a permanent position as a graduate trainee accountant. The range of skills gained from studying Geography was pivotal in securing my job. Of particular value were the research skills I gained combined with an ability to distil key ideas and present these to clients and colleagues in seminars and briefings."



Heather Dinsdale (Geography Graduate 2008)
HSBC Executive Management.

"I cannot emphasise enough how much I have enjoyed studying Geography at Lancaster University, from learning how to use GIS packages to going on a field trip to New York. During my penultimate year at Lancaster University I worked as a Summer Intern for HSBC in London, and was lucky enough to be selected for the Executive Management Trainee Graduate Scheme. I know that my three years at Lancaster University have given me the skills and abilities I need to make the most of this opportunity and I honestly believe that studying Geography at Lancaster University has allowed me to fulfil my true potential."





Careers



Irma Rekić (B.Sc.)

Past Student



Gemma Fells (B.Sc.)

Past Student

Organic Tea Industry,
India

Careers Preparation and Prospects

A degree in Geography provides students with a very wide range of transferable skills which are valuable for professional careers related to many aspects of the environment, business and public service. Examples of employment undertaken by some of our recent graduates include:

- **GIS Consultant**, Ordnance Survey
- **Britain From Above Cataloguer**, English Heritage
- **Teacher**, Chatteris, Hong Kong
- **Recycling Officer**, South Cambridgeshire District Council
- **Development Officer**, Wind Direct Ltd.

Geography graduates from Lancaster have an excellent employment record. Our most recent data show that, six months after leaving university, 80-85% of our Geography graduates were either in full-time employment, undertaking further study, or combining additional studies with part-time employment. Our recent graduates are employed by a diverse range of organisations, including the **Environment Agency and Scottish Environmental Protection Agency, Price Waterhouse Coopers, Deloitte, HSBC, Balfour Beatty Construction, Sainsbury's, the NHS and HM Revenue and Customs.**

At Lancaster, a great deal of emphasis is placed on developing employability skills throughout the Geography degree programme. This is achieved by:

- Encouraging all of our students to enrol for the Lancaster Award. This formally recognises and rewards voluntary work, work experience and participation in careers training programmes offered by the Centre for Employability, Enterprise and Careers (CEEC).
- Providing tutorials and workshops on careers planning and preparation as integral parts of each Geography degree programme.
- Enabling students to complete a module on 'Enterprise and the Environment' which provides additional skills and experience necessary to gain employment in the environment sector.
- Providing careers drop-in sessions with staff from CEEC every term, plus mentoring events to enable current students to receive practical advice from our former graduates.
- Giving students who are interested in a teaching career the option of taking part in a government recognised programme that enables them to teach Geography in a local school for one afternoon per week for a whole term.
- Ensuring students are kept fully informed of new employment opportunities and careers events held both on and off campus, via regular emailed careers bulletins.



Lancaster University Research to Industrial Solutions: You and the World Beyond...

Lancaster Geography is connecting university research to external environmental organisations and forging ahead in applying cutting edge research to some of the most pressing environmental issues around the World today. Here is how you, as an undergraduate studying at Lancaster could become involved.

Enterprise and Business Linkage with Geography:

The Enterprise and Business Partnerships unit within the Lancaster Environment centre specialises in building collaborations between university research and external environmental organisations. Geography researchers have direct links with many external companies, including agribusiness, food security, eco-innovation, climate change mitigation, biotechnology, and energy and renewable solutions. Many of these industries and opportunities are made available to our students as a part of their degree. Here is how you can become involved:

Studying Enterprise for the Environment:

Our second and third year undergraduate module 'Enterprise for the environment' aims to provide students with an opportunity to learn about the role of the environment as a driving force for business, innovation and commercialisation.

Do Your Dissertation as a Work Placement:

Our students all complete an original piece of research (dissertation) – as a part of their Geography degree. Through our Enterprise and Business Partnerships unit, there are opportunities for students to undertake this research as part of a work placement.

Subsistence Farming in Uganda:

Michelle Clark worked alongside 'Nile Teas (Uganda) Ltd' to assess the impacts of recent climate change in rural Uganda. The aim was to promote sustainable

production of organic crop Hibiscus Sabdariffa for the East African market, whilst improving food and income security through knowledge and diversification.

Marketing Sustainable Textiles:

This project, undertaken by Luci Duncalf, addressed market forces governing the use of sustainable textiles in the household made from eco-friendly products. Market-led research undertaken alongside Bamboo Textiles Ltd, identified barriers and motivations to eco-friendly product use and was finally fed into policy recommendations for the company.



Typical requirements for entry to our degree programmes:

Geography degrees

BSc Geography (UCAS code: F800)*, BA Geography (UCAS code: L700)* BA Human Geography (UCAS code: L720), BSc Physical Geography (UCAS code: F840) and BSc Environmental Change and Sustainable Development (UCAS code F755):

- A level grades **AAB**.
- Scottish Higher grades **ABBBB**
- International Baccalaureate **35pts**;
European Baccalaureate **82%**

BSc Physical Geography (Study Abroad) with a Year in Australia (UCAS code: F847); BSc/BA Geography (North America) UCAS code: F802/L701)*:

- A levels **AAA**
- Scottish Higher grades **AAABB**
- International Baccalaureate **36pts**;
European Baccalaureate **85%**

Joint degrees

BA Economics and Geography (UCAS code: LL71):

- A level grades **AAB** Requires Geography or a cognate subject.

BA French/German/Spanish Studies and Geography (UCAS codes: LR71, LR72, LR74):

- A level grades **AAB** Requires Geography or a cognate subject. Must include the modern language unless this is to be studied from beginners level.

* = Degrees requiring A level Geography

Note: For all degree programmes, we also require GCSE passes in English and Mathematics at grade C. Please also note that we do not accept General Studies for any of our degree programmes.

There is no preferred combination of subjects for students wishing to study degree level Geography, as geographical enquiry presents the opportunity to study across the spectrum of physical and social sciences. However, key qualifications are certainly deemed advantageous to specific areas of geographical enquiry. For Physical / environmental Geography, qualifications in Maths, Biology, Chemistry, Physics and Geology, will be helpful. For the Human Geography degrees, courses such as history, economics, sociology, development, law and Religious studies will all help to provide the portfolio of knowledge required to excel in a Geography degree. This list is of course not exclusive, but should you have any concerns regarding the suitability of your A-level subjects for studying Geography at Lancaster, please do not hesitate to contact us.

Applications

Applications for all of our undergraduate degree programmes must be made through the Universities and Colleges Admissions Service (UCAS), using the online service via: <http://www.ucas.ac.uk>

Mature and overseas applicants

We welcome applications from mature or overseas students or those offering relevant subjects such as BTEC, Diplomas or other awards. Your application will be considered individually on its merits and in relation to the University's guidance on equivalence to A levels.

Considering a gap year?

We strongly support the principle of students taking a gap year between school and university. We recently undertook a wide-ranging study of Geography students and their gap years which identified the enormous benefits of such activities but also highlighted the importance of planning, structuring and recording your activities during the year.

Tuition Fees and Financial Support

For all undergraduate degree programmes at Lancaster, the tuition fee for 2013 entry is £9000 per year for students from the UK and the European Union (different rates apply to Islands and Overseas students). Please see our University web pages for further information on the financial packages available to you:

<http://www.lancaster.ac.uk/study/undergraduate/fees-and-funding>

Details of 2014 fees will be posted on this web site as soon as they are available.

Bursaries and Scholarships

Lancaster University has an extensive programme of financial support and funding for students that consists of:

Bursaries for life, living and learning

All students from England, with a household income of more than £25,000 but less than £42,600, will be awarded a **Lancaster Bursary of £1,000** for each year of their studies. In addition, as part of the National Scholarship Programme, students from England with a household income of less than £25,000 will receive a **£1,000 Bursary a £1,000 Fee Waiver** and a **£1,000 Accommodation Discount** in the first year of study, plus a Lancaster Bursary of £1,000 in subsequent years.

Students from England eligible for a bursary package will also be awarded our Academic Scholarship and/or Access Scholarship if they meet the criteria detailed above.

For up-to-date details of tuition fees, financial support, further guidance and information, please look at the Lancaster University Undergraduate Fees & Finance web page at:

www.lancaster.ac.uk/study/undergraduate/fees-and-funding

Scholarships recognising academic talent

Our **Academic Scholarship** is designed to reward the hard work and natural ability of full-time UK students applying to study with us regardless of their household income. Students achieving: A*, A* & A in their A-level examinations (or equivalent academic qualifications), and who place Lancaster as their firm choice, will be awarded a **£2,000** Lancaster Scholarship during their first year of undergraduate studies.

Our **Access Scholarship** is to support students with household incomes of less than £42,600, who achieve excellent A level grades of A*, A, A, or the equivalent academic qualifications. They will be awarded a **£1,000** Access Scholarship for each year of their studies.

Lancaster University's priority is to support every student to make the most of their life and education. For students starting their study with us in 2014, over 600 each year will be entitled to bursaries and/or scholarships to help them with the cost of fees and/or living expenses.

Virtual Campus Tours



To take a virtual campus tour please visit: - <http://www.lancaster.ac.uk/campustour/index.htm>

Sports Centre: - <http://sportscentrelancaster.co.uk/>



Welcome from the **SLUGS**

(The Society of Lancaster University Geography Students)

The Society of Lancaster University Geography Students aims to enhance your experience and enjoyment of Geography.

We organise a diverse range of both academic and non-academic activities which provide our members with the opportunity to relax and enjoy themselves, while at the same time developing their interest in their subject.

SLUGS also provide opportunities to enhance staff-student interactions through the events which we organise.

Examples of previous events include paintballing, walks, formal meals and a programme of guest lectures. As a student of Geography, you are automatically enrolled in the society, which provides you with the opportunity to attend as many events as you wish.

We look forward to meeting and welcoming you to Geography and the SLUGS community!



Lancaster Life in the Eyes of Our Students





University Life in **Lancaster**

Lancaster is one of the top UK universities. It offers first class teaching and research; it is friendly and flexible, with a great social life. Personal supervision in departments and the collegiate system combine to provide students with the best possible opportunity to achieve their potential. Staff-student ratios are significantly better at Lancaster University than the national average and small group teaching is an important feature of our educational approach. The cost of University accommodation (and general living costs) at Lancaster is among the lowest in the country.

The University has over 12,000 students from more than 120 countries and over 2,500 staff. All our activities are based on a single campus. The University campus is three miles from Lancaster city centre and is like a small town, with its own Health Centre (including doctors' and dentists' surgeries and a pharmacy), shops, banks and a post office as well as restaurants, fast food outlets and bars. The Campus has excellent sporting facilities which include an eight lane 25 metre indoor swimming pool, badminton, squash and tennis courts, a floodlit outdoor pitch, a sauna and solarium, weight training and fitness rooms.

The social life of the university revolves around eight undergraduate and one postgraduate colleges, each with its own distinct identity. Every student and member of staff belongs to a college, and each student is allocated a personal tutor from his or her college. Each college has its own bar, common rooms and residences. Colleges are run by elected student committees and each college has a programme of social events including Christmas Dinners, shopping trips, visits to the Lake District and various nightclubs in the North West. Inter-college rivalry is reflected through a series of annual sporting events.

All students at Lancaster are automatically members of the Lancaster University Students' Union (LUSU).

The Union deals with welfare matters and represents students on University committees. The Union organises entertainment on campus and at its social centre and nightclub, The Sugar House, in the centre of the city. Over 60 clubs and societies are affiliated to LUSU which cater for sporting, leisure, political, outdoor, religious, cultural and educational pursuits. The Union also runs shops on the Bailrigg campus, selling stationery, gifts, non-prescription medication and second-hand books.

Accommodation

All residences have kitchen facilities for self-catering. Most college accommodation consists of single study bedrooms. All but a few of the rooms have en-suite bathrooms. A modern communications system throughout campus provides a telephone in every student room (including voicemail) with free cross-campus calls along with a connection point for the University's broadband computer network which delivers ultra-fast Internet access. The majority of first year undergraduates have a room on campus and over half of all undergraduates live in University-owned accommodation in Lancaster and the surrounding area.



Lancaster and the Local Area



Lancaster Castle and Priory

By night...

Favourite student pubs in Lancaster include: The Friary, Varsity, Fibber McGee's, Wetherspoons, The Water Witch, Keystones, Merchants, The Sun, Mood, and The Lounge. Favourite student clubs in Lancaster include: Toast, Liquid, Revolution and The Sugarhouse - the Student Union run club (packed every weekend). Lovers of theatre and the arts are well catered for in Lancaster. Professional performances are staged at the Dukes Playhouse, the Nuffield Theatre (on the University campus) and the Grand Theatre. Lancaster hosts several festivals throughout the year. 'Lifest' is one of the most popular, regularly attracting famous novelists and poets.



The Sugarhouse

Outdoor enthusiasts will find a range of superb locations for walking, climbing, yachting and rowing.

You can find out more about Lancaster and the local area on the University web site: www.lancaster.ac.uk/explore

By day...

Lancaster is a friendly, bustling city which has all the amenities of a large city without having lost its charm and character. Much in Lancaster is geared to students' needs as it is very much a university town.

You will find all of the major high street retailers plus a number of independent specialist shops catering to the needs of students. The city can be reached in ten minutes by shuttle buses that run every five minutes from the university.

A short walk eastward from the University campus finds you in the Forest of Bowland Area of Outstanding Natural Beauty. The central part of Bowland is dominated by heather moorland which covers the wide expanses of sweeping fells. This contrasts with the verdant lowland landscapes around the periphery and the wooded valleys of the rivers Ribble, Hodder and Wyre. This and the easy access to local coastal environments, the National Parks of the Lake District and Yorkshire Dales means Lancaster is within reach of prime fieldwork sites for our physical geographers.



Market Street, Lancaster

Recent Updates From Some of Our Past Students

Hello,

I just thought I'd let you know how I'm getting on since completing my degree at Lancaster.

After graduating I gained employment at JARIC - The National Imagery Exploitation Centre in Cambridgeshire. I'm pretty sure it was my BSc in Physical Geography that got me the job, especially my interest in GIS and remote sensing! Since starting I have been trained in all manner of remote sensing and GIS techniques, building on the knowledge gained at University. I feel really lucky to have a job that I find so interesting and genuinely enjoy, feeling like I'm making a real difference.

A couple of months ago I got promoted and am now working for NATO. There are about 26 different nationalities here so it's a certainly a diverse workforce. I get to travel quite a bit which is always good, a week in Rome next month for some training and hopefully off to Kabul next summer....!

That's about it really, I hope it was of interest and I would thoroughly recommend this line of work to any of your students. So, thanks again for keeping me going in that final year of Uni, I certainly wouldn't have such a rewarding career ahead of me without my degree!

Sincerely

Matt

Hello,

I thought I would drop you a line and tell you I have moved jobs, countries and continents!

I was offered a really good job in Australia, in Melbourne so I took the plunge and arrived here three weeks ago. I had a week off to recover from jetlag and then straight into work.

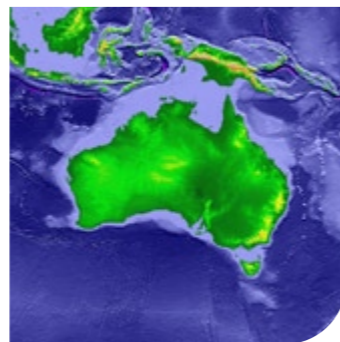
My role here involves doing a lot of 1D and 2D hydraulic modeling for local authorities, water companies and developers. The software used to run the hydraulic models is very different to the UK, but today my first attempt at building a flood routing model has worked, and even better I have sensible looking hydrographs!

I'm enjoying the job so far. The people here are very nice and welcoming and the work is interesting.

Hope you are well,

Gemma

Gemma Costin
Senior Hydraulic Engineer



Visiting the University

Lancaster is very well served by road, rail and air networks (see map). Annual Visit Days take place in August and September of each year for anyone thinking of applying to Lancaster. These are an excellent opportunity for students considering Higher Education entry to visit Lancaster and find out about degree programmes, talk to Geography staff and go on a campus tour. Alternatively, Campus Visits take place on the first and third Wednesday of every month, apart from August. There are tours of the University and its facilities and you will see student accommodation in a College. If you want to attend an annual visit day or would like to join a conducted tour, please visit the University's website to book a place or e-mail:- visitus@lancaster.ac.uk Telephone enquiries can be made to UK Student Recruitment and Outreach Team on:- **01524 593724**.

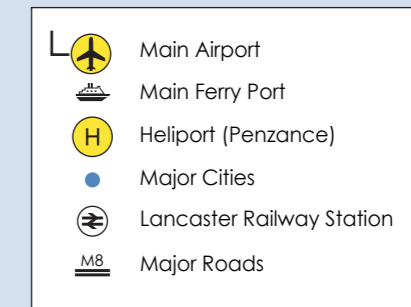
If you would like to visit the University informally, you are welcome to do so at any time. You do not have to advise us of your visit; the campus is like a small town and you are welcome to use the shops, Sports Centre, bars and restaurants and to visit the Library. Please contact the Geography admissions secretary for a map of the University campus.

Visiting Geography at Lancaster

We have open days for potential Lancaster students - several Open Days are held between December and March. The open days are designed to allow you to get a taste of being an undergraduate in Geography at Lancaster. You will be able to talk to Admissions and subject tutors, participate in some geography activities, join a conducted tour of the campus, and find out about the first-rate facilities at Lancaster. Parents are welcome to come to the Open Day. While here, parents can attend a special question and answer session to discuss issues such as accommodation, finance, life on campus, and are taken on their own campus tour.

Approximate Travel Times (By Train)

Lancaster — London	2.5 hours
Lancaster — Liverpool	1.5 hours
Lancaster — Manchester	1 hour



Notes



Image credits:

The photographs in this prospectus were taken during Geography fieldwork - thanks to our students and staff who took these photographs and appear in them. Additional photos and images appear courtesy of: Lancaster University Photographic Unit (p.1, top); NASA (p.2, Hurricane Isabel, p.7, and inside back cover); Paul Williams (p.3, top right interior photographs, p.33, top and bottom photographs).

Further Information and Contacts

Further information about the University in general, accommodation or the city of Lancaster may be found in the University's Undergraduate Prospectus. Paper copies are available via:

www.lancaster.ac.uk/prospectus

The Lancaster University web site:

www.lancaster.ac.uk

Contacting the Geography Admissions Staff:

For all degree programmes offered in Geography contact:

The Geography Undergraduate Admissions Secretary

Tel: 01524 510249

Fax: 01524 510269

E-mail: lec.ug@lancaster.ac.uk

Postal address:

Lancaster Environment Centre

Lancaster University

Farrer Avenue

Lancaster

LA1 4YQ

The Geography web site:

www.lec.lancs.ac.uk/undergraduate/geography

Disclaimer

The information provided in this brochure is correct at the time of publication (June 2013) but this may be subject to change as we constantly review and improve our degree programmes. This brochure does not form part of any contract between any person and the University of Lancaster.



Geography Undergraduate Prospectus

Lancaster Environment Centre




Printed on 100% recycled paper, using vegetable based inks