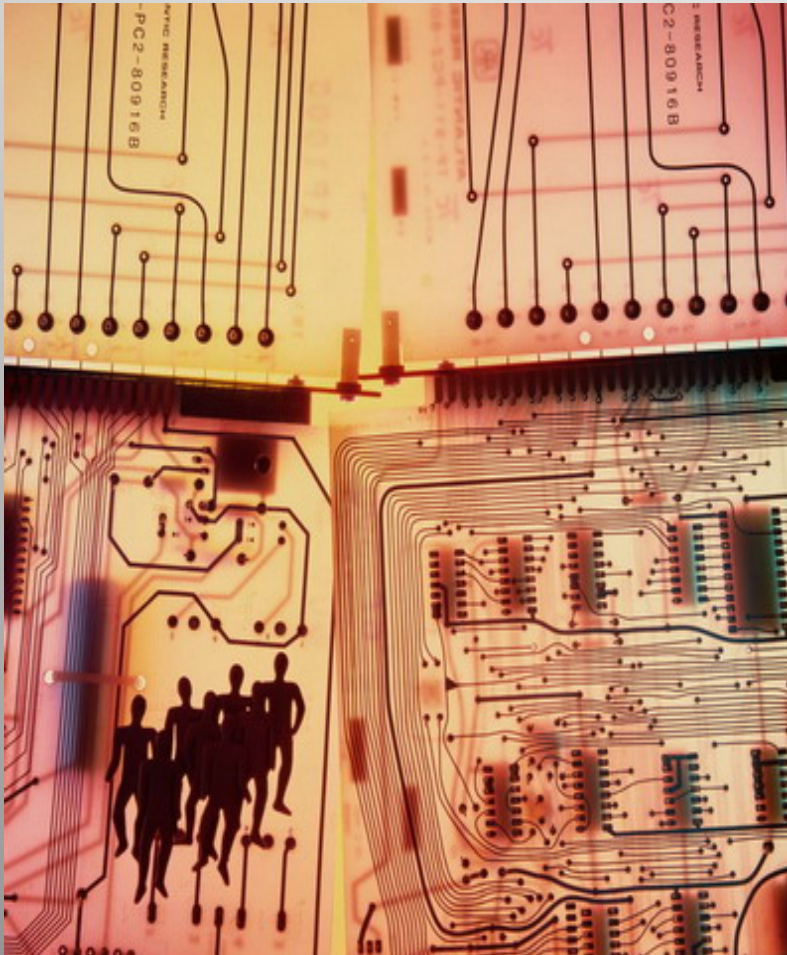




Learning Sustainability a sociomaterial perspective

**Tara Fenwick,
University of Stirling**

How we are (already) interconnected - *with social and material intensities*



***responsibility - ethical
action***

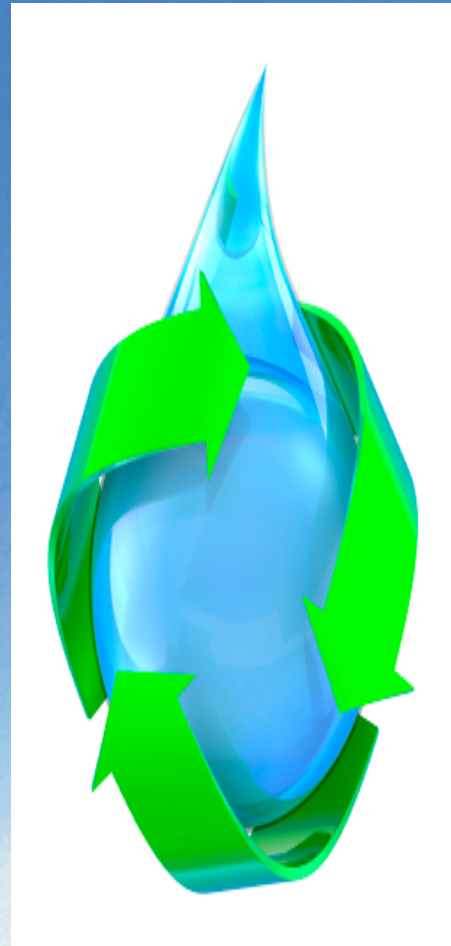


ecological sustainability



interconnecting

renewing



promoting local well-being



Corporate Social Responsibility (CSR)

“treating the stakeholders of the firm ethically or in a responsible manner” (Hopkins, 2003)

“triple bottom line”

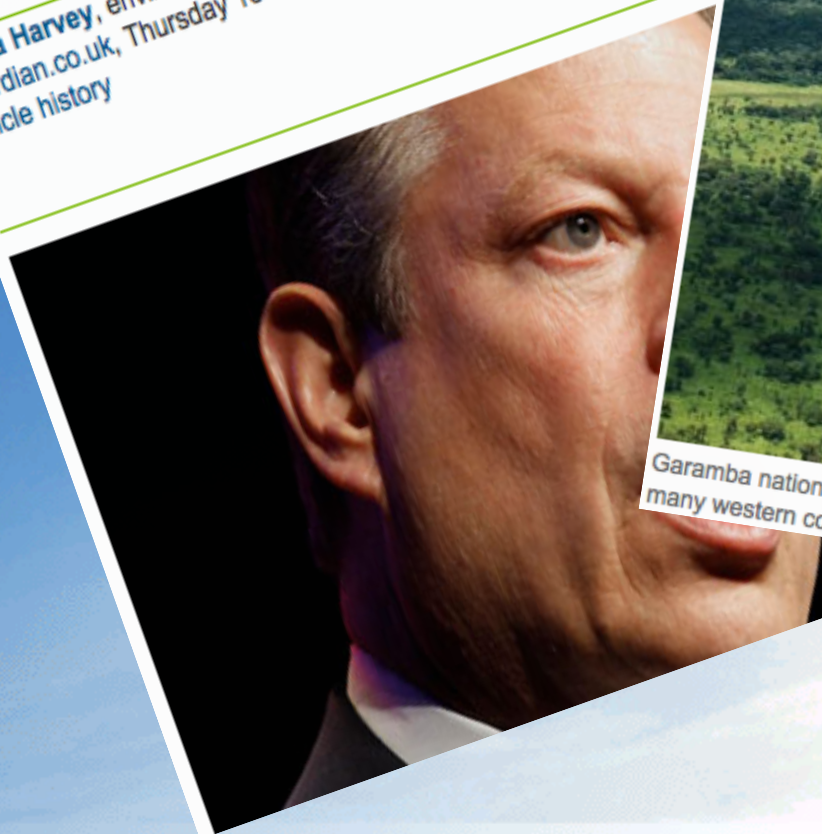
**people - employees, community, etc
natural environment
investors**



Al Gore: How to modify capitalism so it takes a greener long view

Firms should focus on long term sustainable investments, say founders of Generation Investment Management

Fiona Harvey, environment correspondent
guardian.co.uk, Thursday 16 February 2012 15.19 GMT
[Article history](#)



The rhetoric of corporate social responsibility outweighs the reality

CSR-driven initiatives are simply not proportionate to the value that multinational companies extract from Africa and Asia



Garamba national park in Congo, a country of abundant natural resources from which many western countries have benefited. Photograph: Xan Rice for the Guardian



- **failed global agreements**
- **production still moves to non-regulated zones**
- **costs judged unjustifiable**
- **low stakeholder support**
- **“green” rhetoric for profit**
- **ideals not translated to everyday practices**

Prescribed from the top

Little attention to learning

Lacks a material analysis

A sociomaterial approach

..... a disparate set of tools, sensibilities and methods of analysis that treat everything in the social and natural worlds as a continuously generated effect of the webs of relations within which they are located. It assumes that nothing has reality or form outside the enactment of those relations.

(Law, 2007)



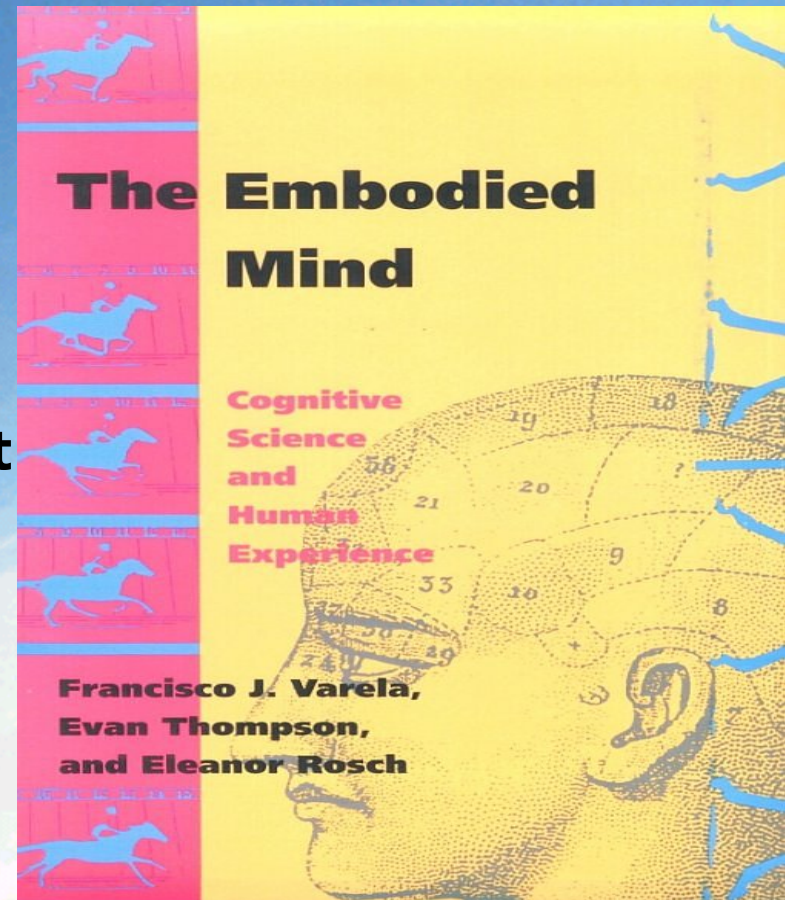
*Social and material
configurations
Materials are powerful
Capacity is distributed*



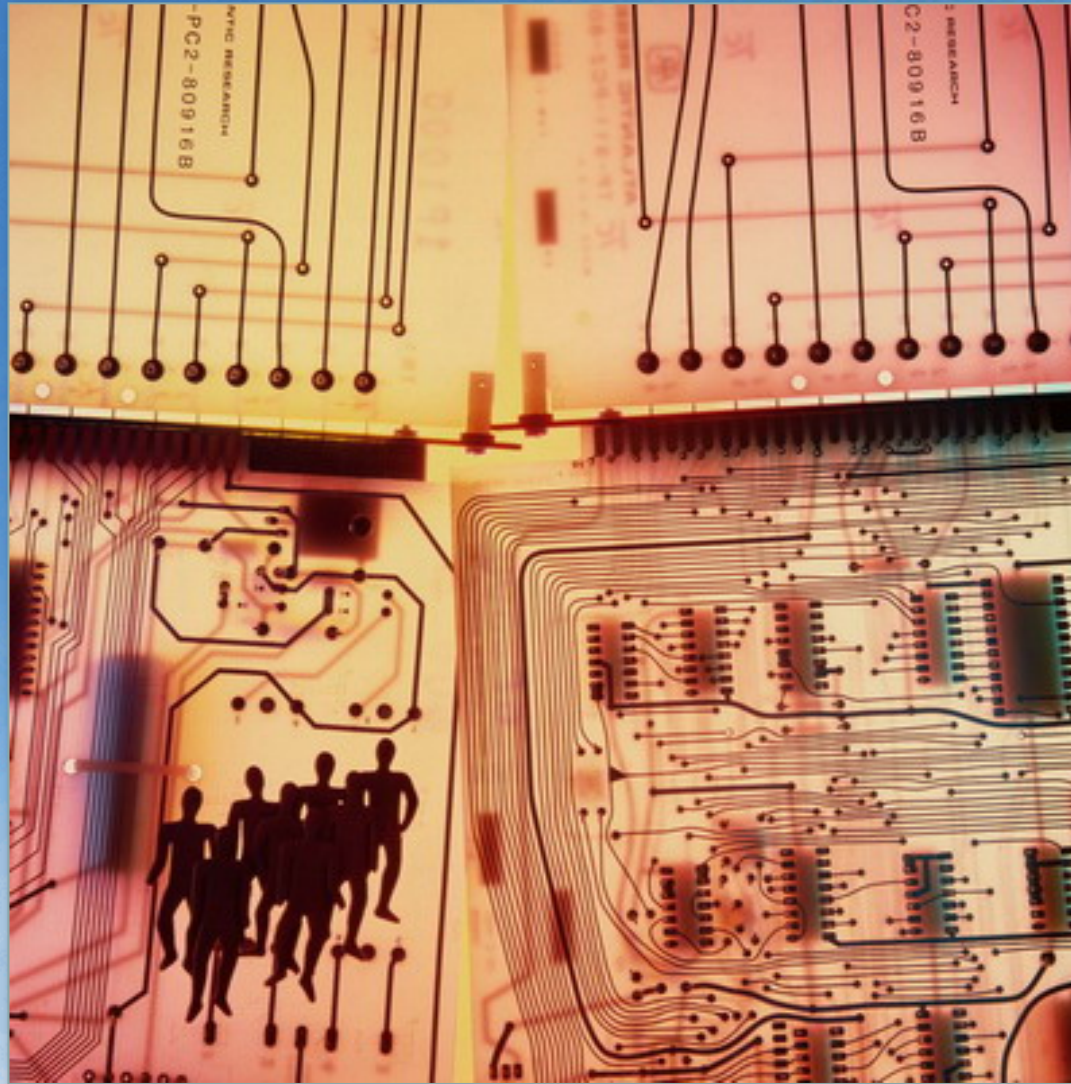
'Learning consists not of representations but of embodied action'

**Knowledge, identities and environment
EMERGE in**

'our history of structural coupling' and 'the alternative microworlds that are activated in every situation'



Learning as translating *(actor network theory view)*



Learning as emerging (*complexity theory view*)

Emergence

arises through

Dynamic nonlinear interaction among parts

co-specify each other
create new possibilities
self-organizing
self-similar

Unpredictable directions





Sociomaterial perspectives of practice and learning

Emerging
Complexity theory view

Expanding
Cultural-historical activity theory

Translating
Actor-network theory

Enacting
Spatialities view

Sociomaterial questions

- How do people, tools, technologies, texts become combined in particular practices?
(How and when do they get stabilised into 'blackboxes'?)
- What happens when they are hooked up with other assemblages?
- How do human and nonhuman materials change as they intra-connect?
- What kinds of forces, practices and knowledges emerge?
- Who/ what gets excluded?



Indigenous knowledge



A close-up photograph of a human hand, palm up, holding a glowing, multi-faceted orb. The orb has a bright white center that fades into a warm orange and red glow. The background is a soft, out-of-focus blue and white, suggesting a sky or water. The entire image is framed by a blue border.

reciprocity

respect

reverence

responsibility

What they all emphasize

Learning lives as embodied action

Focus on practices - who, what, how, why

Focus on what is in-between, the relations

Examine systems, not just individuals

Continual complexity - knowledge and experience are undecidable

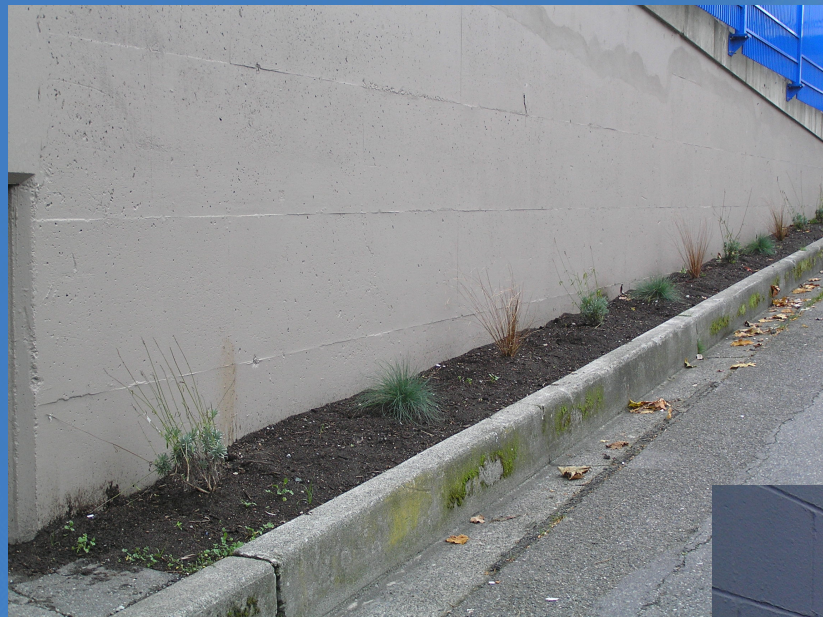
**Learning
sustainability:
*Eclipse Awards
International***

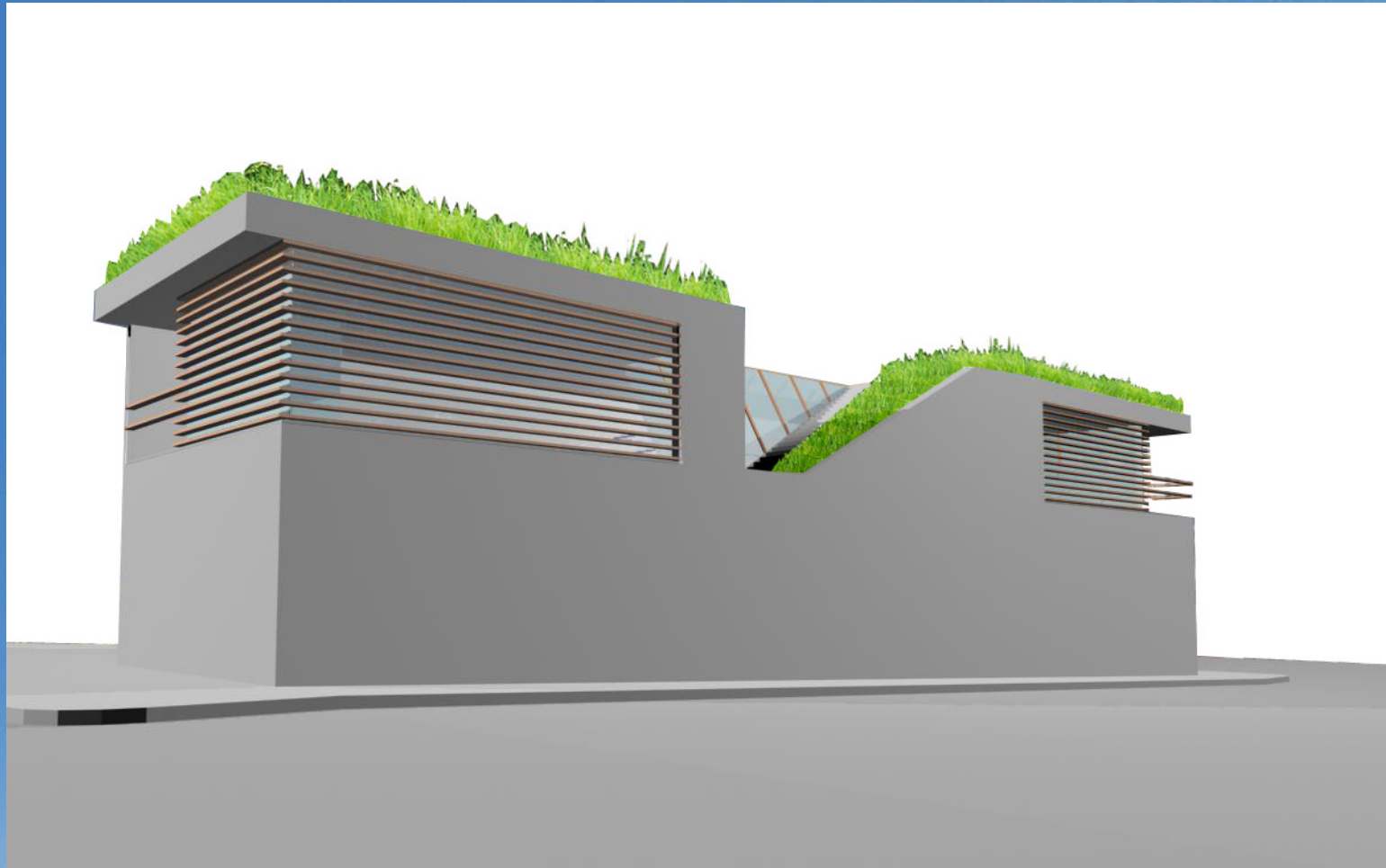
**in Vancouver's
downtown lower
east side**













Firefox File Edit View History Delicious Bookmarks Tools Window Help
 Crystal Awards | Green Awards | Glass Recognition Awards | Eclipse Awards
 http://www.eclipseawards.com/ eclipse vancouver
 Guardian BBC NEWS Jazz24 Staff-Stir Charles Rennie Mack... STORRE: Home
 Crystal Awards | Green Awards | ...

 Your Eclipse Awards Account Your Shopping Cart \$0.00 (0 items) Select Currency Currently USD SEARCH:

PRODUCTS ABOUT US SERVICES OFFERED HOW TO ORDER TIPS AND ADVICE COMMON QUESTIONS CONTACT



ECLIPSE AWARDS - THE FIRST CARBON NEUTRAL AWARDS SUPPLIER

Eclipse Awards is committed to corporate social responsibility and operating in a manner that is respectful of the environment, our communities, and our stakeholders. We are strongly committed to reducing our environmental footprint, having set an aggressive five year reduction target and offsetting our remaining carbon, making us the first carbon neutral awards supplier.

[VIEW OUR CSR COMMITMENTS »](#)

LEARN MORE ABOUT US BY SELECTING A HEADING: IMPACTFUL AWARDS FOR YOUR ORGANIZATION VIEW THE BENEFITS OF CHOOSING ECLIPSE CORPORATE SOCIAL RESPONSIBILITY

Crystal Awards, Glass Awards & Green Awards
 Eclipse Awards personalizes beautiful Crystal Awards, Glass Awards and Green Awards for all

About Eclipse Awards
 Eclipse Awards is an experienced, world-class supplier of crystal awards, green awards and glass recognition awards. Eclipse Awards is a full

Clients & Testimonials
 Eclipse Awards is committed to excellence, sustainability & community. Find out why many of the world's largest and most

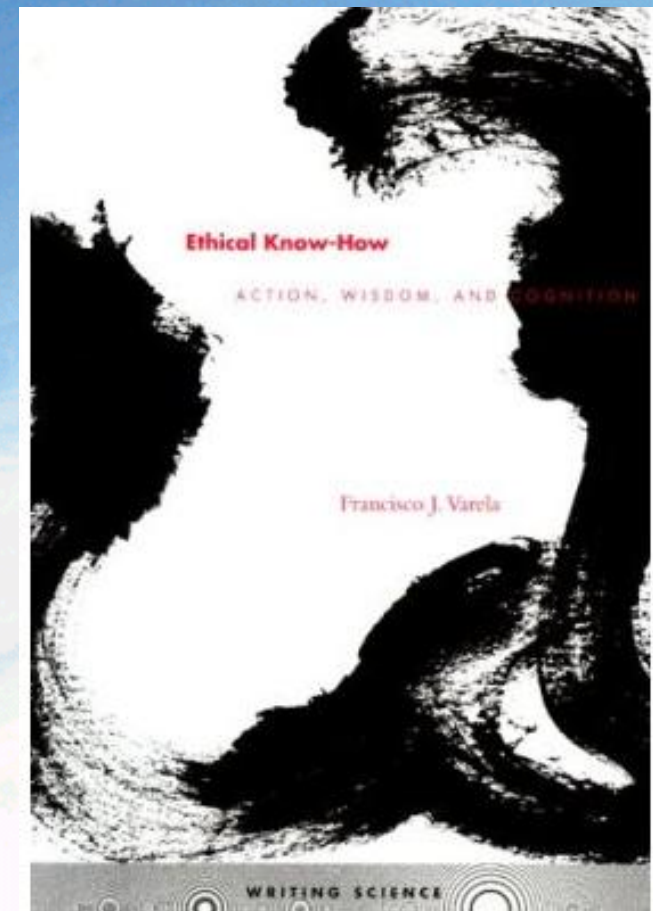


Francisco J. Varela (1946-2001)

Ethical know-how - “appropriate responsiveness in the *here and now*”

“spontaneous compassion”

ethical action . . . “the daily enactments that comprise our traces within the world”



Human learning for sustainability? . . .



Together understanding how practices are assembled, how they gather power (or not) . . . and where are the possibilities for change

Capacity for uncertainty

Acting in undecidability

Participating in emergence

Improvising with others – human, nonhuman

Highlighting disturbances, paradoxes

Noticing one's effects on what is emerging

Attuning to emerging ideas, action possibilities

Engaging with difference - multiple worlds

