

# Steps

The Lancaster Magazine 2015

**DEFYING DEMENTIA**

---

**ALUMNI IN POLITICS**

---

**ANNIVERSARY ROUND-UP**

---

**UNIVERSITY NEWS**

[WWW.LANCASTER.AC.UK/ALUMNI](http://WWW.LANCASTER.AC.UK/ALUMNI)

Lancaster  
University 

## WELCOME

As always I'd like to open with best wishes from Lancaster University. As you will know, we have just come to the end of an exciting year of celebrations for our 50th anniversary.



I was delighted to meet many alumni and friends in various parts of the globe, and I was reminded what an important part of our community you remain. The warmth and pride that our alumni feel for Lancaster really shone through and was quite humbling.

Looking at the 50th in numbers for a moment, we held close to a hundred events in twenty-six countries, interacting with an audience of nearly 18,000 people who consisted of alumni, friends and members of the general public. We learned a great deal about what you want in terms of contact with your University and we also realised that we need to keep the momentum of engagement going. Whether you are supporters, volunteers, or advocates for Lancaster, you are a critical part of our success. We celebrate and take pride in your achievements; we hope you feel the same about ours.

So, we may be catching our breath from a busy 12 months, but we continue to plan for the future, dedicating ourselves to strengthening our ties with our growing alumni community. Please also share your news with us; and remember we will always be delighted to see you back at Bailrigg.

**Professor Mark E. Smith**  
Vice-Chancellor

The articles printed here, to the best of our knowledge, were correct at the time of going to press. We cannot guarantee that all articles submitted have been printed and we reserve the right to edit material where necessary. Furthermore, the views expressed in this magazine are not necessarily those of Lancaster University or the Editor. Steps is available to view online at [www.lancaster.ac.uk/steps](http://www.lancaster.ac.uk/steps) as a PDF and a Word document. If you require this magazine in another format, please contact the Alumni & Development Office.

## CONTENTS

### 03 DEFYING DEMENTIA

Biomedical Researchers have been trialling crowdfunding to develop an innovative drug to stop early-stage Alzheimer's Disease.



### 05 ALUMNITALK

Gary and Anne Skinner celebrate 40 years of marriage at the Chaplaincy Centre and a round-up of alumni weddings and books.



### 07 LET'S TALK POLITICS

Interviews and information about a selection of new and established alumni politicians.

### 09 OUR VOLUNTEERS

Meet our alumni volunteers across the globe and find your local group.



### 11 50TH ANNIVERSARY

A round-up of our celebrations in Lancaster, London and across the world.

### 13 ANTISOCIAL NETWORK

Dr Claire Hardaker talks about a cutting-edge tool that could help to pinpoint threats on social networks.



### 15 UNIVERSITY NEWS

Updates from around the University and forthcoming events for your diary.

### 17 SAM WORKS HIS MAGIC

For graduate, Sam Fitton, Lancaster proved to be the perfect launch pad for his career as a professional award-winning magician.



### 19 YOUR LANCASTER

A guide to some of the benefits and services available to all Lancaster Alumni.



### 21 HONORARY DEGREES AND ALUMNI AWARDS

Awards presented during the 2014 Graduation Ceremonies.

**Published by:**  
Alumni, Development & Events Office  
E: [alumni@lancaster.ac.uk](mailto:alumni@lancaster.ac.uk)  
Additional Contributor: Rachel Pugh  
Produced by Fusiondesign.co.uk

**Front cover photo:**  
Janet Regan, Community Activities Day  
September 2014.



## Alan Milburn takes on the top role

The third Chancellor for Lancaster was officially 'installed' at a special ceremony on campus on 4 March 2015. Lancaster graduate Alan Milburn succeeds mountaineer Sir Chris Bonington, who was also at the event.

The Installation Ceremony in the Great Hall saw Vice-Chancellor Professor Mark E. Smith make the official appointment of the University's new ceremonial head in front of an audience of invited guests. After a lunch for 190 guests to mark the occasion, the newly appointed Chancellor opened the University's new Engineering Building and later attended an afternoon tea to meet University staff before giving an evening public lecture at The Dukes in Lancaster.

Mr Milburn, the Labour MP for Darlington (1992 to 2010), served within the UK Government as Chief Secretary to the Treasury, Secretary of State for Health (1999 and 2003) and as Chancellor of the Duchy of Lancaster, before his resignation from party politics in 2010. He is now the Chair of the Social Mobility and Child Poverty Commission and runs his own consultancy, advising governments and corporations worldwide. He is also involved in a variety of charitable projects.

He credits the skills he learned at Lancaster, where he graduated in History in 1979, as a foundation for the whole of his working life and career. He was later awarded an honorary degree in 2000.

Speaking at his installation Mr Milburn, a former Pendle College student, said he was honoured to accept the role of Chancellor. He said: "From its humble beginnings in 1964, Lancaster has gone on to have a profound impact not just on this lovely city and the wider region but across our country and far beyond."

Mr Milburn is Lancaster's third Chancellor - the founding Chancellor was HRH Princess Alexandra who served from 1964 - 2004 and was one of the longest serving university chancellors in the UK. Sir Chris Bonington was Chancellor of Lancaster University for a decade from 2005 and continues his involvement with the University in the new role of Chancellor's Ambassador.

**BIOMEDICAL RESEARCHERS AT LANCASTER UNIVERSITY HAVE BEEN TRIALLING CROWDFUNDING TO UNLOCK SOME OF THE MONEY THEY NEED TO CONTINUE THE DEVELOPMENT OF AN INNOVATIVE DRUG WITH THE POTENTIAL TO STOP EARLY-STAGE ALZHEIMER'S DISEASE IN ITS TRACKS.**

# Defying Dementia

The team from the Division of Biomedical and Life Sciences, led by Professor David Allsop, has taken the unusual step of launching a crowdfunding appeal to raise some of the money to do pre-clinical human studies on this drug (R1-OR2-TAT) developed at Lancaster, because of their conviction that it offers a way of stopping the progression of Alzheimer's.

Professor Allsop and his team have taken a different approach to tackling the disease from that taken by developers of existing and failed Alzheimer's drugs. Scientific trials have produced encouraging results, but the drug needs to undergo pre-clinical development to have any hope of being taken up by a pharmaceutical company and developed for widespread treatment of dementia.

The project called 'Defying Dementia' addresses a problem they call the 'valley of death', which is the gap between research funding and commercial development. It is a particular issue in drug discovery. The campaign began after Dr Gavin Smith in Lancaster University's Intellectual Property office won a £40,000 prize in a Patent Office competition for his idea of crowdfunding patent pending technologies. Dr Penny Foulds has used the prize to develop the 'Defying Dementia' crowdfunding project at Lancaster.

"The aim of our team is to progress our candidate drugs into clinical use against neuro-degenerative diseases," says Professor Allsop. "Crowdfunding will not raise all the money we need - but it will help, and the associated publicity campaign will also gain us a good profile. It is unusual to have developed a drug with such potential in a university academic laboratory - it normally happens in a pharmaceutical environment."



The Lancaster team has been working for the past eight years, on a substance called beta-amyloid ("A $\beta$ ") which is found in clumps and fibres in the plaques formed in the brain in Alzheimer's. R1-OR2-TAT prevents the clumping of A $\beta$  and blocks the toxic effects of A $\beta$  on nerve cells. The researchers have also made it possible for R1-OR2-TAT to cross the blood-brain barrier.

Says Allsop: "We are now keen to carry out drug distribution and toxicity studies before we decide if our drug is suitable for entry into human clinical trials. This is why we are currently fundraising."

During the 'Defying Dementia' campaign, the University has announced a deal with MAC Clinical Research, a North West company that has agreed to take the candidate drug forward into phase 1 clinical trials. These are the first tests on human volunteers and a vital step towards eventual clinical use.

R1-OR2-TAT extends the hope of a drug which could be administered to people suffering from Mild Cognitive Impairment, identified using memory tests as well as spinal fluid biomarkers and brain scanning techniques, before it develops into Alzheimer's, to stop the progression of the condition.



**The aim of our team is to progress our candidate drugs into clinical use against neuro-degenerative diseases**

PROFESSOR DAVID ALLSOP



Previous unsuccessful therapeutic approaches to Alzheimer's have included trying to create a vaccine and also trying to prevent the formation of A $\beta$  in the first place. Alzheimer's is a progressive disease causing dementia, which affects more than 520,000 people in the UK. At the moment there is no cure. The growing number of elderly people increases the pressure to find a way of treating or preventing the disease.

Professor Allsop - whose first degree was in Biology, followed by a PhD in Biochemistry - has been working to find a cure for Alzheimer's for 30 years, inspired by his grandfather's experience of the disease. He developed a keen interest in how it is initiated and how it develops and progresses in the brain. The first couple of decades of his career were spent trying to develop an understanding of how the disease affects the brain.

"I set out to find a drug to combat the disease," says Allsop, "but we did not even know what the fundamental brain mechanisms were at first. Only after they were discovered did the idea of finding a drug begin to look realistic."

"It is a slow and painstaking process to develop an effective drug, but I would like the chance to make it happen for Alzheimer's."

The Alzheimer's Society has contributed £150,000 to Lancaster University's development of R1-OR2-TAT. You can see how much crowdfunding has been raised by visiting our JustGiving page. For details of this and other ways to donate to Defying Dementia visit [www.lancaster.ac.uk/defyingdementia](http://www.lancaster.ac.uk/defyingdementia). The website also contains short videos about the research.



**12%**

Dementia affects 12% of people over the age of 65, rising to 46% of those over 80.



**£26 BILLION**

The financial cost of dementia to the UK is £26 billion per annum.



**36 MILLION**

In 2010 there were 36 million cases of Alzheimer's disease reported worldwide.

# Alumni Talk

## CELEBRATING 40 YEARS AT THE CHAPLAINCY CENTRE!

Gary and Ann Skinner (née Swain) were the first couple to use the chaplaincy chapel for the solemnisation of a marriage on the 8th February 1975 and returned this year for a special ceremony to celebrate their 40 years.

Both were biology students - Gary was in his last year of PhD study and Ann was in her last year of her BSc. They obtained a special licence to use the Galgate register to license the centre for the wedding and Paul Warren officiated at the marriage. The couple returned in 2015 with their three children and families including the three grandchildren. Their bridesmaids were represented by sister-in-law Prim and best man Graham also returned for the celebration. After the ceremony the party recreated the reception at 'Revolution' in Lancaster which, in 1975, was The Alexandra Hotel. They have promised to return in ten years time for their Golden celebrations.



## WEDDINGS

- JON OSGERBY**, Business Studies, 2009, Lonsdale married **CLAIRE REDDY**, Business Studies, 2009, Fylde
- BEN WELLS**, English, 2010 Furness married **ANNE RATHBONE**, Psychology, 2008, Furness
- PAUL CARROLL**, MEng Hons Computer Systems Engineering, 2003, Pendle married **HELEN SLATER**, Psychology, 2006, Grizedale
- MARTIN DUELL**, Maths, 2009, Fylde married **HELEN LINFORD**, Religious Studies, 2009, Furness
- SAM CADAMY**, Criminology & Sociology, 2008, Bowland married **SARAH COSGROVE**, Psychology, 2008, Bowland
- JONATHAN CROFT**, International Relations and French, 2008, County married **ALEXIA GOUTTEBROZE**, MA European Institutions and Policymaking, 2009, Graduate
- JONNY MORGAN**, Law, 2009, County married **JENNIFER LYON**, History and English Language, 2009, Fylde
- MARK BUTTERWORTH**, Maths, 2011, Furness married **CHARLOTTE POOL**, Biomedical Studies, 2011, Furness
- DANIEL OWENS**, Politics and International Relations, 2010, Furness married **KATY WILSON**, English Literature and Linguistics, 2010, County
- KRIS HILTON**, Geography, 2008, Lonsdale married **RACHEL WILKINSON**, Geography, 2008, Lonsdale



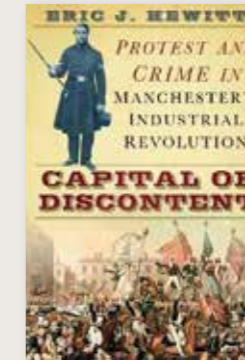
## ALUMNI IN PRINT



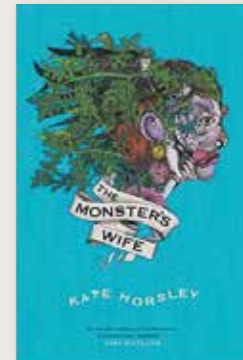
**CATRIONA CHILD**  
MA Creative Writing, 2010 - 'Swim Until You Can't See Land'



**J.S. COLLYER**, English Literature, Creative Writing and Practice, 2006, Cartmel - 'Zero: An Orbit Novel'



**ERIC HEWITT**, Politics and History, 1976, Lonsdale/County - 'The Capital of Discontent: Protest and Crime in Manchester's Industrial Revolution'



**KATE HORSLEY**  
MA Creative Writing, 2007, Graduate - 'The Monster's Wife'



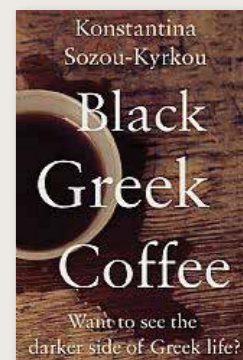
**RICHARD HUGGINS**  
MA Systems Management, 1984, History, 1982, Lonsdale - 'A Hated Man: A Rafe Wellesley Story'



**J.P. KUEHLWEIN**  
PG Dip Business Analysis, 1991, Graduate - 'Rethinking Prestige Branding: Secrets of the Ueber-Brands'



**LIL OSBORN** MA Women & Religion, 1993, BA Arabic & Islamic Studies, 1978, Furness - 'Religion & Relevance, the Baha'i Faith in Britain 1899-1930'



**KONSTANTINA SOZOU-KYRKOU**, MA Creative Writing, 2012 - 'Black Greek Coffee'



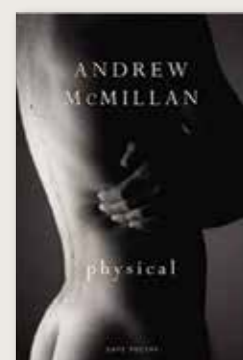
**MARC STIGTER** PhD Management Learning, 2011 & Professor Cary Cooper (Distinguished Professor Lancaster University) - 'Solving the Strategy Delusion: Mobilizing People and Realizing Distinctive Strategies'



**SIMON SYLVESTER**, English Literature, 2003, Pendle - 'The Visitors' (Shortlisted for the Guardian's infamous 'Not the Booker' prize)



**DAVID WILDE**, 1980, Furness - 'The Life and Times of Commander E.C. "Zeke", Cortez, USNR: Not Just Scuttlebutt'



**ANDREW MCMILLAN**, Creative Writing, 2010, Lonsdale - 'Physical' (Poetry Collection)

# ALUMNI IN POLITICS

FOLLOWING THE ELECTION WE NOW HAVE NEW ALUMNI WORKING AT WESTMINSTER. HERE'S A SELECTION OF ESTABLISHED POLITICIANS AND NEW PLAYERS.



**ALAN CAMPBELL** (Politics, 1978, Furness) has been the longstanding Labour MP for Tynemouth since 1997 and was re-elected in 2015 with 48% share of the votes.



**DR MATTHEW OFFORD** (MA Environment, Culture and Society, 2000, Graduate) has been the Tory MP for Hendon since 2010 and retained his seat in the recent election taking 49% of the votes for his constituency.



**CAT SMITH** (Gender & Sociology, 2006, Cartmel) is the new Labour MP for Lancaster and Fleetwood in a gain from the Conservative Party and won by 1265 votes.



**HOLLY LYNCH** (History and Politics, 2008, Cartmel) is the new Labour MP for Halifax with a majority of 428 votes over the Conservatives in the recent election.

There is no doubt that without the education I received at Lancaster, I would not be doing what I am now.

**SIMON DANCZUK**

**GRADUATED:** 1992  
**SUBJECT:** SOCIOLOGY  
**COLLEGE:** CARTMEL  
**CURRENT POSITION:** LABOUR MP FOR ROCHDALE



**The main reason Simon Danczuk went to university, after seven years working in industry, was to challenge himself to fulfil his academic potential.**

The 23-year-old union activist then discovered a whole world of scholarship and practical knowledge that equipped him for a political life he had only dreamt about since the age of 13.

Now re-elected as Labour MP for Rochdale, he is a dedicated campaigner against child abuse.

"There is no doubt that without the education I received at Lancaster, I would not be doing what I am now".

Coming from a family with low educational aspirations, he left school at 16 with one 'O' level and went straight into a factory and then became a labourer with ICI in Darwen. His trigger to catch up on his missed education at night school in order to apply for Lancaster,

was bumping into a former school teacher, who said she had always thought he had the calibre to make it to university.

He knew already that he wanted to change society and had been involved in the GMB union. At Lancaster he studied Economics, Politics and Sociology.

He treated university as a job - but one that he loved. Every day he commuted from Blackburn and at night he worked in the bar of the ICI club, Darwen to keep his financial head above water.

In sociology lecturer Roger Penn, he found a like-minded individual who he went on to collaborate with on the skills agenda. In other parts of the course he was drawn to methods allowing him to analyse data and to ask questions more effectively - all of which has stood him in good stead for his political career.

In his spare time he was involved in Labour politics in Darwen. He stood as local Labour councillor for the first time in his second year

at Lancaster and finally managed to win the seat just after his finals.

Upon leaving university, Danczuk undertook sociological research with Roger Penn in Rochdale, which gave him invaluable insight into his future parliamentary constituency. He went on to co-found Vision 21 - a research, public affairs and communications consultancy.

His major interests are democracy, homelessness, regeneration, drugs, housing and employment which fuelled his growing involvement in the Labour Party.

Danczuk became the Labour MP for Rochdale in 2010 and he has been particularly active in investigating paedophile activities in his constituency and beyond.

"Lancaster gave me the confidence to be alongside people who had been more fortunate than me".

Lancaster really boosted my self-confidence; I also learned to walk into a room and to talk to people.

**THERESA GRIFFIN**

**GRADUATED:** 1984  
**SUBJECT:** ENGLISH AND THEATRE STUDIES  
**COLLEGE:** CARTMEL  
**CURRENT POSITION:** LABOUR MEMBER OF THE EUROPEAN PARLIAMENT FOR NORTH WEST ENGLAND



**Monday to Thursday, Labour Euro MP Theresa Griffin is in Brussels, bringing the issues of the North West before the European Parliament. The rest of the week she is back home in the North West of England, gathering those real stories of under-privilege and aspiration that she believes need to reach her European colleagues, to keep policy relevant.**

The main requirements Griffin reckons she needs to juggle her complex political life are the ability to work across different cultures and the capacity to listen - both qualities she says she learned from her time at Lancaster.

The daughter of a Coventry car worker, Griffin was already politicised when she arrived at Lancaster. She had been on marches with families of car workers to bring attention to their plight. The University at the time was alight with activity around the Miners' Strike.

At Lancaster in the close-knit Theatre Studies department, she found an instant group of friends.

Two lecturers stand out in her mind - the Head of Department, Keith Sturgess, who was 'incredibly egalitarian' and 'the wonderful Margaret Eddershaw' whose specialist interests in the works of Berthold Brecht brought Griffin's twin passions of theatre and politics together in a production of *The Resistible Rise of Arturo Ui*.

At the end of her third year, Griffin was set on a career in theatre direction, so stayed on to do a Masters. She then returned to Coventry to work in community theatre followed by a job in community arts in Liverpool.

She joined the Labour Party and became an active campaigner at local, CLP, national and European levels. She was a member of Unite's North West Political Committee and represented North West CLPs on the National Policy Forum and has also been a Regional Organiser for UNISON and Director of Communications and Research at North West Arts.

As a Liverpool City Councillor in the 1990s, she was lead member for Economic Development and Europe and was instrumental in bringing Objective One status and billions of pounds of investment to the Liverpool city region.

Griffin previously stood for the 1999, 2004 and 2009 European Parliament elections, before finally winning a seat as the first candidate on the winning Labour Party list in the North West of England including Lancaster and Lancashire.

Her ambitions to do something in politics had already been lit when she arrived at Lancaster, but she could not visualise how it might happen. She feels her student years gave her vital skills she uses as an MEP on a daily basis: "It really boosted my self-confidence," she says. "I also learned to walk into a room and to talk to people."

Our alumni network is expanding and we have graduate volunteers in many countries across the globe. Go online to connect with your local group [www.lancaster.ac.uk/alumni/groups](http://www.lancaster.ac.uk/alumni/groups)

# MEET OUR ALUMNI VOLUNTEERS

**AUSTRALIA**

**Ross McLelland**  
(BBA European Management, 2010, Lonsdale)  
Senior Recruitment Consultant, Michael Page

**CANADA**

**NOVA SCOTIA**

**Jean Helms Mills**  
(Behaviour in Organisations, 1991 and 2000, Graduate)  
Professor of Management, St Mary's University in Halifax

**VANCOUVER**

**Meghan Henselwood**  
(Msc Finance, 2011, Graduate)  
Financial Analyst, Cushman & Wakefield

**CHINA**

**BEIJING**

**Nan Zhang**  
(Accounting and Finance, 2012, Furness)  
Research Institute for Fiscal Science, Ministry of Finance

**GUANGZHOU**

**Josephine Zhang**  
(Business Studies, 2011, Lonsdale)  
Events Manager, British Chamber of Commerce

**HONG KONG**

**Sophia Au**  
(Marketing, 2014, Pendle)  
Business Development Executive, Ageas Insurance Company

**SHANGHAI**

**Jessie Yu**  
(MBA, 2002, Graduate)  
Director, Charles Allan Associates

**Venus Zhang**  
(MA Management and Consulting, 2012, Graduate)  
Associate Consultant, Hans Executive Search

**FRANCE**

**Floriane Blot**  
(BBA European Management, 2008, Pendle)  
Manager of Internal Meetings & Events Venue, EY

**GREECE**

**Nikolaos Korkolis**  
(MSc Accounting and Financial Management, 2009, Graduate)  
Internal Auditor, Coca-Cola HBC

**INDIA**

**BANGALORE**

**Parth Gautam**  
(MSc Management, 2012, Graduate)  
Product Manager, Edusys Services

**DELHI**

**Ravindra Joshi**  
(MBA, 1998, Graduate)  
Head of Group, Tata Power Delhi Distribution Ltd

**MUMBAI**

**Mayank Podar**  
(Mechanical Engineering, 2014, Lonsdale)  
Head of Textile Processing Unit, Nandan Textiles, Pvt. Ltd

**INDONESIA**

**Jeffrey Ng**  
(MA Business Analysis, 1981, County)  
COO & Executive Director, Minimal Fashion Group

**Haikal Bektı Anggoro**  
(Entrepreneurship, 2014, Pendle)  
Project Specialist, Boston Consulting Group

**Gemala Wirandinta**  
(MSc Information Technology, 2014, Graduate)  
Project Management Officer, Indonesia Port Corporation

**JAPAN**

**Lauren Bishopp**  
(Business Studies, 2013, Cartmel)  
Assistant Language Teacher

**SOUTH KOREA**

**Charlie Daeuey Lee**  
(MSc Advanced Marketing, 2005, Cartmel)  
Management Consultant, OpenTide Korea

**MALAYSIA**

**Danny Yap Seng Peow**  
(Accounting & Finance, 2011, Grizedale)  
Owner, Famous-Ed Sdn Bhd

**PAKISTAN**

**Moizzah Asif**  
(Computing, 2014, COMSATS)  
Researcher in Social Computing

**SINGAPORE**

**Leonard Eggert**  
(MSc Finance, 2013, Graduate)  
Analyst, Asia Pacific

**UNITED ARAB EMIRATES**

**Daniel Bateman**  
(Entrepreneurship, 2013, Lonsdale)  
Business Development Manager, WEALTH Arabia Magazine

**UNITED STATES**

**NEW YORK**

**Sarah Laimo**  
(English Literature, 2003, County)  
Associate Editor, Practical Law

**SAN FRANCISCO**

**Adrian Smith**  
(Marketing Management, 2013, Lonsdale)  
Online Marketing and Social Media

**UNITED KINGDOM**

**Vasia Papou**  
(MSc Accounting & Finance, 2010)  
Assistant Manager, Deloitte

**Amy Daultrey Krishnaswamy**  
(American Studies, 2001, Bowland)  
Designer and Consultant

WE ALSO HAVE CONTACTS IN BELGIUM, CYPRUS, THAILAND AND LATIN AMERICA

VISIT THE WEBSITE FOR FURTHER DETAILS [WWW.LANCASTER.AC.UK/ALUMNI/GROUPS](http://WWW.LANCASTER.AC.UK/ALUMNI/GROUPS)

If you are interested in helping us co-ordinate a group in your country, please email [alumni@lancaster.ac.uk](mailto:alumni@lancaster.ac.uk)

# 50TH ANNIVERSARY MORE MEMORIES

AFTER 15 MONTHS OF ACTIVITIES IN THE UK AND AROUND THE WORLD, OUR 50TH ANNIVERSARY CAME TO A CLOSE.

It has been an opportunity for us to reconnect with old friends across the globe, as well as to introduce new people to our work here at Lancaster. Thousands of alumni have joined us in celebrating; from our Grand Alumni Reunion in Lancaster to reunions in Jakarta and New York, Bangkok to Milan. Here are some photographic memories of the last few months.



Grand Alumni Dinner, Great Hall, September 2014

## GLOBAL CELEBRATION FOR 50TH ANNIVERSARY

Alumni from as far afield as Australia, Canada, Hong Kong and Peru travelled to campus for the Grand Alumni Dinner in September which was attended by 280 guests and hosted by Vice-Chancellor Professor Mark E. Smith.

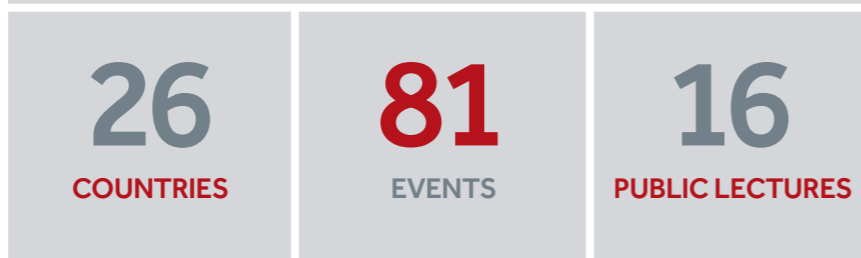
Guest of honour and alumnus speaker was Game of Thrones actor Roger Ashton-Griffiths, who studied music at Lancaster from 1975 to 1978.



DENISE DEW-HUGHES AT THE MEMORABILIA EXHIBITION



ALUMNI ENJOY THE ANNIVERSARY DINNER RECEPTION



ALUMNI IN SINGAPORE GATHER FOR A RECEPTION



PUBLIC LECTURE ON PENDLE WITCHES AND PRISON WRITING, NOVEMBER 2014



Music in County Square

## STAFF AND FAMILIES' SUMMER FETE

Around 2000 members of staff and their families enjoyed all the fun of the fair when campus played host to attractions for everyone.

Attractions included a big wheel, carousel, an urban beach, sports day races, donkey rides and an array of staff bands.



## GRAND ALUMNI BALL

The RAC Club, Pall Mall played host to a Grand Alumni Ball in February 2015. 150 guests attended including James May and Sir Chris Bonington.



## COMMUNITY ACTIVITIES DAY

Over 4000 people came to campus last September to see Lancaster showcase its research, teaching and facilities on campus.

More than 100 activities were lined up for visitors from babies to senior citizens.



Janet Regan has a hair-raising experience with the Van Der Graaff machine!

Following the success of the celebrations, the University has committed to holding an ongoing series of public lectures with events planned in Lancaster and London. The successful Community Activities Day held on campus will also be repeated on a biennial basis, with the next one due in 2016 - [www.lancaster.ac.uk/steps/events](http://www.lancaster.ac.uk/steps/events)

A TEAM FROM LANCASTER UNIVERSITY LED BY DR CLAIRE HARDAKER HAS PRODUCED A CUTTING-EDGE TOOL THAT COULD HELP TO PINPOINT CYBERBULLIES, TROLLS AND EVEN RADICALISING GROUPS ON BUSY SOCIAL NETWORKS SUCH AS TWITTER.

# THE ANTI-SOCIAL NETWORK: TRACKING THE TROLLS

**Dr Hardaker, a lecturer in Corpus Linguistics, began an ESRC-funded project researching abusive behaviour on Twitter in December 2013.**

The project quickly demonstrated that whilst tackling anti-social online behaviour is of key importance, sites like Twitter produce data at such high volumes that simply trying to identify relevant messages in amongst all the irrelevant ones is a huge challenge by itself. However, less than a year into the project, Hardaker and her team were invited to Twitter's London headquarters to present findings from the project to Police, the Crown Prosecution Service, and Twitter itself and the results of this research subsequently influenced Twitter to update its policy on abusive online behaviour.

The interest from the police and Crown Prosecution Service also encouraged Hardaker to turn her research into a tool that could filter the 'noise' out of billions of online messages, thereby enhancing the useful 'signals' that can lead to the identification of accounts, texts, and behaviours of interest. This software – known as FireAnt – was built for Hardaker by fellow corpus linguist, Professor Laurence Anthony and whilst initially designed to handle data from Twitter, it can also analyse text from almost any online source, including sources such as Facebook, Google+, Tumblr and Reddit.

Hardaker said: 'The Government is trying to understand how social networks are involved in all sorts of issues like child-grooming, human trafficking and radicalisation. FireAnt offers the ability to analyse huge datasets to identify abusers, their networks and their targets.'

A key aspect of this analysis in Hardaker's work is the process of escalation from online messages that are simply unpleasant or annoying up to extreme, illegal behaviour and even that which could turn into physical, offline violence. One potential use for FireAnt is to pinpoint high-risk individuals and networks who may go on to be a threat, whether to themselves or others.

Her knowledge of the English language has already proved crucial at a national level. Her skills were used in 2014 to analyse videos to try to identify the Islamic State (Isis) militant with a British accent who appeared in a video of the apparent beheading of US journalist James Foley. Hardaker studied the clip and said the man's vowels marked him out as probably from the south east of England.

Hardaker specialises in aggression, deception and manipulation online. She is also working on other projects that involve analysing live online social networks for escalation of abusive behaviour, the importance of the internet in transnational crime such as human trafficking and the internet as an arena for grooming and coercing victims.



The Government is trying to understand how social networks are involved in all sorts of issues like child-grooming, human trafficking and radicalisation. FireAnt offers the ability to analyse huge datasets to identify abusers, their networks and their targets.

Originally from Bradford, Claire Hardaker studied her Masters and PhD at Lancaster University. Initially interested in aggressive online behaviour, she started studying trolling when she realised that there was virtually no research on it and what started as a simple interest has now proved to have implications for national and international security. She has featured extensively in the media in interviews where she is regularly consulted for her breadth of knowledge of her research.



**500,000,000**  
TWEETS SENT EVERY DAY

That's about 21 million per hour, 350,000 per minute, or 6,000 per second.



**28%**  
TIME SPENT ON SOCIAL MEDIA

We spend an estimated one third of our time online on social media.



**£27 BILLION**  
PER ANNUM

Estimated cost of cyber crime to the UK economy.



# University News

## FINDING YOUR INNER ENTREPRENEUR



Last year the University's Enterprise Team invited our entrepreneurial alumni to join a pilot; a fun and creative event for alumni and students to get together to exchange ideas and contacts. The first event in the series took place during Global Entrepreneurship week 2014.

Alumni from across the world got in touch via LinkedIn and with so many interesting stories and learning to be shared, the Enterprise Team's Simon Harrison secured funding from the alumni Friends Programme to run a series of three further events in March, June and November 2015.

David Guest (Culture, Media & Communication, 2003, Cartmel) of Workshop Media spoke at the first event in November. David feels passionate about supporting 'the University's fresh ideas'.

The event caught his eye because he says that you can't learn to be an entrepreneur, other than through the journey you start when you take that step. For David it was an opportunity to share the story of his sheer 'bloody mindedness' and 'meet the bright young minds that I could be collaborating with in the future'.

Amanda Brooks of the Enterprise Team said that this has been a popular series of events for the both students and alumni. "We are grateful to our narrators who captured and shared the essence of what it is to be an entrepreneur. The illustrations and highlights will be shared for students through digital media."

Please email [alumni@lancaster.ac.uk](mailto:alumni@lancaster.ac.uk) if you would like to get involved in future events

## TOP TEN AGAIN!

Lancaster University has risen two places to be ranked 9th nationally out of 126 UK universities and is the leading university in the North West according to the *The Complete University Guide for 2016*, published in April 2015.

Lancaster has charged ahead of its Russell Group peers in the region, the University of Manchester and University of Liverpool.

The other top ten universities are Cambridge in first place, Oxford, LSE, Imperial College London, Durham, St Andrews, Warwick, Surrey, and University College London.

In separate listings covering 67 subjects, Lancaster appears in national top ten listings for 14 of the 33 subjects it offers, topping the table for Social Work.



Other subjects ranked in the top ten are Accounting and Finance, Art and Design, Business and Management Studies, Communications and Media Studies, Drama, Dance and Cinematics, French, General Engineering, Iberian Languages, Italian, Linguistics, Marketing, Social Policy and Religious Studies.

Lancaster is ranked highly for graduate prospects with 78% of students going on to graduate level employment or further study. The Complete University Guide is based on ten measures: student satisfaction, research quality, research intensity, entry standards, student/staff ratio, spending on academic services, spending on student facilities, good honours degrees achieved, graduate prospects and completion.



## MAKING A DIFFERENCE

Kyran Darnton, first year student, explains how the alumni Friends Programme funding has helped his studies.

I chose Lancaster as I wanted to attend a university that was local, but renowned as an outstanding educational institution. I am studying for a BA Hons Politics with International Relations and find it stimulating and challenging. It has provided me with the skills necessary to grow, develop and work towards entering the real working world.

The bursary gave me the opportunity to gain real life experiences that will have a significant impact on my future opportunities.

It enabled me to work in Cornwall as a political intern for the parliamentary candidate for Camborne, Redruth and Hayle.

Having lived independently since the age of 16 I am fully responsible for the payment of rent and bills and this funding helped me to cover these costs during my internship.

I would like to obtain a first class degree. Once I have graduated I hope to enter a career in politics and become an MP. I aim to make a difference and prove that sometimes what seems impossible can be achieved.

Thank you for your support, I am truly grateful for your donations to Lancaster University.

## DAVID LEWIS DONATES A SECOND GIFT



David Lewis (Politics and International Relations, Lonsdale, 1975) first supported the University in 2012 and has recently donated a further £100,000 for PPR scholarships. David built a successful career in the shipping industry and has recently retired as Chairman of Howe Robinson & Co.

Keen to give something back to the University, he was inspired to support scholarships due to the introduction of full fees for undergraduates from 2012. David regrets that studying is no longer 'free', as it was for him.

"I am committed to helping undergraduates through University. I remain very concerned about the debt that many students will build up during their studies."

## PRESTIGIOUS ARCHITECTURAL AWARD FOR NEW ENGINEERING BUILDING



The University's new Engineering Building has won recognition in the Royal Institute of British Architects (RIBA) Regional Awards.

Chosen from a shortlist of 15, the new Engineering Building was praised by the judges for its 'careful detailing, strategy and quality.'

The eco-building also won the Sustainability Award, reflecting the University's commitment to reduce its carbon emissions. The RIBA Regional Awards are given to buildings across the UK recognised as important contributions to architecture.

Mark Swindlehurst, the Director of Facilities, said: "It is great that the high-quality of the building has been recognised by these two RIBA Awards.

The building provides a modern, light, sustainable and inspirational working environment for our students and academics to learn, teach and conduct world-leading research and is a first-rate addition to the fantastic facilities on campus here at Lancaster."

The project architect, Paul Hughes, of John McAslan + Partners, won the region's Project Architect of the Year Award.

The building was officially opened on 4 March by the new Chancellor, Alan Milburn, and boasts a world-class environment with specially designed workshops, teaching laboratories and office areas.

The Engineering Building will be put forward for the RIBA National Awards, with the recipients announced shortly.

## DATES FOR YOUR DIARY:

### 2015

**21-23 AUGUST**  
Pendle College 40th Anniversary reunion weekend, Lancaster

**10 SEPTEMBER**  
Welcome to the Big City and Careers Networking, London

**16 SEPTEMBER (TBC)**  
Alumni reception, Isle of Man

**6 OCTOBER**  
Alumni reception, Hong Kong

**8 OCTOBER**  
Alumni reception, Kuala Lumpur

**10 OCTOBER (TBC)**  
Alumni reception, Singapore

**13 OCTOBER (TBC)**  
Alumni reception, Dubai

**22 OCTOBER**  
Creative Industries Networking, London

**25 NOVEMBER**  
Sir Roland Smith Lecture, The Royal Society, London

### 2016

**12 FEBRUARY**  
Alumni reception, Delhi

**11-13 MARCH**  
Grizedale College 40th Anniversary reunion weekend, Lancaster

**MARCH (TBC)**  
Alumni receptions in Boston and New York

**28 APRIL**  
London Alumni Reception, The House of Lords

Other events will take place throughout the year, including locally run alumni gatherings across the world.

Full details and booking online [www.lancaster.ac.uk/steps/events](http://www.lancaster.ac.uk/steps/events)



Details provided above were correct at the time of going to print but are subject to change. Please check events listing online regularly.



Lancaster gave me the opportunity and the time to discover who I wanted to be and you can't put a value on that.

HE IS NOT DRAWING COMPARISONS WITH HARRY POTTER'S HOGWART'S ACADEMY, BUT FOR SAM FITTON, LANCASTER PROVED TO BE THE PERFECT LAUNCH PAD FOR HIS CAREER AS A PROFESSIONAL AWARD-WINNING MAGICIAN.

# SAM LEARNS THE TRICKS OF THE TRADE

Sam Fitton Environmental Biology, 2009, Cartmel



He had dreamt of a performing career from his early teens, but his passion for science directed him first towards medicine and then to becoming a biology teacher when he started out at Lancaster. But the magic had taken hold.

Brought up in Ramsbottom, he says every stage of his education channeled him towards Lancaster, but having visited other universities, the friendliness he found there made him even more keen to go there, plus the quiet campus and the views over to Morecambe Bay. He had been doing conjuring tricks since the age of eight, and even at 10 was dipping into reference books to find ever slicker tricks, which gained him professional gigs in hotels, for weddings and birthday parties from the age of 14, alongside his school studies.

'As a fresher I used my magic tricks as a real ice breaker,' says Fitton. 'From the start I was known as Magic Sam. I would do a trick and I would make friends for life. Magic is hard to ignore.'

He found his studies absorbing - particularly the theories of evolution - which gave him the basis for setting up his current business. The Red Queen Hypothesis states that one has to keep running to stay in the same evolutionary position, whilst evolution requires a superhuman effort. The idea took root after he gave up his scientific ambitions, as a sound principle on which to operate as a self-employed performer.

Outside his studies he took an active role in college life, which gave him more vital life skills. His first year in charge of publicity for the JCR taught him valuable marketing skills, whilst his stint as College President provided him with event management, book keeping and financial experience. 'It's amazing how these skills are transferrable,' says Fitton. 'With what I learned in Biology and socially, I had my business model.'

During his final year, the idea of performing as a magician took root, but he did not know how to make it a reality. So he signed up as a Special Constable with Lancashire Police and then worked for Lancaster County Council's customer services department, all the time performing his magic tricks at weddings, corporate and VIP events. Then in 2013, he left his job to follow his dream.

In 2014 he was voted North West Close-Up Magic Champion and he also won the 'UK's Best Wedding Entertainment' 2015. Sam also performed his magic at the University's Grand Alumni Ball in London earlier this year.

Fitton often makes up his own tricks, so repeatedly calls upon the scientific knowledge he developed during his time at Lancaster, to create his illusions. For him the value of his three years was in equipping him with a whole set of skills on which he could build an unorthodox career.

He says: 'Lancaster gave me the opportunity and the time to discover who I wanted to be and you can't put a value on that.'



# Your Lancaster

THERE ARE A NUMBER OF BENEFITS AVAILABLE TO LANCASTER ALUMNI FROM THE UNIVERSITY EVEN IF YOU LEFT A LONG TIME AGO. HERE'S A SELECTION:

## 1. FREE COURSES

We run free online courses in partnership with FutureLearn. These are sometimes referred to as 'MOOCs', or massive open online courses.

You can register online to join any of the courses - you just need access to a computer, tablet or mobile phone. Courses re-run at regular intervals and new courses are continually being developed, so keep checking the website [www.lancaster.ac.uk/study/free-courses](http://www.lancaster.ac.uk/study/free-courses)

**COURSES COMING UP:**



**GLOBAL FOOD SECURITY**  
Addressing the Challenge  
Starts 31 August 2015 – 8 weeks



**WORDSWORTH**  
Poetry, people and place  
Starts 7 September 2015 – 4 weeks



**CORPUS LINGUISTICS**  
Method, Analysis, Interpretation  
Starts 28 September 2015 – 8 weeks



## 2. LUSU MERCHANDISE

Use the code 'ALUM10' to receive a 10% discount off LUSU Merchandise online, visit [www.shop.lusu.co.uk](http://www.shop.lusu.co.uk)

## 3. ALUMNI LOYALTY SCHOLARSHIP

Lancaster University will offer a reduction in tuition fees to all taught Master's programmes for eligible applicants, determined by the level of undergraduate award achieved. The value of the scholarship is as follows:

- 20% fee reduction for 1st Class Hons degree holders
- 10% fee reduction for 2:1 Hons degree holders

The Scholarship is open to all our alumni, regardless of nationality or graduation year. You do not need to apply for this scholarship, you will qualify automatically if you meet the eligibility criteria and the course entry requirements. [www.lancaster.ac.uk/pgscholarships](http://www.lancaster.ac.uk/pgscholarships)

## 4. LANCASTER MASTER'S SCHOLARSHIPS

There are also a number of Lancaster Master's Scholarships available as part of a government initiative to offer additional support for students wishing to progress to Master's level study. This scheme is open to UK/EU students who began their studies after 1 Sept 2012.

### University Scholarships

We also offer a range of scholarships directly through our faculties and departments which mainly contribute towards fees and possibly living costs.

### Funded PhD Opportunities

There are also a number of studentships for PhD students across the four faculties and a range of generous studentships through our Doctoral Training Centres.

For further information about any of the above visit [www.lancaster.ac.uk/pgscholarships](http://www.lancaster.ac.uk/pgscholarships)

## 5. CAREERS

You can have careers support from Lancaster for as long as you need it! Sign up with TARGETConnect for online help, access a range of careers digital resources, find out which companies are recruiting graduates, consider further study options, acquire help with CVs, interviews or, as an employer, look at how we can help you recruit the right staff. [www.lancaster.ac.uk/alumni/alumni-careers/](http://www.lancaster.ac.uk/alumni/alumni-careers/)

## 6. LIBRARY

We can now offer our alumni free access to JSTOR, an online database covering thousands of academic journals, visit [www.alumni.lancs.ac.uk/library](http://www.alumni.lancs.ac.uk/library)

The Library is open to the general public for reference, but as a Lancaster graduate you can join as an alumni member for a fee of £30 per year and borrow up to six items.



## 7. FACEBOOK AND LINKEDIN GROUPS

We have active Facebook [www.facebook.com/lancasteruniversityalumni](http://www.facebook.com/lancasteruniversityalumni) and LinkedIn groups [www.linkedin.com/lancasteruni](http://www.linkedin.com/lancasteruni)

If you have recently graduated from Lancaster visit the new graduates' web page to check that you have all the relevant alumni information [www.lancaster.ac.uk/alumni/newgrads](http://www.lancaster.ac.uk/alumni/newgrads)



## 8. CONNECT WITH THE MANAGEMENT SCHOOL NETWORK



Management School alumni can connect with peers online via the new platform: LUMS Connect.

Register at [www.lancasteralumni.co.uk](http://www.lancasteralumni.co.uk) to expand your network, receive insights and support from alumni mentors, keep up-to-date with LUMS news... and more!

At this stage LUMS Connect is a pilot scheme for alumni and students of Lancaster University Management School degree programmes only.



## 9. SPORTS CENTRE

If you live locally, Lancaster graduates may join the Sports Centre for the same price as staff. You will need to provide a copy of your degree certificate when taking out membership to qualify for the discount [www.lancaster.ac.uk/sport/sports-centre/membership](http://www.lancaster.ac.uk/sport/sports-centre/membership)

## 10. WORLDWIDE ALUMNI NETWORK

Our volunteer network is rapidly expanding. See feature for details (page 9) and refer to website for updates [www.lancaster.ac.uk/alumni/groups](http://www.lancaster.ac.uk/alumni/groups)



# Honorary Graduates

Each year, Lancaster awards honorary degrees to people with an outstanding, international or leading national reputation in their field. The following awards were made in 2014:



**Carol Birch** is an acclaimed novelist and author of eleven books. She published her first one in 1988.



**Professor Paul Boyle** is the former Chief Executive of the Economic and Social Research Council and now Vice-Chancellor for Research at the University of Leicester.



**Professor Lynn Gladden CBE FRS FrEng** is the Shell Professor of Chemical Engineering and Pro-Vice-Chancellor for Research at the University of Cambridge.



**Ian McMillan** is a hugely popular poet and broadcaster on radio and television.



**Bruce Sewell** is a world renowned lawyer specialising in intellectual property law currently working at Apple Inc.



**Professor Paul Wellings CBE** was the Vice-Chancellor of the University of Lancaster between 2002 and 2011.



**Professor Jianhua Zhang** is a Professor of Plant Biology at the Chinese University of Hong Kong.

Professor Paul Boyle, Bruce Sewell and Professor Jianhua Zhang are all Lancaster alumni. Honorary Degrees in July 2015 will be awarded to:

**Professor Dieter Bimberg**  
**Professor Georgina Mace**  
**Dr Hugh Montgomery**  
**Gillian Tett**  
**Professor Scott Zeger**

# Alumni Awards

The University has introduced alumni awards to Lancaster graduates who have made a substantial contribution in their field and have developed an outstanding international or national reputation amongst their peers. The following awards were made in 2014:



**Dr Allan Chapman FRAS** (History, 1972, Fylde) is a historian with specific research interests in scientific biography and astronomy. In addition to teaching history at Oxford, he broadcasts extensively on BBC TV and radio and on independent TV.



**Glen Duncan** is a British author, born to an Anglo-Indian family, specialising in stories that can't easily be pigeon-holed. His idiosyncratic talent has produced 10 novels.



**Professor Sarah Macfarlane** is currently Professor in the Department of Epidemiology and Biostatistics at the University of California at San Francisco (UCSF) and a pioneer of the global health movement.



**Caroline Rookes CBE** was appointed Chief Executive of the Money Advice Service in 2013. During her career in the Civil Service she has overseen a number of major developments to improve people's personal finances.



**Ranvir Singh** is a British television presenter and journalist, best known as a newsreader for a number of broadcasters. She worked on North West Tonight from 2005, joined ITV's Daybreak between 2012 and 2014 and currently reads the national news for ITV.

Alumni Awards in July 2015 will be awarded to: **Paul Stewart, Kathleen Reid, Barbara Daniels, Rainer Hersch**

# In Memoriam

**JOHN CROOKES**, staff member from the Department of Management Science from 1967 to 1995 died on June 3 2015. John was particularly noted for his developments of computer simulation.

**RICHARD DOW** (PhD Physics, 84, Bowland, MSc Applied Crystalline Physics 81) and 'Bowland Tuner' died in May 2015. Richard touched so many lives with his immense generosity, humanity, positivity and humour.

**PROFESSOR JOE SHENNAN**, former Head of the Department of History and Deputy Vice-Chancellor, died on 25 May 2015. A full obituary appears on the on the In Memoriam section of the alumni website.

**ARTHUR BOEN**, Chemistry Porter for many years, died on 19 May 2015 aged 94 years. Arthur first worked for the University at St Leonardsgate, and then at Bailrigg.

Emeritus **PROFESSOR JOHN HUGHES**, Sociological Analysis, died on 15 May 2015. He worked at Lancaster from 1970 to 2006 and was known as 'a quiet giant of sociology in a digital world'.

**COLIN ADAMS**, former University Planning Officer from 1990 to 2004 died in May 2015, aged 75. He served under five Lancaster Vice-Chancellors during more than forty years of service. After retiring from full time work in 2004, he returned to support the formation of the Lancaster Environment Centre.

**MICHAEL FRENCH**, the first Head of the Engineering Department and founding professor, died in February 2015. Sadly, he died just one week before the new Engineering Building was due to be formally opened.

**PROFESSOR SHAUN FISHER**, Department of Physics, died in January 2015. Shaun joined the department in 1988 and apart from a brief period at CNRS in Grenoble had been with the department ever since. Shaun was regarded as one of the world's leading low temperature physicists.

**SIMONE NOVELLO** (PhD Marketing/ Sociology, 2006) passed away in November 2014 after a prolonged illness. Simone arrived in Lancaster in June 2002 after completing a degree at the University of Trento to start his doctoral work under the supervision of Professors Elizabeth Shove (Sociology) and Luis Araujo (Marketing).

**ANNE CLUYSENAAR**, former member of staff, died in November 2014. Anne was a lecturer at Lancaster from 1965 to 1971. She was a member of the Department of English; primarily a poet but someone who also taught stylistics and even general linguistics, as well as American literature.

**JUDITH KIRK**, neé Smallwood (English, 1979, Pendle) died in September 2014 after suffering with MS for many years. Judith started a successful career in public relations and will be remembered by many contemporaries in Pendle College for her individual style which marked her out against the uniformity of the late-1970s denim-clad campus.

Emeritus **PROFESSOR GRAHAM CHAPMAN** died suddenly on 31 August 2014. Following degrees from Cambridge and a Chair at SOAS, Graham joined Lancaster's Geography Department in 1994 and was HoD from 1995 to 2000. He took early retirement in 2008.

**NICHOLAS RUSSELL**, the sixth Earl Russell (Politics, 1994, County), a tireless campaigner for disability rights and a member of the Lancaster University Court for nine years, died aged 45 in August 2014. He dedicated his working life to a combination of his favourite passions: disability rights and politics.

Emeritus **PROFESSOR GEOFFREY LEECH** died in August 2014 aged 78. He joined Lancaster in 1969 and was a founding member of the Department of Linguistics and Modern English Languages. He retired in 2002. In March 2009, he was awarded an Honorary Fellowship of Lancaster in recognition of his service to the University.

**PROFESSOR PETER HARMAN** from the Department of History died in August 2014, aged 70, after a long illness. Professor Harman joined Lancaster in 1974 and stayed until his retirement in 2007. He published chiefly on the history of natural philosophy and physics in the 18th and 19th Centuries.

**DAME KATHLEEN OLLERENSHAW**, a Deputy Pro-Chancellor at Lancaster from 1978 to 1992, died in August 2014 aged 101. Dame Kathleen had a distinguished career as a mathematician, was the first woman President of the Institute of Mathematics and its Applications, an outstanding researcher on magic squares, an educationalist, for which she was appointed DBE in 1971 and an expert amateur astronomer.

**JOHN CECIL CLEGG**, mathematician and concert pianist (1928-2014) died suddenly in August 2014. John was unusual in combining two separate strands in his career. He was appointed as lecturer in mathematics in January 1966, but with an agreement by the Vice-Chancellor, Charles Carter, that he could combine this role with external work as a concert pianist. He was subsequently given a joint appointment as pianist-in-residence from 1981 to 1993.

**SIR RICHARD MACCORMAC** (1938-2014), Architect of the Ruskin Library, the University Library extension and Reading Room died in July 2014 aged 75. Sir Richard was one of Britain's foremost modernist architects who was also a former president of the Royal Institute of British Architects.

**PROFESSOR ALAN MERCER**, Founding Member of the University died in July 2014. In 1964, when he had the chance to start the Department of Operational Research (OR) at Lancaster, he could not resist the challenge of seeking to bridge the gap between industry and a University. He formally retired in 1998. In September 2013, he closed the Department's 50th anniversary celebrations with a lecture of reminiscences.

**DR. LILIANA COPOSESCU**, recipient of a doctoral degree in Linguistics from Lancaster University in 2002 died in June 2014, aged 61, after a long battle with cancer. She entered a PhD programme at Lancaster University in 1997 through the LANCDOC project in collaboration with the Romanian Ministry of Education and Research.

**CLIFF WILKINSON**, Department of Management Science, passed away in June 2014 following his battle with cancer. Cliff came to Lancaster, to what was then the Department of Operational Research in 1965. Following his retirement in 1990, he continued to be involved with teaching in the department for another decade.

**DAVID CURLE** (History, 1975, Furness) died in May 2014. He held various positions in companies including Bristol Myers and Whitbread where he became Procurement Manager for the group. At university he broadcast for URB and became the envy of his friends when he interviewed some of the rock bands of the day, including Freddie Mercury and Hawkwind.

**PETER FISHER** (Environmental Sciences, 1977, Cartmel) died in May 2014. Professor Fisher served as editor of the International Journal of Geographical Information Science (later Science) from 1998 to 2007, the very time when GIS was establishing its credentials within the wider arena of information sciences.

**BRIAN KENNETT** (MA Marketing Education, 1973) passed away following a heart attack in May 2014 aged 72.

Emeritus **PROFESSOR KEITH SOOTHILL** (Social Research), who died in February 2014, has a full obituary available on this link [www.theguardian.com/education/2014/mar/20/keith-soothill](http://www.theguardian.com/education/2014/mar/20/keith-soothill) (not previously referred to in the 2014 edition of STEPS).

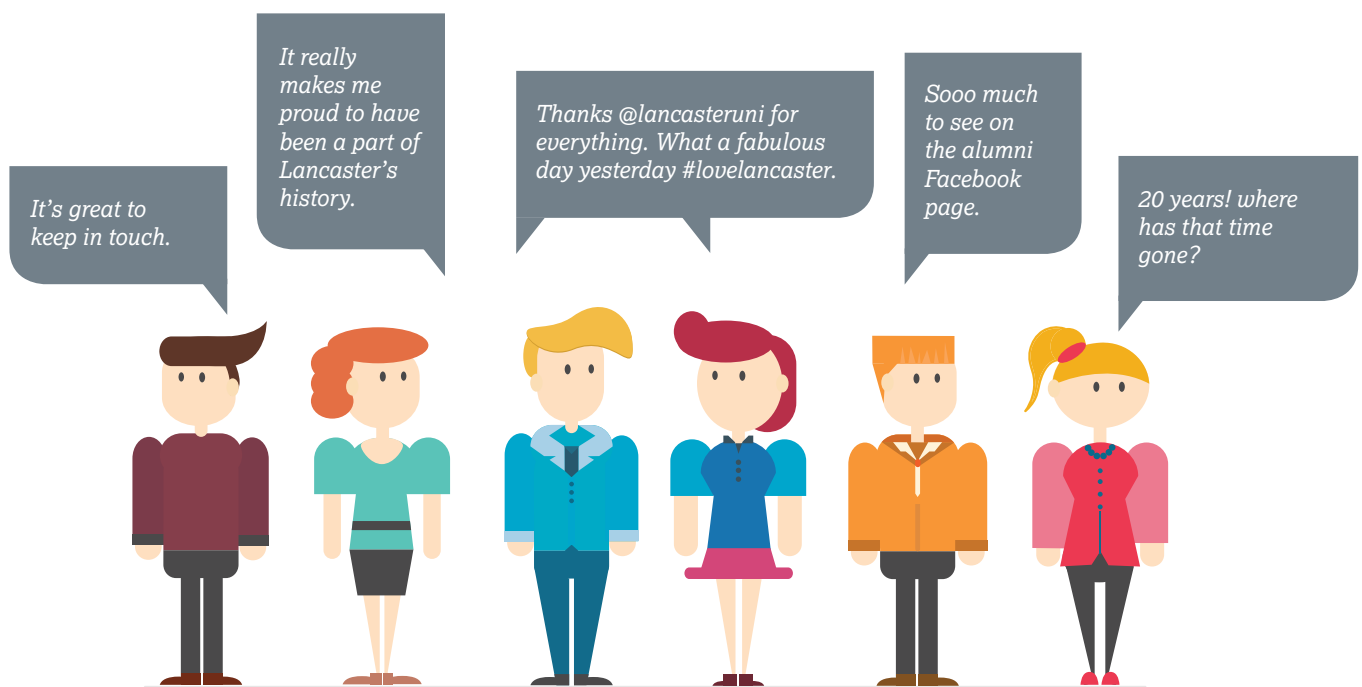
For full obituaries please visit [www.lancaster.ac.uk/steps/obituaries](http://www.lancaster.ac.uk/steps/obituaries)

---

# YOUR ALUMNI NETWORK

---

ALUMNUS (PL. ALUMNI, FEM. ALUMNA) N. A FORMER STUDENT



## KEEP IN TOUCH

Register on our website, like our Facebook page and join the alumni LinkedIn group. Keep your details up to date to receive newsletters, STEPS magazines and invitations.

## GET INVOLVED

Come back to campus, give a talk, mentor students or help to organise alumni events – there are plenty of ways to keep your links with Lancaster.

## JOIN OUR ALUMNI NETWORK

We have over 130,000 graduates in over 170 countries. Join your local group and come to events or contact us about starting your own!

## BENEFITS AND SERVICES

Lancaster continues to offer ongoing careers support, library services, discounted merchandise, scholarships for further study and special offers on campus accommodation.