

# Decarbonisation & Energy Efficiency Workshop

LET'S GO  
**ZERO**  
2030



# Decarbonisation – Actions to consider

Transport



Procurement



Food



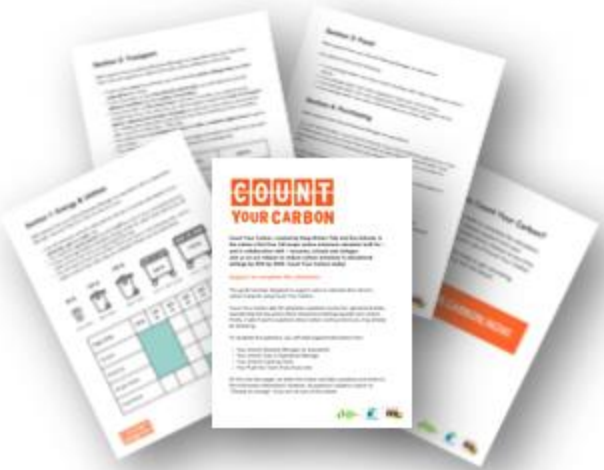
Waste



Energy  
Energy Sparks



All Areas



# Group Discussion

Introduce yourselves and discuss:

- What decarbonisation actions has your school already achieved or is in the process of implementing?
- What has worked well for your school, or any challenges?
- What co- benefits have you seen?
- Were pupils involved? How?

**Energy**  
(behaviour  
change)

**Energy**  
(infrastructure)





**Waste**

**Food**

**Transport**

**Procurement**

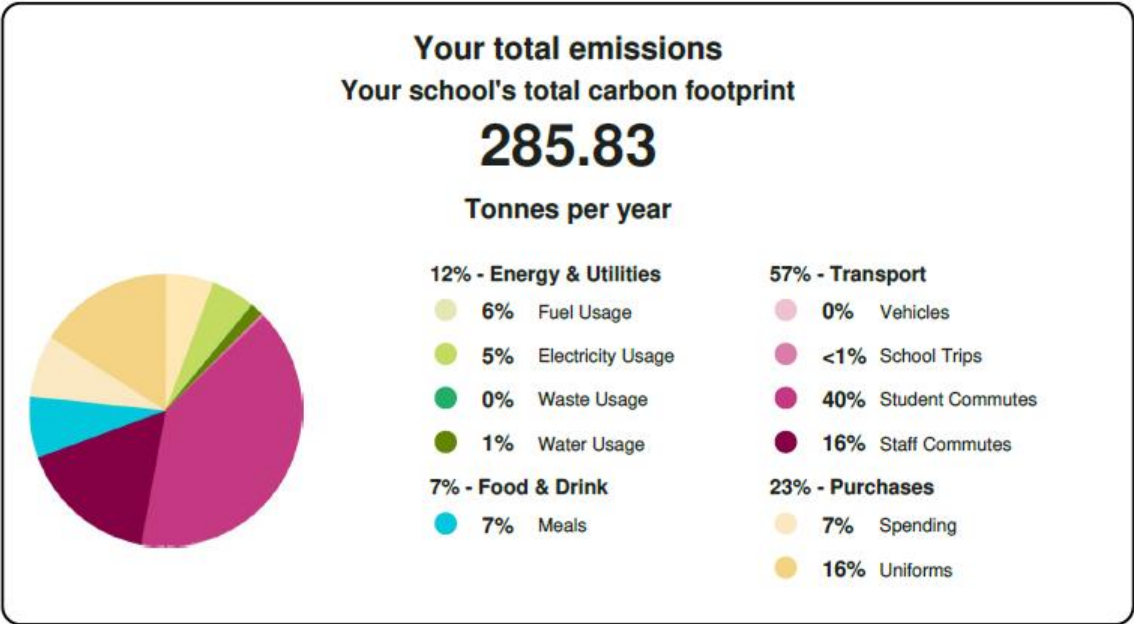
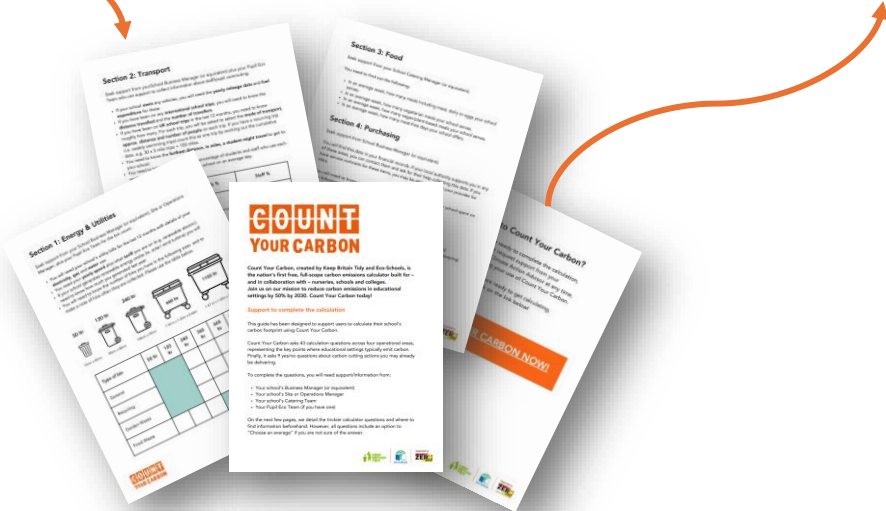
# Co-benefits

 <b>Educational Benefits</b>	 <b>Health and Wellbeing</b>	 <b>Financial Savings</b>	 <b>Environmental Impact</b>
<b>Learning opportunities</b>	<b>Healthier school environments</b>	<b>Lower energy costs</b>	<b>Local ecosystem benefits</b>
<b>Environmental literacy</b>	<b>Increased mental and physical wellbeing for children</b>	<b>Waste disposal savings</b>	<b>Playing part to avert climate change impacts</b>
<b>Career preparation (green jobs)</b>		<b>Long-term savings</b>	<b>Waste reduction</b>

# We suggest this as a priority action on your CAP - Understand your school's carbon footprint



## COUNT YOUR CARBON



# Planning for Action



## Small Groups:

- **Choose** ~3 actions you could include in your draft plan (add to template).
  - Think about who from your school could lead on this action and when?
  - Think whether and how pupils could get involved?



# Decarbonisation - Example Actions



DECARBONISATION					
Energy- Behaviour change	Take part in a switch off campaign  <b>Let's Go Guide</b>	Monitor energy use on a regular basis through platforms such as <a href="#">Energy Sparks</a>  <b>Let's Go Guide</b>	★ Set your BMS/BEMS appropriately in the evenings, weekends and school holidays, when the building may be out of use	Instruct all staff to follow heating efficiency practices eg turn heating down vs opening windows	Implement a power down strategy for electric devices and appliances e.g. sleep settings on computers and projectors and turning off scanners/ printers overnight
Energy- Buildings and Infrastructure	Install a smart meter	★ Investigate the potential for solar panels  <b>Let's Go Guide</b>	Investigate potential for ground/air source heat pump	★ Install LED lighting  <b>Let's Go Guide</b>	Insulate your building



# Planning for Action



## Small Groups:

- **Choose** ~5 actions you could include in your draft plan (add to template).
  - Think about who from your school could lead on this action and when?
  - Think whether and how pupils could get involved?





# Decarbonisation - Example Actions

DECARBONISATION - CONTINUED					
Procurement	Consider carbon footprint and environmental practices of the services/companies you use	Include sustainability as part of your criteria for procurement	Reduce branding on uniform and school items	Reuse school uniform through a uniform exchange  <b>Let's Go Guide</b>	Factor in energy efficiency when buying new equipment such as fridges (using efficiency ratings to guide purchases)
Food	★ Offer a vegan / vegetarian option every day	Explain reasons for eating less meat during lessons, assemblies etc. Promote plant-based menu options	Weigh food waste from kitchen and plates and share results	Have separate bins for food waste in the kitchen/ cafeteria/ dining room/ staff room	Start or improve composting and food waste facilities (onsite)
Transport	Conduct a staff and student travel survey	Run active travel campaigns e.g. <a href="#">Big Walk and Wheel</a> ; <a href="#">Wow: the walk to school challenge</a>  <b>Let's Go Guide</b>	Encourage staff to carpool	Provide cycle proficiency lessons in school e.g. <a href="#">Bikeability</a>	Install EV charging points  <a href="#">Government funding</a> available
Waste	Label bins clearly	Switch to use washable/ reusable plates and cutlery	Education around recycling as part of assemblies or other whole school opportunities	Contact waste provider to ensure compliance with new <a href="#">March 2025 recycling regulations</a>	Engage with a plastic reduction campaign e.g. <a href="#">Surfers Against Sewage</a>  <b>Let's Go Guide</b>

**LET'S GO ZERO 2030**

**Energy: #1**

**Let's...cut school energy use!**

Lowering energy use will shrink your school's bills and its carbon footprint. Encouraging students to think about this challenge will also spark conversations at home, and potentially change in the wider community.

There's support out there to understand you school's energy use, and to help the whole school community tackle this problem in a fun and engaging way. Why not create an energy taskforce - maybe within your Eco Club (if you have one) - to champion energy reduction?

**Understand your energy use - and get tailored ideas to lower it**

Let's Go Zero recommends cutting energy use (and carbon emissions) with **Energy Sparks**, an online analysis tool and education programme. Energy Sparks examines your gas and electricity consumption, then comes up with ideas for action, tailored to your school. It also helps you share data and plans with your students in a clear, engaging way so they can be involved in reducing energy waste.

The Energy Sparks programme currently costs £525 per year\*. However, most schools taking part can expect to cut energy use by over 10% within a year, lowering bills by between £2,500 and £6,000.

\*Contact your Climate Action Advisor, who can let you know the availability of fully funded Energy Sparks places.

**Power down with Switch Off Fortnight**

Inspire students and staff to take action by joining **Switch Off Fortnight**. A nationwide switch off event happens in November - but you can use the campaign resources to run your own Switch Off Fortnight at any time. Simply upload your meter readings, then energise the whole school into taking simple actions, such as turning off unused lights or smart boards. At the end of the fortnight, a clever calculator will show you how much energy you've saved.

The Switch Off Fortnight resource pack also includes curriculum-linked resources. Whether you want an engaging assembly, a funny and thought-provoking curriculum-linked lesson plans, there's everything you need to create big and cost savings.

Registered in England and Wales as a company limited by guarantee. Registered number: 05062574/Charity number: 1104153

**LET'S GO ZERO 2030**

**Transport: #1**

**Let's...encourage active travel!**

Supporting greener journeys to and from school will cut air pollution and help staff, students and their families stay healthy. Did you know that **25% of the UK's morning traffic is linked to the school run**? There are lots of schemes and events to help your school community get moving and reduce the amount of cars on the road. You can find government guidance on school travel [here](#). And you might want to ask your council to make changes that make active travel easier and safer - like speed restrictions or introducing more cycle lanes.

**Step into Walk to School Week**

Every May, over 1,000 schools and nearly 300,000 pupils take part in Walk to School Week, working together to make as many active journeys as possible. Classes work together to make as many active journeys as possible: tracking progress on a classroom wallchart and individual activity diaries, and keeping things fun with daily stickers and end of week student rewards. Classroom packs are available too, with a range of age-appropriate curriculum-aligned activities.

**On your bike!**

Sustrans' **Big Walk and Wheel** happens every March and is the largest inter-school walking, wheeling, scooting and cycling event. It inspires pupils to make active journeys to school to improve their neighbourhood, plus there's prizes for the best active journeys.

Bikeability's **Cycle to School Week** takes place in September. This long event encourages families to try cycling and scooting - a great way to celebrate the huge benefits an active school can bring.

**Time to shine, with Modeshift STARS!**

**Modeshift STARS** is the national schools awards scheme recognising schools that demonstrate excellence in supporting cycling, walking and other forms of sustainable and active travel. The scheme encourages schools to join country-wide efforts to increase sustainable and active travel. Every school in England (outside of London) can participate in Modeshift STARS for free.

**Work your way through the accreditation scheme and get nominated for a Modeshift STARS award!**

Registered in England and Wales as a company limited by guarantee. Registered number: 05062574/Charity number: 1104153

**LET'S GO ZERO 2030**

**Energy: #3**

**Let's...install LED lighting!**

Switching to LED lighting is one of the simplest, most effective steps your school can take to become more sustainable. Traditional bulbs consume significantly more electricity, leading to higher energy bills and a larger carbon footprint. By upgrading to LEDs, you can cut lighting energy use by over 84%! Plus, LED bulbs have a much longer lifespan, meaning fewer replacements and less waste. There are a range of funded models if you don't have the capital to pay - we've listed some trusted suppliers below so you can start saving money and carbon in no time.

**Free LED survey with e Energy**

e Energy has a strong track record of helping schools switch to efficient LED lighting. They have lots of different funding models available, including the option to avoid upfront costs and pay monthly fee that your energy savings cover. And for schools signed up to Let's Go Zero campaign, they're offering a free in-person survey to see what works best for your school. Take a look at [this case study](#) from a Let's Go Zero Multi-Academy Trust to see the difference LED installation can make.

**TOP TIP:** There are lots of suppliers and funders working in this area - it is important to obtain multiple quotes and work with one you trust.

**It's a bright ideal!**

Lighting accounts for 20% of a typical school's energy costs. While the initial investment in LED upgrades may seem significant, it's one of the fastest and most effective ways to achieve cost savings in a retrofit. This graph highlights the rapid payback period for this energy-efficient upgrade.

**Cost Savings of 6.5W LED vs 60W Incandescent Bulb**

Click on the bulb to read an article about LED options for schools from a trusted supplier

Registered in England and Wales as a company limited by guarantee. Registered number: 05062574/Charity number: 1104153

## Closing Action: Sign up to Let's Go Zero



By joining our campaign, your school confirms that it is taking action and asks the government to do the same.

