



Biodiversity Climate Action Planning

Jenny and Simon – North West Regional Team

National Education Nature Park

NorthWestNaturePark@rhs.org.uk



Useful resource: The Nature Park 5 steps can help you to explore your school site for biodiversity. Your Climate Action Plan this year might focus on activities which help your pupils to 'Get to know your space'

More information:

<https://www.educationnaturepark.org.uk/how-it-works>

Activities to help you get to know your space:

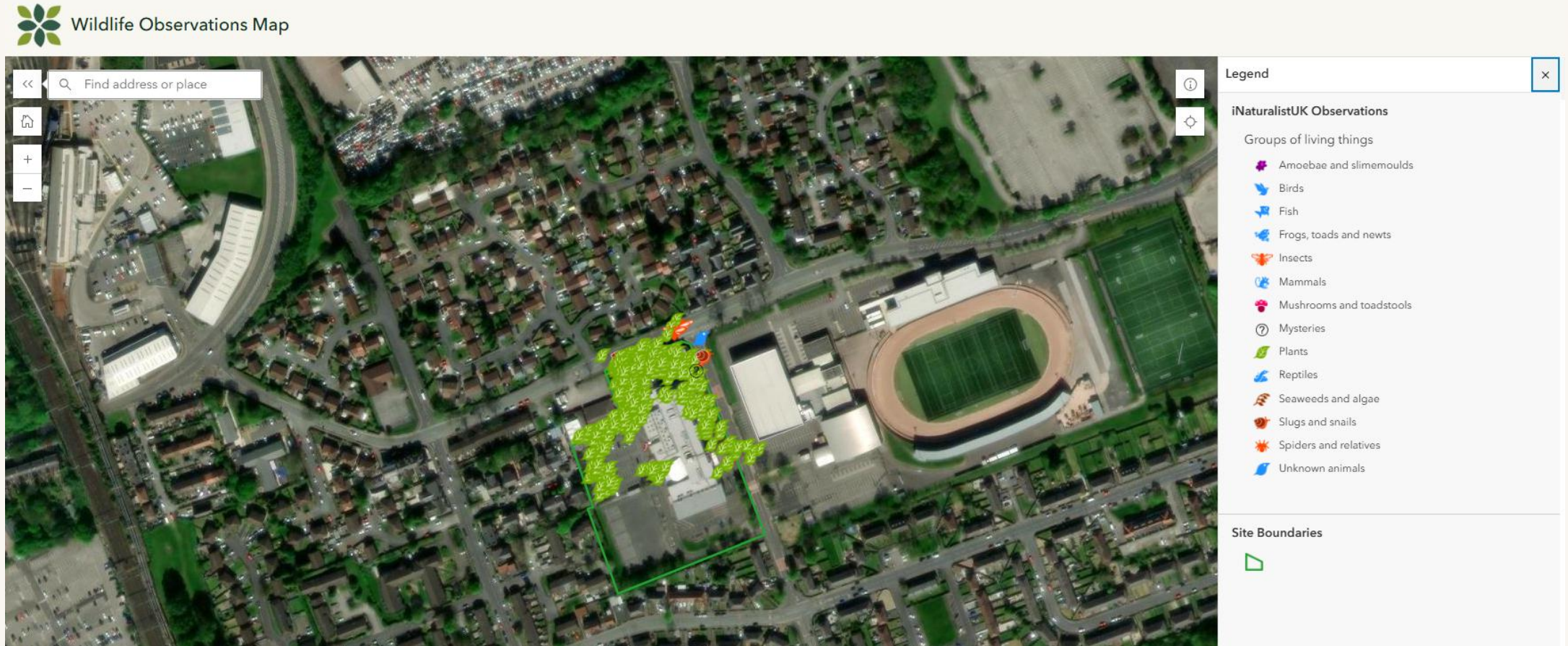
https://www.educationnaturepark.org.uk/resources/results?key_stage=All&topic=All&duration=All&step=step-1

Biodiversity co-benefits

- Wellbeing
- Water management
- Temperature management (heating/cooling)
- Real-life curriculum links
- Site-based research resource
- Transferable skills and career-linked experiences



Your school will have lots of biodiversity already!



Action idea: Use the Scientific community to help your pupils log and identify the biodiversity on your school site.

<https://www.educationnaturepark.org.uk/resource/record-wildlife-your-site>

Do you have any nature on your school site?

In 5 minutes, what can you find?

Take a photo of the biodiversity you find... it might be really tiny!



Action idea: Start exploring the biodiversity of your school site to find what you already have and create a baseline. Try the Hidden Nature Challenge
<https://www.educationnaturepark.org.uk/resource/hidden-nature-challenge>

Create a vision

*Imagine your school site
in the future...*

Action idea: Add some pupil voice into your Climate Action Plan with this vision creation activity
<https://www.educationnaturepark.org.uk/resource/vision-statement>

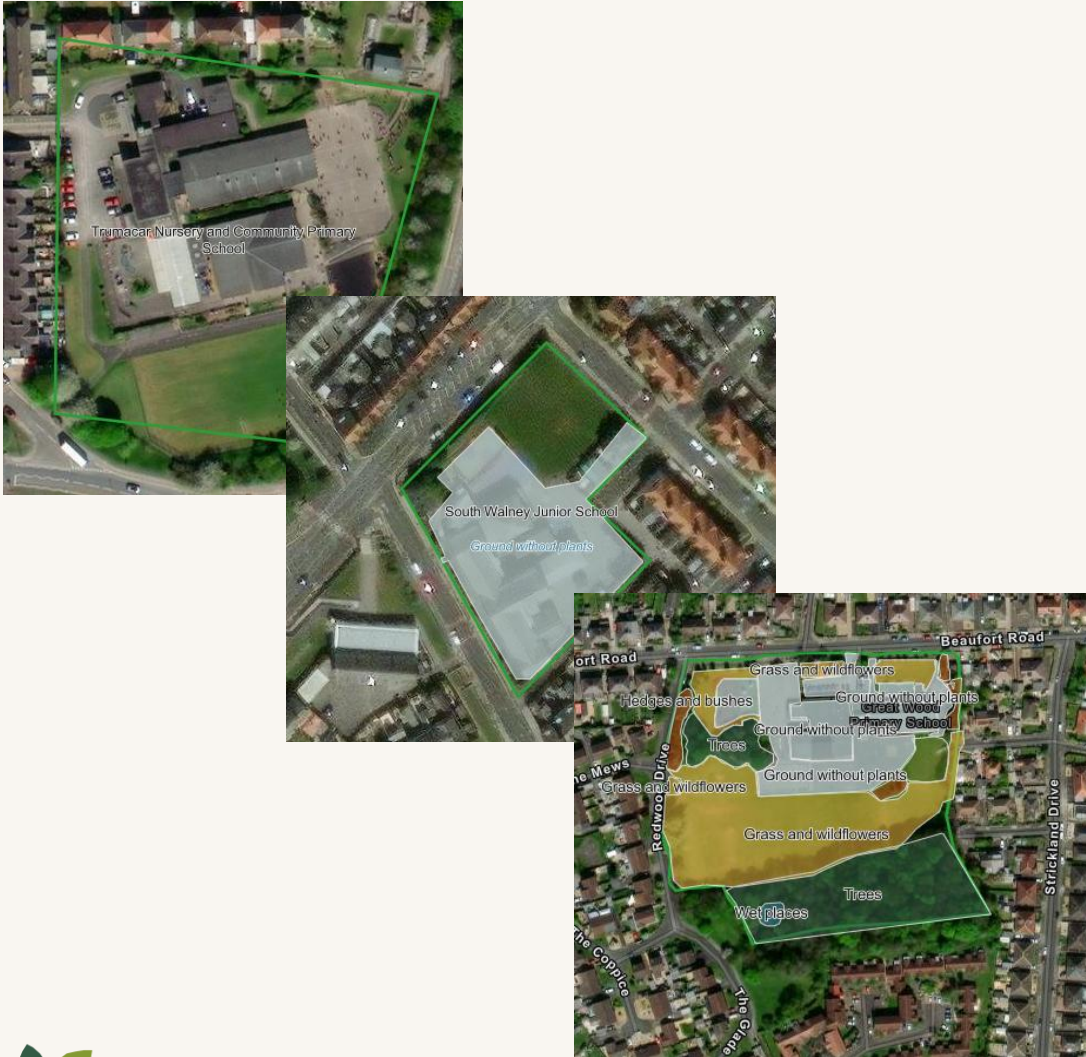


Biodiversity in your setting

- What biodiversity do you have on your school grounds? How do you know?
- What co-benefits might there be of increasing biodiversity and nature in your setting?
- What opportunities do your pupils have to learn in, and about nature?
- What additional support do you think your setting's community might need to help your habitats and biodiversity to thrive?



How habitat mapping can help with you Biodiversity pillar



- We have almost no information of what is on the school's estate in England with regards to habitats
- The information will support national data on habitats and biodiversity
- To make informed decisions on biodiversity improvements as part of a Climate Action Plan we need to know what is there to begin with

Action idea: Create a habitat map of your school site to celebrate the mosaic of habitats which make your school unique and to help pupils think of solutions which might help to make your school even better for biodiversity (SEE OUR TIPS ON THE NEXT SLIDE!!)

<https://www.educationnaturepark.org.uk/resource/mapping-your-site>

Habitat Mapping: Tips

Useful resource: The Nature Park activity to support you in mapping your habitats




<https://www.educationnaturepark.org.uk/resource/mapping-your-site>

- Do it bit by bit – perhaps each year could become a 'habitat expert' for one section
- Start with mapping - Grey spaces or Grasslands
- The digital map is easier on a desktop with a mouse
- Use copies of aerial images of Google Maps so your pupils can annotate the habitats they find 'in the field' – when your back in the classroom you can then add everyone's observations to the digital map
- 'How to Habitat Map' [support video](#) - with more live webinars in the new academic year



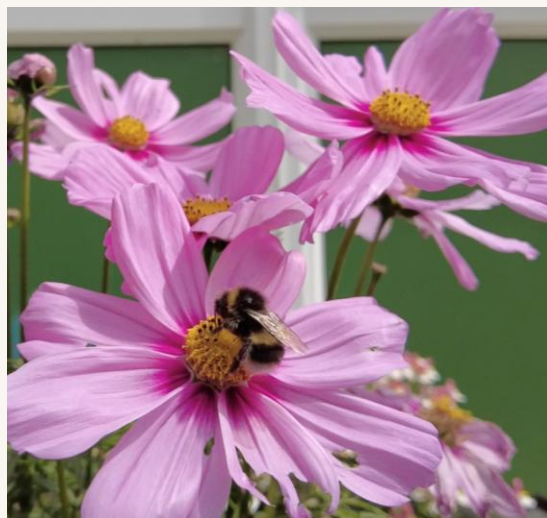
How is biodiversity being supported in your local area?



Reduce mowing regime in grass areas to allow grass to grow longer to support an increase in invertebrates	Plant the key food sources for the larval stage of species – eg, plant cowslips and primroses the Duke of Burgundy caterpillars before they become butterflies. 	Conserve standing deadwood to support woodland birds and bats.
Raise awareness in communities in the value of gardens for wildlife. 	Reduce the use of pesticides and herbicides	Create new food, shelter and nesting opportunities such as: nesting plots for birds, beetle banks, sowing bird and pollinator friendly seed mixes – <i>try Wildlife Friendly Gardens for simple habitat-project ideas that are cheap.</i>
Plant a species-rich hedgerow with climate resilient species, eg. hazel, blackthorn, bramble and honeysuckle (honeysuckle is particularly important where dormice could be present).	Plant broadleaf native trees in urban areas to build climate resilience through shading and cooling (eg, Alder, silver Birch, Elm, Lime, Field Maple)	Create ‘hedgehog highways’ (eg, holes in fences) to help hedgehogs move between spaces. 

Next steps

- What are your quick wins?
- What will you need help with/ who will you need help from?
- Set some deadlines for when you would like to do some of these actions by - for example:
Could you map your trees during National Tree Week?
- Interested in Habitat Mapping? Find out more with this webinar
<https://www.youtube.com/@EducationNaturePark>



Useful activity links and top tips:

- Get pupil voice into your Climate Action Plan for biodiversity by asking them to **Write a vision statement** – lovely activity to do after spending a few mins noticing nature outside <https://www.educationnaturepark.org.uk/resource/vision-statement>
- Activities to help you start exploring the habitats and biodiversity on your school site:
 - **Hidden Nature Challenge** – great for just starting to explore the nature on your site: <https://www.educationnaturepark.org.uk/resource/hidden-nature-challenge>
 - **Habitat Heroes** – lovely activity to help pupils to start thinking about the habitats needed for different wildlife to thrive: <https://www.educationnaturepark.org.uk/resource/habitat-heroes>
 - **Biodiversity Bar Charts** – great way to create a collective overview of the variety within your school (top tip: don't use treasury tags on a windy day!): <https://www.educationnaturepark.org.uk/resource/biodiversity-bar-charts>
 - **iNaturalist** – creates a photo record of the biodiversity on your site, and the Scientific community will verify pupil observations, giving names to species: <https://www.educationnaturepark.org.uk/resource/record-wildlife-your-site> OR use Seek <https://www.educationnaturepark.org.uk/resource/using-seek-app-identify-wildlife>
 - **Pollinator Count** – discover the pollinators visiting your site this summer, lovely activity which can be repeated every year and contributes to real Community Science campaigns: <https://www.educationnaturepark.org.uk/resource/pollinator-count>
- **Mapping your site:** <https://www.educationnaturepark.org.uk/resource/mapping-your-site> - we recommend starting with 'Ground without plants' and 'Grass and wildflowers'. Use printed aerial images with your pupils when you are outside, and then add all your observations and identifications to the map when you are back inside the classroom (when you have use of a mouse!)

Any questions – get in touch

Jenny and Simon, North West
Nature Park team

NorthWestNaturePark@rhs.org.uk

