

**Photography Competition 2024**

# Guidance

## A quick guide to the Ripple Effects Competition

The Bay: Ripple Effects is for young people aged 8-18, living and learning across The Bay.

We want to support young people getting outside to different blue spaces, hear what water means to them, and how human activity is affecting their local area, for better or worse.

In partnership with the Morecambe Bay Curriculum, Global Link, The Ernest Cook Trust (Blue Influencers Scheme) and local libraries, this competition invites young people from across The Bay to photograph water in their locality and produce a short, written reflection on what these spaces mean to them.

You can use this guide to help you take shots that can then be submitted to the competition.

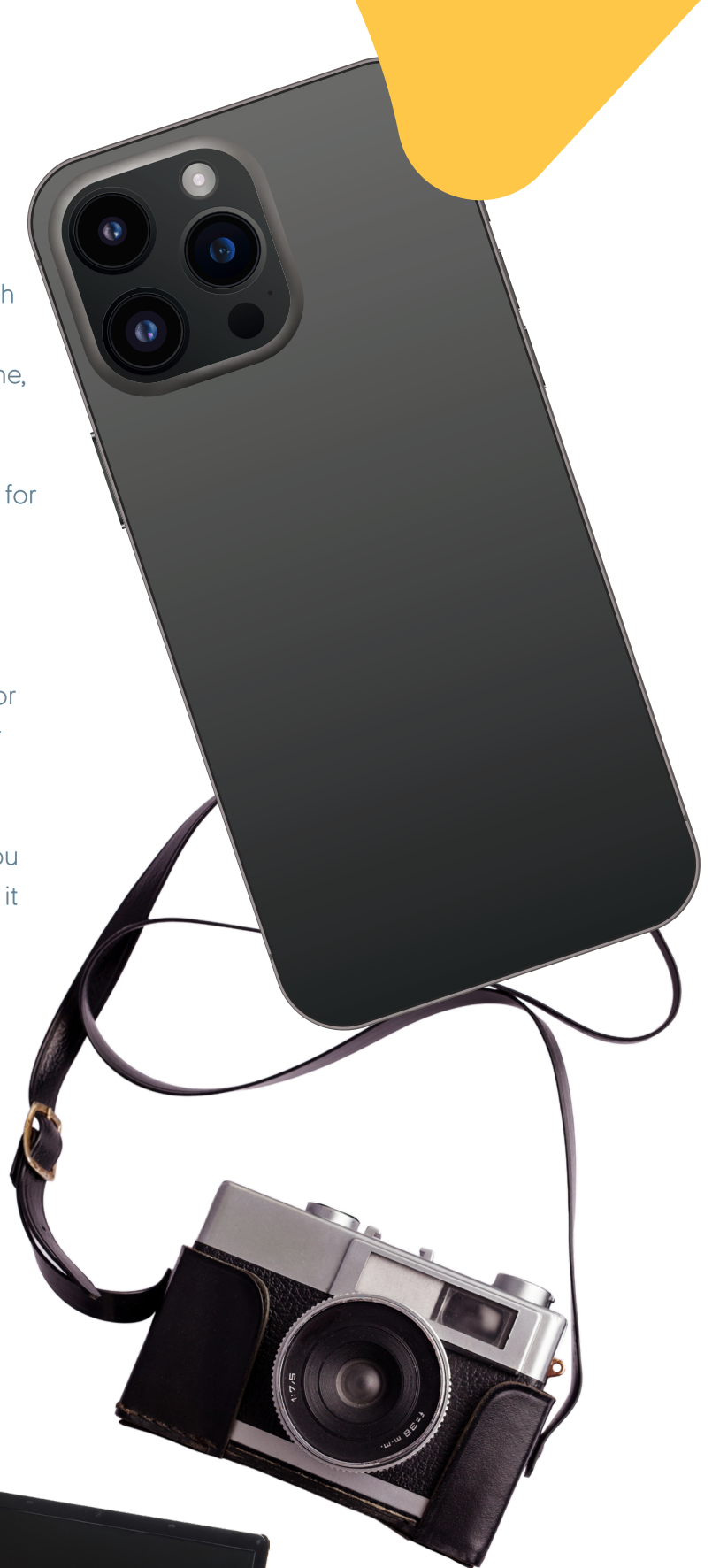
# Equipment

## What you will need.

The great thing about being in 2024 is that it's so easy to get hold of cheap tech that can take high quality digital photographs. If you don't have a fancy camera, but have access to a mobile phone, use that.

Here is a list of things you might want to consider for your shoot.

- A **camera** or **mobile phone** that can take pictures
- Some form of **stabilisation**, such as a tripod, or even a stack of books. A wall next to the river that you can lean on will also work.
- A **computer** to upload your image. Local libraries or your school can help with this if you don't have access to one at home. Or, just do it from a phone.



# Composition

## Planning your shot

All the best photographers think about what they are going to take before they shoot it. When you are planning your shot, you might want to think about the following.

### Focal Point

Think about the focus of your image. Having a clear focal point can sometimes help the viewer understand the message or meaning behind the image.

### Foreground & Background

Is your focus in the foreground? What does the background of your image look like? Generally, the cleaner or more out of focus the better (unless you want all of your image to be in focus).

### Framing

Have you tried using your phone or camera's grid? This can be a useful tool to find balance in the image or make it look more interesting. Try putting the focus of your image on the intersecting lines.

### Light

Consider the time of day you plan to take your shot. The more light, the better. Also, try taking the exposure up or down to see how that effects the overall look and feel of your image.

### Get Creative

Throw everything out of the window and get creative! Shoot on an angle, add extra visual interest to your shot, go underwater with a glass, get up close with a macro shot or distort your image by putting something in front of the lens, like a crystal ball!

### Editing

Sometimes adding a subtle filter or turning your image black and white can really enhance the overall look. Remember, less is more.





# Reflection

## What water means to you.

As well as a digital photograph, we would also like you to write a little bit about your image.

### Our Blue Spaces

Water is vital to life on Earth. It moves and gathers in many ways. From streams to rivers, canals, lakes and ponds, water makes us who we are, literally! Around 60% of you is made up of water.

### About The Bay

The Bay is a large estuary in Northwest England, just to the south of the Lake District National Park.

“This part of the coast represents the largest intertidal area in the UK and is one of the most biodiverse places in the country”. (Pollastri et al., 2023)

Five rivers (Leven, Kent, Keer, Lune and Wyre) drain into the bay with their various estuaries making several peninsulas within the bay. The Bay is also an important wildlife site, with abundant bird life and varied marine habitats.

### Human Action/Inaction?

Since the industrial revolution, humans have had a distinct impact on the planet, and not all of it good. Whilst technology and increased connectivity makes our lives easier, our need to consume more has a negative impact on our environment.

There is more plastic than ever in our waterways, sewage is being dumped directly into the sea, and intensive farming means that harmful chemicals enter the water system.

### Your Creative Written Reflection

We would like you to think about what water means to you, how it impacts your life and what your hopes are for the future of these areas?



## This competition takes inspiration from the photographic competition 'Ripple Effects: Exploring Water in Louisville'.

It has been developed in partnership with the Morecambe Bay Curriculum, Global Link, The Ernest Cook Trust (Blue Influencer Scheme) and local libraries.

For more information you can contact Blue Mentor, Anthony Briggs at Global Link – [a.briggs@globallink.org.uk](mailto:a.briggs@globallink.org.uk).



For more information and to submit your image and reflection, scan the QR code or use the website link below.

**[lancaster.ac.uk/morecambe-bay-curriculum/ripple-effects](http://lancaster.ac.uk/morecambe-bay-curriculum/ripple-effects)**