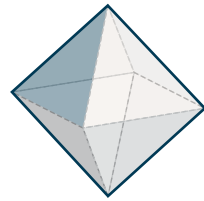


# Make your dice

with the 7 working principles



Cut line



Fold line



Glue tab

Be open and transparent about time, resources, and institutional constraints, and co-plan activities with communities to set realistic expectations and boundaries.

Maintain ongoing communication, recognise community values, and ensure that research relationships with communities and stakeholders are mutually beneficial rather than extractive.

Share power in decision-making, provide accessible and inclusive safe spaces, and ensure communities play an active role, not just participants, in research.

Develop a genuine understanding of communities and their past, present, and desired futures, while reflecting on your own positionality and assumptions as a researcher.

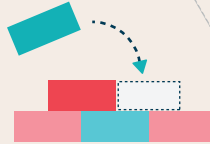
**Start with empathy, respect and reflexivity**



**Acknowledge and communicate limitations**



**Offer meaningful support and capacity building**



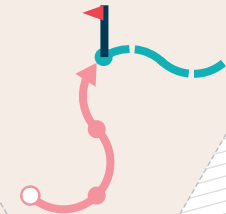
**Build trust through reciprocity and sustained presence**



**Recognise communities as co-drivers**



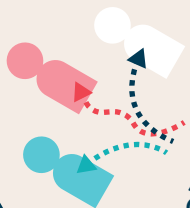
**Plan for post-research stage**



**What's missing?**  
Share how you work with communities inclusively and meaningfully



**Remain flexible and responsive**



Offer relevant resources, training, and recognition that empower communities, strengthen local capacities, and create lasting value beyond the project.

Adapt and adjust engagement ways to reflect community contexts, timelines, and priorities, allowing for iterative processes and diverse ways of participation.

Share power in decision-making, provide accessible and inclusive safe spaces, and ensure communities play an active role, not just participants, in research.

From the beginning, consider and co-design strategies for the project's long-term impact, maintain feedback loops, and ensure communities are left in a stronger position after the research.

Interested in shaping inclusive research principles or the graphic novel?

Contact Dr Nuri Kwon ✉ [n.kwon1@lancaster.ac.uk](mailto:n.kwon1@lancaster.ac.uk)