



UN Sustainable
Development Goals
at Lancaster University
2024/25





Contents

- 3** Introduction
- 4** Goal 1 - No Poverty
- 6** Goal 2 - Zero Hunger
- 8** Goal 3 - Good Health and Wellbeing
- 9** Goal 4 - Quality Education
- 10** Goal 5 - Gender Equality
- 11** Goal 6 - Clean Water
- 13** Goal 7 - Affordable and Green Energy
- 15** Goal 8 - Decent Work
- 16** Goal 9 - Industry, Infrastructure and Innovation
- 17** Goal 10 - Reduced Inequalities
- 18** Goal 11 - Sustainable Cities and Communities
- 20** Goal 12 - Responsible Consumption
- 21** Goal 13 - Climate Action
- 22** Goal 14 - Life Below Water
- 24** Goal 15 - Life On Land
- 25** Goal 16 - Peace, Justice and Strong Institutions
- 26** Goal 17 - Partnerships for the Goals

SUSTAINABLE DEVELOPMENT GOALS



Introduction

The United Nations 17 Sustainable Development Goals (SDGs) were developed in 2015 as a call to global action to overcome the world's biggest challenges – from hunger and poverty to equality and environmental action.

At Lancaster University, we are deeply committed to addressing the SDGs. It is embedded within our institutional purpose - to advance knowledge, wisdom and understanding through the excellence of our teaching and research. By engaging with others, we will use our collective intellectual and wider capabilities as a force for good and create positive economic, cultural, societal and environmental change.

Our mission is to foster sustainable development and create positive global impact by integrating these goals into every aspect of our work. This report highlights some of the ways in which we are making positive changes towards all 17 SDGs through our teaching, research, community engagement and the operational actions we take as an organisation.

As the challenges the world faces change, we believe that our innovative approach will drive sustainable results.

Professor Simon Guy

Pro-Vice-Chancellor Global
(Digital, International, Sustainability)





Goal 1 - No poverty

End poverty in all its forms everywhere

Research

Poverty stigma - Researchers from the Department of Sociology have worked with UK leading poverty charity Joseph Rowntree Foundation on poverty stigma and have produced a report that makes recommendations for effective action on poverty.

Poverty in Vietnam - Academics from Lancaster University Management School have looked at research that focuses on the effect income uncertainty has on the mental health of Vietnamese coffee farmers. The results found that mental illness and poverty are closely linked in these low-income countries.

Teaching

Austerity and poverty - We're committed to teaching about poverty and ways to improve life for others. For example, our Human Geography (BA Hons) degree, examines poverty, environmental challenges and inequalities and how this impacts human geography and displacement in the developing world.

Campus life

Lancaster Sanctuary Scholarships - Our Sanctuary Scholarship offers students who are refugees or have humanitarian protection the support and resources they need to integrate into our community here at Lancaster.

Student financial support - Students can access different grants or funds to help support personal development or assist with financial hardship from Lancaster University's Student Money Advice, which is a service that offers support on managing your money.

Free essentials - Each college at Lancaster has a Community Cupboard, where students experiencing financial difficulties can pick up free food and hygiene products. There are also five locations around campus, where students or staff can pick up free sanitary products. Lancaster University Students Union offers LUSU Pantry, to help Lancaster students and staff with free food and basic hygiene products during the cost-of-living crisis.

Outreach and engagement

Poverty public lecture - In September 2023, as part of the University's Public Lecture Series, Lancaster's Department of Economics hosted a lecture that examined how people can become stuck in poverty and discussed how we can work together to help end this.

Library Sanctuary Collection - Lancaster University Library has a collection of print resources developed in collaboration with local charity, Global Link Lancaster, to support the local refugee/asylum seeker community in developing English language skills. Members of the community can join the University Library via our Community Card scheme.





Goal 2 - Zero Hunger

End hunger, achieve food security and improved nutrition and promote sustainable agriculture

Research

Boosting food production - An international group of academics - including one from Lancaster University, have been looking into a more efficient use of phosphorus, which could see limited stocks of the important fertiliser extended to last more than 500 years and boost global food production to feed growing populations.

Nutrition in fish - Researchers in Lancaster Environment Centre working with an international group of academics have found that encouraging people to eat more wild fish, such as mackerel, anchovies and herring, which are often used within farmed salmon feeds, would benefit their nutrition and improve sustainable fishing.

Teaching

Food challenges across the globe - Our Geography (BSc Hons) degree includes a module called Food and Agriculture in the 21st century, which explores the social, political and environmental challenges facing food systems in the world today and will develop innovative and alternative solutions for the future.



Campus life

Sustainable food on campus - Lancaster University is committed to improving the availability and range of plant-based food options available across campus. Our recently updated Pendle Brew bar is 100% vegetarian and vegan, and HIVE café has many vegan and low-sugar options. We also commit to using sustainable, local suppliers wherever possible – with specific focus on Lancashire suppliers.

Reducing waste - Lancaster University has signed up to tackle food waste on campus by working with the Too Good to Go app, offering surplus food at a big discount. This scheme not only helps to save food from going to waste, it also helps students with the cost of living by offering discounted meals.

Outreach and engagement

Supper clubs - Free hot meals have been served to students at the Supper Club every week, hosted by the colleges and Lancaster University Student Union. Colleges also run various free food events throughout the year – such as breakfast social events and free lunches.

Pendle Brew café is a 100% vegetarian and vegan café on campus



Goal 3 - Good Health and Wellbeing

Ensure healthy lives and promote wellbeing for all and at all ages

Research

Using AI to predict outbreaks - Researchers from Lancaster Medical School have been working with the Department of Mathematics and Statistics to develop a ground-breaking new way of tracking and predicting outbreaks of infectious diseases within healthcare settings using AI and data.

Health research - Lancaster University is a partner in a £3 million project to deliver world-leading health and social care research training in the region. The Inspiring Students into Research Scheme (INSIGHT) will focus on training newly qualified health and social care professionals to understand research and use it effectively to underpin their practice.

Teaching

Mobile Simulation Teaching Unit - Lancaster Medical School has a new Mobile Simulation Teaching Unit - the first of its kind in England, to help train medical students, anaesthesia associates and NHS staff. The unit can be changed to simulate different medical environments such as a hospital ward or operating theatre.



Campus life

Green spaces and woodland trail - Lancaster University is set in 560 acres of parkland with more than 25,000 trees and a 2.6-mile woodland trail around the edge of campus for students, staff and the local community to enjoy time away from studies and work and relax in nature.

Wellbeing services - Lancaster University has specialist support services for both student and staff wellbeing. There are online resources, 24/7 mental health and wellbeing advice lines and in-person groups that staff and students can join.

Free activities - Each week, there are free activities on campus aimed at improving wellbeing for both staff and students. There is a weekly running club, a weekly wellbeing walk around campus taking in parts of the woodland trail and a weekly dance class, all designed to have fun and make friends.

Outreach and engagement

Health partnership - Lancaster University and University Hospitals of Morecambe Bay NHS Foundation Trust have signed a commitment to work more closely for a joined-up approach to initiatives which help improve the lives of local people.

Life skills for schools - Staff and students from Lancaster Medical School went out into Lancaster to promote healthy living and teach basic life support to children from five local primary schools. The medical students worked in small groups with the support of GP tutors on three topics: diet and exercise, drugs and alcohol and the heart and CPR.



Goal 4 - Quality Education

Ensure inclusive and equitable quality education and promote lifelong learning opportunities for all

Research

Inspiring the next generation - Human Computer Interaction scientists at Lancaster University have worked with researchers in Glasgow to inspire the next generation of plant scientists with educational resources that transform existing plant science curriculum into an engaging and interactive subject for classroom learning.

Teaching

Gold standard for teaching - Lancaster University was awarded overall Gold rating in the Teaching Excellence Framework (TEF) 2003. This means that the student experience and student outcomes are typically outstanding.

Outreach and engagement

Morecambe Bay Curriculum - A community-curated, place-based approach to learning about sustainability - encouraging and empowering children and young people to become the change-makers and innovators our planet needs. As part of the Morecambe Bay Curriculum, new teaching resources were launched, co-designed by more than 40 teachers and researchers. The new resources merge cutting edge research with best practice teaching, to embed sustainability and place in curriculum teaching in primary and secondary schools and FE Colleges. Our Library also has a Morecambe Bay Curriculum Collection of fiction and non-fiction books for early years and primary aged children focused on the themes of sustainability and the environment. The collection is available to community members of the Library, and a book box scheme is available to local schools.

The Lancaster Award - Developed in partnership with employers, The Lancaster Award recognises students for taking part in extra-curricular activities to acquire new skills valued by employers that enhances their future job prospects.



Library and Information Literacy Programme -

The Library and Information Literacy Programme is designed to help students, researchers and staff to learn information literacy skills, develop a critical approach to dealing with information and to make the most of the physical and digital library. Information Literacy incorporates a range of knowledge, skills and abilities across a wide spectrum of activities including how to identify, search for, collect, organise, evaluate, analyse, present and communicate information.

Campus in the City - Campus in the City is a three-day festival that took place in April 2024 across various locations in Lancaster and Morecambe showcasing Lancaster University research projects to the local community and families. The festival aims to inspire children by demonstrating research ideas through games and challenges.



Goal 5 - Gender Equality

Achieve gender equality and empower all women and girls

Research

Gender equality in business schools - The Academy for Gender, Work and Leadership in Lancaster University Management School is a dynamic research area focused on exploring and tackling gender inequalities in work and organisational contexts. With a range of projects across multiple areas, exploring themes including gender dynamics in family business, and gender equality in Business and Management Schools, our academics are identifying solutions to key issues across the world.

Teaching

Gender equality - Gender equality is embedded across the curriculum at Lancaster University. For example, our Film and Creative Writing (BA Hons) degree has a module on Women Film Makers, that explores the work of some of the most historically important female filmmakers from the 1890s through to the present day, considering films from around the globe. Our Sociology (BA Hons) degree has a module on Gender Studies, which explores the gendering of identities, relations and institutions and the links between gender and power.

Campus life

Athena Swan - The Athena Swan Charter is a higher education programme for the advancement of gender equality. We have been members of the Athena Swan Charter since 2008, achieving awards at university, faculty and departmental level. Lancaster University has held an institutional level Bronze award since 2008, with renewals in 2012, 2014 and 2019. The Department of Physics, Lancaster Environment Centre and Faculty of Health and Medicine continue to hold Silver awards with the Department of Psychology achieving Silver in 2024.

Lancaster University Women's Network - Established in 2018, the Lancaster University Women's Network supports women at the University by providing a forum for

empowerment, discussion and individual development as well as a platform for debate, awareness raising and to facilitate action for change. They offer targeted development activities and events for women including training, mentoring and support. There are also LGBTQ+ and parents' and carers' staff networks which also contribute to improving gender equality within the University.

Library family room - Lancaster University Library has developed a dedicated family-friendly study space to support students with caring responsibilities. The enclosed space has been designed for users with children up to 12 years old in mind, to enable parents to work alongside their children.



Goal 6 - Clean Water

Ensure availability and sustainable management of water and sanitation for all

Research

Flood mitigation - The University's Lancaster Environment Centre has specific expertise in flood modelling and mitigation measures. Recent research into flood modelling and mitigation measures was included in a key report for the House of Lords on Natural Flood Mitigation schemes.

Windermere survey - Led by scientists at Lancaster University and the Freshwater Biological Association, the Big Windermere Survey is conducted every year to investigate water quality in Windermere, England's largest natural lake. Water samples collected during the survey are analysed for the concentration of bacteria and of nutrients, including phosphorus.

Water technologies - A Lancaster University-led research project developing new technologies to remove dissolved carbon from drinking water has won £450,000 from The Water Services Regulation Authority (Ofwat) innovation competition. The researchers' technology aims to remove more than 90 per cent of the dissolved organic compound from even the most polluted of waters, compared with around 70% removal using current methods.

Teaching

Water management - Our degree options run through The Lancaster Environment Centre, focus on teaching about global challenges such as climate change, sustainable development, resource provision, and natural hazards. For example, our Environmental Science (BSc Hons) degree has a module on Water Resources Management, that focuses on the technologies available to treat wastewater, the approaches used to assess chemical and biological water quality, and the links between agricultural and urban development and water quality.

Campus life

Water for all - Lancaster University is committed to making free drinking water accessible for students and staff and there are a number of water fountains across campus plus free tap water available in all our food outlets.

Every year, Lancaster University scientists help with the Big Windermere Survey, to track water quality in the lake



7 AFFORDABLE AND CLEAN ENERGY



Goal 7 - Affordable and Green Energy

Ensure access to affordable, reliable, sustainable and modern energy for all

Research

Expert advice - Lancaster University researchers are to work with members of the public and policymakers to understand how the UK can reduce its demand for energy, as part of a new £15 million 'Energy Demand Research Centre' funded by the Engineering and Physical Sciences Research Council (EPSRC) and the Economic and Social Research Council (ESRC), part of UK Research and Innovation (UKRI).

Power systems - Researchers in the School of Engineering are part of a project to look at developing autonomous power and energy systems modelled on the self-organisation of living systems. The research will support the autonomous operation of modern power grid systems to achieve self-maintenance, self-healing, and self-reconfiguration capabilities.

Floating solar panels - Researchers from Lancaster have been working on a project that looks at the potential of floating solar photovoltaic panels on lakes to provide electricity globally. Their research found that the solar panels could supply all the electricity needs of some countries such as Papua New Guinea, Ethiopia and Rwanda.

Teaching

Green energy - Our Environmental Science (BSc Hons) degree has a module on Energy and the Environment, that focuses on each of the key energy technologies, learning how to detail its importance, its forms and uses and its cost and environmental impact, whilst looking at future solutions to sustainable energy demands.

Campus life

Wind turbine - The wind turbine on our campus has generated between 4,000,000 and 5,000,000 kWh of electricity. Catering for around 14% of the University's electricity consumption each year, the wind turbine has produced enough electricity to power over 1,200 homes for a year.

Net zero project - Already one of the highest producers of renewable energy out of all UK universities, Lancaster University is investing a further £57 million to decarbonise the Bailrigg campus. There are two projects – a solar PV farm and a low carbon energy centre, that will take the University significantly closer towards achieving 'net zero' carbon emissions from electricity and heating by 2030.

Lancaster University is investing a further £57 million to decarbonise the Bailrigg campus



Goal 8 - Decent Work

Promote sustained, inclusive and sustainable economic growth, full and productive employment and decent work for all

Research

The Work Foundation - The Work Foundation is a leading think tank, based in Lancaster University Management School, looking at improving work in the UK. New research recently looked at insecure work and how this could lead to being unable to pay an unexpected bill. The analysis showed that women, young people, ethnic minority workers, and disabled workers are disproportionately likely to be in an insecure job.

Sustainable tourism - Tourism businesses from across Lancashire gained advice for improving their sustainability and accessibility practices and policies from Lancaster University Management School academic and research experts in The Pentland Centre, a research centre looking at sustainability within business.

Health and safety - Lancaster Professor of Organisations, Work and Health Stavroula Leka is leading research to improve access to occupational safety and health services worldwide. With a safe and healthy working environment now recognised as a fundamental principle and right at work, the research will look at how it can be improved across the globe.

Teaching

Sustainable business - Many of our degree options at Lancaster University Management School teach sustainable and ethical business practices to inspire future leaders of industry. For example, our Management and Human Resources (BSc Hons) degree has a module on Business Ethics and another module on Global Corporate Social Responsibility.

Campus life

The Careers and Employability Service - Lancaster's Careers and Employability Service is available for specialist career advice, exploring study options, career events and work experience opportunities. Our CV360 portal allows students to upload their CV to receive personalised insights into how to improve it – from spelling and grammatical changes to tips on including skills.

The Employment and Recruitment Service (ERS) - This is a recruitment agency run by Lancaster University that offers a wide-range of on and off campus jobs for students and graduates. The ERS advertise a range of part-time, casual and temporary positions at Lancaster University and within the local community. These opportunities range from fixed hours position of up to 12 weeks in duration to casual roles with ad-hoc hours on a longer-term basis.



Goal 9 - Industry, Infrastructure and Innovation

Build resilient infrastructure, promote inclusive and sustainable industrialization and foster innovation

Research

Family businesses - Lancaster University Management School recently held The Family Business Research Conference, that brought together academic experts and business practitioners to address key challenges facing family firms. The conference focused on themes of how family businesses navigate crisis, complexity, and uncertainty; and how they respond to social, economic, environmental, and technological change.

Innovation in fundraising - A revolutionary new type of fundraising app has been developed by a technology business building on research by computer scientists at Lancaster University. The innovative app uses real-time data to enable the East Anglian Air Ambulance charity's supporters to give micro-donations each time the crew are tasked to somebody experiencing a medical emergency.

Business challenges - Lancaster University Management School hosted its inaugural AIMday (Academic Industry Meeting day). It brought together business leaders and academic experts to address some of the most pressing issues affecting companies across North West England, including how to encourage sustainable activity across supply chains; how to measure and improve sustainability credentials; and how to combat greenwashing.

Teaching

Sustainable computing - The new Cyber Security (BSc Hons) degree is designed for the cyber security systems engineers and architects of the future. The course has a module called Sustainable Computing, focusing on key concepts associated with creating sustainable computing and how computers can shape a greener economy and society.

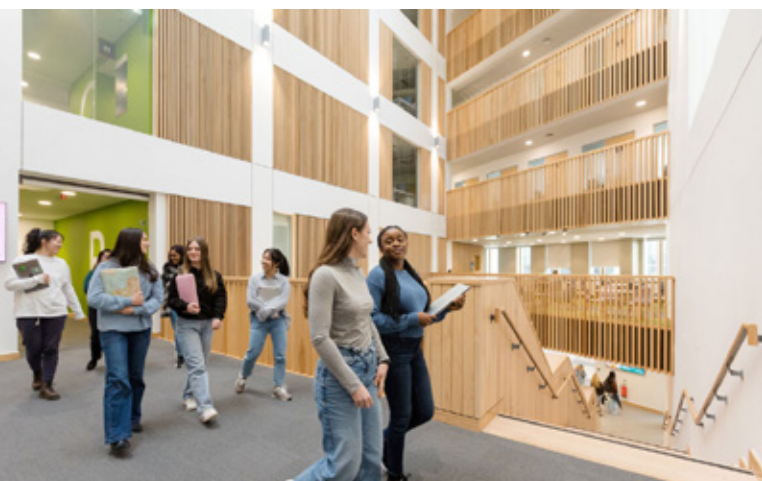
Campus life

Construction - From 2023 onwards, the University has committed to significantly less construction of new buildings, and more focus on repurposing existing buildings and upgrading them to be more energy efficient and better suited for purpose.

Outreach and engagement

African innovation partnerships - Lancaster University has launched major new research and innovation partnerships with African nations. The Africa Research and Innovation Partnership (ARIP) aims to help academics from those countries, work effectively together to deliver sustainable solutions to global challenges, using local knowledge and expertise.

From 2023 onwards, the University has committed to significantly less construction of new buildings, and more focus on repurposing



Goal 10 - Reduced Inequalities

Reduce inequality within and among countries

Research

Social housing health - Lancaster University researchers have helped to evaluate an indoor air quality campaign to improve the health of children living in social housing. The campaign is in collaboration with one of North West England's leading housing providers, Torus with the aim of creating an innovative pilot that focused on the respiratory impact of indoor air quality while empowering social tenants in their homes.

Educational inequalities - Lancaster University researchers have contributed to a major report which highlights how a failure to address childhood inequality is creating a 'conveyor belt of disadvantage.' The Child of the North report highlights groundbreaking projects in the North of England that showcase the power of working collaboratively and resource sharing to achieve transformational changes on pupils' educational achievement and lives.

Teaching

Social Work - Reducing inequalities is a theme that is embedded into many Lancaster degrees. For example, our Social Work (BA Hons) degree has a module on Contemporary Social Problems that looks at how contemporary social problems reflect and reproduce economic and social inequalities and how those inequalities are constructed through different welfare ideologies and approaches.

Campus life

Equality, Diversity and Inclusion (EDI) - Lancaster University's commitment to create an environment where everyone can thrive and fulfil their potential is demonstrated by initiatives linked with recognising and supporting protected characteristics including age, disability, gender identity, race, religion and sex and sexual orientation in alignment with the Equality Act 2010. There are several EDI-related networks and associations at Lancaster University for staff and students to connect, share best practice and network.

Mentoring - As part of the University's work towards the Race Equality Charter, senior staff have partnered with students from racially minoritised backgrounds as part of a reciprocal mentoring programme, sharing insights, perspectives and understanding to help to highlight and tackle inequalities.

Lancaster Success Programme (LSP) - The University offers a programme of activities to enable students from widening participation backgrounds to thrive during their studies and successfully progress into graduate employment or postgraduate study. The LSP is designed to support students from backgrounds that are traditionally underrepresented at university, who may not always be aware of the breadth of support and opportunities available to them.





Goal 11 - Sustainable Cities and Communities

Make cities and human settlements inclusive, safe, resilient and sustainable

Research

Sustainable transport - Lancaster University researchers from the Centre for Social Futures are part of a £7.8million five-year programme to work with communities, local authorities, businesses and interest groups in Leeds, to develop alternatives to car ownership to meet the transport and mobility needs of the future.

Empower residents - Researchers from Imagination Lancaster, a design-led laboratory at Lancaster, have created an exciting and sophisticated new mapping technology enabling future generations to get involved in creating their own future cities. Using game technology, it helps to create more interest from the public in how their local community is run and built.

Resilient Cities - Our Future Cities Research Institute is a joint partnership between Lancaster University and Sunway University in Malaysia. One area of research they focus on is resilient cities and how to make cities as well as communities and citizens more resilient, agile and adaptable to climate change and other global challenges, such as future pandemics.

Teaching

Sustainable cities - Our Human Geography (BA Hons) degree, has a module called Society and Space that focuses on the interactions between society and space, and between people and places at a variety of spatial scales and in different parts of the globe.

Campus life

Bike hire scheme - Lancaster University's bike hire scheme, offers students the convenience of cycling without the expense of owning their own bike, or the hassle of cycle maintenance. Students can rent termly, with all equipment and maintenance included so they can enjoy riding their bike to and from campus with ease.

Outreach and engagement

Wind Turbine Community Benefits Fund - Each year, the Lancaster University Wind Turbine Community Benefit Fund allocates up to £20,000 to Lancaster District-based not-for-profit organisations, charities, trusts, community groups or voluntary organisations to support sustainable projects, large and small. The funding really makes a difference to the local area, whether that's through funding new charging points for electric vehicles or contributing towards refurbishment projects to improve energy efficiency.





Goal 12 - Responsible Consumption

Ensure sustainable consumption and production patterns

Research

Experts in waste - Lancaster University Management School hosted the Opening the Bin 3 conference that assembled some of the world's leading experts to share best practice waste issues. Social science and humanities academics, in company with industry practitioners from Kenya and Lancashire, discussed issues ranging from ocean plastics to the circular economy, household recycling behaviour, waste work to waste disposal regulation.

Laboratory Efficiency Assessment Framework (LEAF) - Thirteen research and teaching labs at Lancaster have been accredited with the Bronze LEAF award so far, which recognises sustainability in waste, people management, and purchasing.

Soil hotels - Lancaster University researchers along with the Environment Agency and other university partners are working to tackle the amount of soil that finds its way into landfill each year with a series of policy recommendations and the introduction of a soil reuse and storage system, including soil 'hotels' and 'hospitals'. Soil is a limited, non-renewable resource and underpins a plethora of vital ecosystem services essential to climate control, water quality, nutrient cycling and more.



Teaching

Consumer culture - Responsible consumption and sustainable behaviour is embedded into teaching modules across the University. For example, our Sociology (BA Hons) degree has a module on Consumer Culture that looks at advertising and how this impacts consumption behaviour and shopping culture.

Campus life

ReStore Lancaster - ReStore Lancaster is a partnership between Lancaster University and local charity, St John's Hospice. The sustainable shop is a combination of a charity shop with donated items for sale, alongside selling affordable and eco-friendly products to the campus community.

Don't Ditch It - Every year the Don't Ditch It project collects unwanted items from students across campus and diverts them from landfill to be repurposed and resold in our ReStore Lancaster shop. New students or returning students are then able to buy preloved home items, donated by students, at a heavily discounted price.

Preloved books - Lancaster University Library uses companies including Anybook and Better World Books to resell or recycle withdrawn library stock. Students can also find free books around campus at our book swap areas.

Thirteen research and teaching labs at Lancaster have been accredited with the Bronze LEAF sustainability award



Goal 13 - Climate Action

Take urgent action to combat climate change and its impacts



Teaching

Climate emergency teaching - All our degree options run through The Lancaster Environment Centre, focus on teaching about global challenges such as climate change, sustainable development, resource provision, and natural hazards. For example, our Ecology and Conservation (BSc Hons) degree runs field trips to places such as the Doñana National Park in Spain to identify and learn about endangered wildlife and plants.

Campus life

Net-zero commitment - Lancaster University is one of the highest producers of renewable energy out of all UK Universities, and since 2005 we've reduced our electricity and heating emissions by 50%. We know there's more we need to do, that's why we're committed to becoming carbon net zero by 2035.

Travel decision tree - Lancaster Environment Centre (LEC) have developed a travel decision tree to assist with decision-making about travel modes and alternatives to business and academic travel across the University. We implemented this with our business travel team to help to people consider more sustainable travel options.

People and Culture Plan - We have embedded our commitment to the climate emergency within our People and Culture Plan, creating positive change through new ways of working and our staff experience.

Research

Glacier tracking - A research team involving scientists at Lancaster University have been using satellites to track the Cadman Glacier, on the west Antarctic peninsula, to see how climate change is impacting the decline of the glaciers. By analysing historic satellite data, the scientists believe warmer ocean waters gradually thinned the glacier's ice shelf from the early 2000s and possibly since the 1970s.

Sensing danger - From the perils of icebergs and hurricanes to the power of space weather and the devastation of forest fires, Lancaster University researchers have been working for decades to detect and anticipate shifts in the natural world. Through techniques such as remote sensors, mathematical skills and data science, our scientists are learning more about changes taking place in some of the most beautiful and remote places on the planet.

We're committed to becoming carbon net zero by 2035



Goal 14 - Life Below Water

Conserve and sustainably use the oceans, seas and marine resources for sustainable development

Research

Coral Reefs - Researchers from Lancaster Environment Centre have found that planting new coral in degraded reefs can lead to rapid recovery – with restored reefs growing as fast as healthy reefs after just four years. Researchers studied reefs in Indonesia to assess whether coral restoration can bring back the important ecosystem functions of a healthy reef.

Blue economy - Researchers from across the University have been working together to investigate and map regional 'blue businesses and the blue economy' – businesses that have marine economic activity in Lancashire, with the aim to help improve business practices and increase sustainability in these areas.

Seafood Business for Ocean Stewardship (SeaBOS) - The Pentland Centre Director, Professor Jan Bebbington from Lancaster University Management School is working with Stockholm Resilience Centre on the SeaBOS project. The collaboration seeks to identify and work in partnership with organisations in the seafood industry to achieve a step change in sustainability performance.

Teaching

Aquatic life - Our Earth and Environmental Science (BSc Hons) degree has a module on Aquatic Biogeochemistry, where students learn about the chemical composition of aquatic systems in nature – and how to look after them.

Campus life

Food on campus - We don't serve any fish from the Marine Conservation Society's 'fish to avoid list' in any of our food outlets on campus.





Goal 15 - Life on Land

Protect, restore, and promote sustainable use of terrestrial ecosystems, sustainably manage forests, combat desertification, and halt and reverse land degradation and halt biodiversity loss

Research

Solar farm biodiversity - Scientists from Lancaster Environment Centre are part of a project to look at the impact of solar farms on biodiversity. The project aims to demonstrate how solar farms could boost pollinator biodiversity compared to traditional farmland and provide recommendations for future solar farms to maximise biodiversity.

Amazon biodiversity - Researcher, Dr Leonardo de Sousa Miranda of Lancaster Environment Centre, is the winner of the 2023 Ramboll Foundation Award and a prize of 67,000 Euros. The funding will support his research of identifying priority areas for biodiversity conservation and habitat restoration in the Brazilian Amazon and assessing climate and land-use change impacts in the world's largest rainforest.

Work in Africa - Lancaster Environment Centre have held a workshop in Ghana focussed on land use, land use change and forestry in Sub-Saharan Africa. The workshop provided a platform for policy makers and researchers to interact and identify priority areas where research could make the most impact and affect lives and livelihoods positively.

Teaching

New plant labs - A funding grant of almost £1m will help deliver new plant science research facilities at Lancaster University. The funding will be used to set up new facilities at Lancaster Environment Centre (LEC) to study how plants respond to different environmental conditions and inspire the next generation of plant scientists.

Campus life

Green Flag Award - Lancaster University's Bailrigg campus has received the Green Flag Award for the thirteenth year in a row – the international benchmark for the quality of green spaces.

Hedgehog Friendly Campus - Our Bailrigg campus is 'Gold Accredited' by the national Biodiversity Programme; Hedgehog Friendly Campus. The campaign is coordinated by the British Hedgehog Preservation Society (BHPS) and assesses institutions across the Higher Education sector, recognising sustainable processes and practices that protect hedgehogs and allow them to thrive.

Tree planting - Each year, student volunteers alongside the University Grounds and Maintenance team work together to plant thousands of Spring bulbs and trees across campus. This year so far, over 13,000 bulbs have been planted and over 2,000 new trees.

*We are a gold accredited
Hedgehog Friendly Campus*



Goal 16 - Peace, Justice and Strong Institutions

Promote peaceful and inclusive societies for sustainable development, provide access to justice for all and build effective, accountable and inclusive institutions at all levels

Research

Family justice - A research grant awarded to a Lancaster University professor will establish a new Centre of Excellence to improve safeguarding outcomes and aspects of the Family Justice system. The project outputs will include a new model for global safeguarding protocols, a toolkit for improving access to justice and listening to family voices in the family justice system, and new tools to improve children's online safety.

Cyber security - Security Lancaster is one of the largest interdisciplinary security research institutes in the UK with 120 staff from 15 academic departments. The institute brings together people from government, business, academia and the protection industries to create new perspectives on security, innovation and responsible entrepreneurship in a rapidly changing world.

Teaching

Peace studies - We're committed to teaching about fairer societies and ways to improve life for others. For example, our Peace Studies and International Relations (BA Hons) degree, examines peace and conflict resolution, human rights and how sustainability and global changes will impact societies.

Campus life

Number one for Sustainability Governance - Lancaster University is ranked joint first in the world for Sustainability Governance in the QS World University Rankings: Sustainability 2024. The Sustainability Governance category measures transparent financial reporting, student representation for sustainability at a senior level, and support and promotion of a holistic and ethical culture.

Sustainable investment - Following our declaration of the climate emergency, the University has taken further steps in its commitment to sustainability by transferring all its

managed investment portfolios to two new funds designed to have a positive impact on people and the planet.

Outreach and engagement

Law in schools - Lancaster University Law School ran a fun outreach day for local primary schools. The children learnt about the law, engaged in legal skills activities and then, working in small teams, completed a fun game based around their learning.

Pop up law clinic - A pop-up, free, legal advice centre, run by Lancaster University Law School took place in the Central Library in Blackpool, UK. In addition to providing legal advice to clients attending the Pop-Up Clinic, the Law School is also running a research project which seeks to identify any specific challenges the community may face in accessing legal services and to better understand how to target unmet legal needs in communities.





Goal 17 - Partnerships for the Goals

Strengthen the means of implementation and revitalise the Global Partnership for Sustainable Development

Research

Sustainability collaboration - A joint research conference between Lancaster University Management School, UK and Sunway Business School, Malaysia has sown the seeds of future collaboration and meaningful impact in sustainability research. The Collaborating Together conference aimed to showcase staff research, encourage and strengthen research collaborations between the Schools, provide a platform to share ongoing research and identify areas for future joint research-funded initiatives.

Global teaching partnerships

Lancaster is constantly developing partnerships across the world to ensure it delivers teaching that takes students to the frontiers of knowledge and produces graduates who can compete in a global job market. In addition to numerous international research partnerships, Lancaster has five strategic **overseas teaching partnerships**. Lancaster degrees are offered in the UK, China, Germany, Ghana, and Malaysia – as well across the globe online. Our newest strategic overseas partnership, based in Indonesia, currently offers foundation programmes and will offer Lancaster degrees in 2025.

- Lancaster University Leipzig, Germany offers Lancaster undergraduate and postgraduate degrees, as well as partner delivered foundation and pre-master's programmes.

- Lancaster University Ghana offers Lancaster undergraduate programmes and a partner delivered foundation programme. The campus also facilitates research opportunities in the region.
- Lancaster University College at Beijing Jiaotong University, China is a joint institute that allows students to receive degrees from both institutions with separate academic transcripts.
- Sunway University, Malaysia is an academic partnership where students can study on a range of undergraduate and postgraduate degree programmes and graduate with a degree from both universities. It is also home to Lancaster and Sunway's Future Cities Research Institute.
- Deakin University Lancaster University Indonesia is a novel partnership between two universities to establish an innovative joint branch campus in Bandung, Indonesia. It will allow students to gain a globally recognised degree from each institution. Currently the campus offers a partner delivered foundation programme.

Global experiences

Coming to Lancaster is all about broadening your horizons, learning new subjects, finding new perspectives and discovering new experiences as part of a community that reaches around the world. We have students from over 100 countries, so

students have every chance to make international connections, on their course, in societies or socially.

Students might spend a few weeks abroad as part of their course, or even study for a whole year with one of our partner institutions around the world.





lancaster.ac.uk