

CLIMATE AMBASSADORS
In association with EAUC, STEM Learning and the University of Reading



Morecambe Bay Curriculum Climate Action Plan (CAP)

School

Sustainability lead



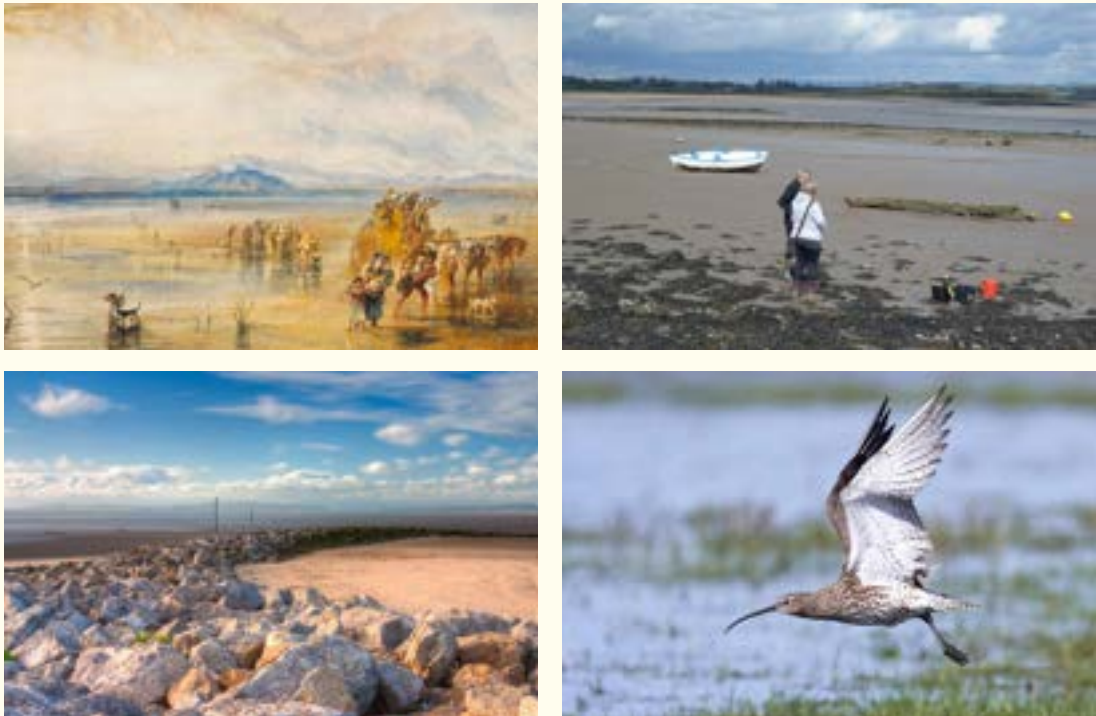
A Climate Action Plan (CAP) is a detailed plan to enable an education setting, or trust, to progress or commence sustainability initiatives. It allows education settings to take a structured and strategic route toward ensuring they are acting for, and educating about, sustainability. The CAP can sit within an individual setting, across a trust, or both. It is important that the whole education setting, or trust, is engaged when creating a CAP so that planning becomes action.

Creating a climate action plan will allow you to take a structured and strategic route toward ensuring your setting is acting toward, and educating, sustainability. You may choose to have a climate action plan that sits within an individual setting, across a trust, or both.

A holistic climate action plan should cover the following 4 areas:

- decarbonisation, for example calculating and taking actions to reduce carbon emissions, such as becoming more energy efficient.
- adaptation and resilience, such as taking actions to reduce the risk of flooding and overheating.
- improving the environment and biodiversity.
- climate education and green careers, such as ensuring the education you provide gives knowledge-rich and comprehensive teaching about climate change, and that your teaching staff feel supported to offer this.

This climate action plan resource includes the contacts of local organisations working in Morecambe Bay who can provide place-based support, knowledge and resources.



Thank you to Lancaster University for kindly funding the MBC Conference and this Climate Action Plan template. Sustainability is at the heart of Lancaster University, and having scored joint fourth in the world for sustainability governance, we understand the importance of designing and delivering climate action plans that tackle the world's greatest environmental challenges. Lancaster University is proud to be a civic university, and we are committed to using our collective knowledge and expertise as a force for good across the region.



Let's Get Started

- Start an Eco group using the Eco Schools framework. eco-schools.org.uk/ten-topics
- Appoint a sustainability lead with sufficient PPA to carry out the role.
- Set up a sustainability working group of key stakeholders and appoint a sustainability focused governor.
- Sign up to the following organisations.

ACTION	BENEFITS
Sign up to the Morecambe Bay Curriculum HERE	Morecambe Bay Curriculum offers free membership to educators in early years, primary, secondary, alternative provision, special educational needs, and further education. The Morecambe Bay Curriculum collaborates with local educators to develop resources linked to place-based learning, environment, and sustainability. With your help we can transform education by empowering young people to become the change-makers and innovators our planet needs.
www.lancaster.ac.uk/morecambe-bay-curriculum/join-us	
Sign up to Let's Go Zero HERE.	Joining this campaign confirms that your school is taking action to reduce its carbon impact, and that it demands the UK Government support all schools to become net zero by the end of the decade. Everyone is welcome to join the movement, whether you're a decision-maker who's ready to sign up their school for the zero-carbon pledge, or a teacher who wants help encouraging their school head to take the first step. From guidance on retrofitting solar panels and reducing waste to bespoke advice on accessing funding, lower carbon menus and curriculum resources – we're here to help your school go zero carbon by 2030.
letsgozero.org/join	
Sign up to Climate Ambassadors HERE.	Climate Ambassadors can help your nursery, school, college, or MAT to develop a Climate Action Plan. They can help you find the motivation and inspiration to get started or help you to develop your plans and put them into action. Climate Ambassadors offer every education setting in England free access to volunteer support to develop and deliver impactful Climate Action Plans, helping to reduce carbon emissions, tackle climate risks and inspire and inform the next generation.
climateambassadors.org.uk/get-involved	
Sign up to National Education Nature Park HERE	All schools, nurseries and colleges in England can join the National Education Nature Park. The programme and all associated resources are suitable for all education settings, regardless of the amount of outdoor or green space on your site. Taking part in the National Education Nature Park meets curriculum goals, builds educator confidence, speeds up nature recovery, improves wellbeing, contributes to scientific research, and supports Climate Action Plans. All the programme's resources and support are free to use.
educationnaturepark.org.uk/user/register	

1. Decarbonisation and Energy Efficiency

How can your education setting reduce emissions and support students to be part of the transition to net zero?



There are four key areas to consider

Energy use and behaviour change

approx 23% – includes production and use of energy, waste collection and disposal, and water use.

Transport

approx 33% – includes fuel-use in school vehicles, emissions associated with school trips and staff and student commuting.

Procurement

approx 36% – manufacturing of products, environmental impact, and companies these are sourced from.

Food

approx 8% – producing and transporting, and food waste.



Have you measured your setting's carbon footprint/emissions?

What are the total carbon emissions of your setting's operations?

Energy use

How efficient are your setting's buildings and heating systems?

How could your setting retrofit its estate and improve energy efficiency?

Energy-behaviour change

How could your school community change their behaviour to reduce energy use?

Waste and the 3Rs.

Could your setting reduce waste and encourage reuse and recycling?

Transport

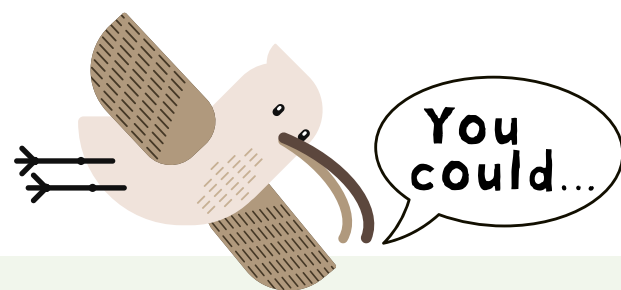
Does your setting have a travel plan which encourages staff and students to take zero/ lower emission forms of travel to and from the setting?

Procurement

Does your setting adopt sustainable procurement practices, including energy?

Food

Could your setting reduce its food waste, e.g. by composting on site?



Energy Use

- Monitor half-hourly energy use and take regular actions to reduce consumption.
- Ensure your "BMS/BEMS" has efficient timings and temperatures set for the school day.

Food

- Try Meat Free Monday.
- Local food producers.

Energy behaviour change

- Take part in a switch-off campaign led by the Eco Team.
- Instruct all staff to follow heating efficiency practices e.g. turn heating down vs opening windows.
- Switch off fortnight.

Transport

- Walk to School.

Waste and the 3Rs

- Regular Zero waste packed lunch challenge.
- Bag to school.
- School uniform exchange shop.

Procurement

- Include sustainability as part of your criteria for procurement e.g. made of recycled materials, non-toxic or ethically sourced.

Helpful Resources

Energy and utilities

Let's Go Zero supports UK schools working to become zero carbon by 2030. It offers free Carbon Literacy training to school Sustainability Leads. They also bring together stakeholders to develop innovative finance solutions for school decarbonisation and retrofit, and its one-off grants scheme, Zero Carbon Fund, for innovative projects helping to cut carbon emissions in UK schools.

letsgozero.org

Count Your Carbon is the nation's first free, full scope carbon emissions tool built for, and in collaboration with, education settings. It helps generate a bespoke carbon footprint and tailored report on how to reduce carbon emissions.

countyourcarbon.org

Energy Heroes enables UK schools to become models of energy efficiency by offering teacher training, energy audit and data handling training for pupils.

energy-heroes.org.uk

Energy Sparks is a charity offering a unique school-specific energy management tool and education programme. Save up to 40% off school energy bills, cut school carbon footprints and give pupils the knowledge and skills to cut energy waste at school.

energysparks.uk

Switch off Fortnight 2025, run by The Pod, puts your students in charge of running an energy-saving campaign, with the tools and resources to help you measure its effectiveness. It is so easy to join in – and it achieves impressive results.

jointhepod.org/campaigns/sof25

Zero Carbon Cumbria is a hub for carbon reduction action, providing information about the impact of climate change in Cumbria and what's being done about it.

zerocarboncumbria.co.uk

Bag2School is a free eco-friendly fundraising scheme that helps schools raise funds through textile recycling as well as spreading textile recycling awareness.

bag2school.com

Transport

The **WOW Walk to School** challenge is run by Living Streets. We want a nation where walking is the natural choice for everyday local journeys.

WOW is a pupil-led initiative where children self-report how they get to school every day using an interactive Travel Tracker. One sustainable journey per week for a month is rewarded with a WOW badge.

WOW schools see 59% fewer car journeys to the school gates.

livingstreets.org.uk/walk-to-school

Procurement

Sustainable procurement in schools is a blog containing lots of things to think about when making your procurement policy sustainable.

educationbuying.com/sustainable-procurement-in-schools

Food

Meat Free Mondays Having at least one plant-based day a week is a fun and easy way to do something good for the planet and our future.

meatfreemondays.com

Food Futures is North Lancashire's award-winning Sustainable Food network. It includes representatives from the local farming community, local food businesses, the public sector, Lancaster City Council, NGOs, community food groups and our local academic institutions all working together to create "A thriving local food system that is healthy, resilient and fair."

foodfutures.org.uk

Zero Carbon Cumbria aims to create a wider awareness of the carbon impact of producing and serving food, and to subsequently encourage people to create, source and enjoy more carbon friendly meals.

zerocarboncumbria.co.uk/low-carbon-food-programme

	Action What are you doing? What have you done? What could/will you do?	Responsibility and Key Stakeholders	Timescale	Information, support agencies and/or resources required	Target/Measure	Progress
Energy use			Start date: Review date:	Useful links:		
			Start date: Review date:			
			Start date: Review date:			
Energy behaviour change			Start date: Review date:			
			Start date: Review date:			
			Start date: Review date:			
Waste and the 3Rs			Start date: Review date:			
			Start date: Review date:			
			Start date: Review date:			

	Action What are you doing? What have you done? What could/will you do?	Responsibility and Key Stakeholders	Timescale	Information, support agencies and/or resources required	Target/Measure	Progress
Transport			Start date: Review date:	Useful links:		
			Start date: Review date:			
			Start date: Review date:			
Procurement			Start date: Review date:			
			Start date: Review date:			
			Start date: Review date:			
Food			Start date: Review date:			
			Start date: Review date:			
			Start date: Review date:			

2. Adaptation and Resilience

Adapting our education buildings and system to prepare for the effects of climate change such as extreme weather.



New school buildings will be designed for a 2°C rise in average global temperatures and future-proofed for a 4°C rise.

Currently nearly half of schools are at risk of flooding (expected to rise to approx. 75-80% by the 2050s).

Overheating in school buildings is a significant threat. Schools have reported that concentration levels of children have been affected because of high temperatures.

A survey of teachers found that 90% had taken action to reduce classroom temperature.



Has your setting undertaken an assessment of climate and extreme weather risks?

Has your setting experienced the effects of extreme weather e.g. high temperatures in summer, flooding of buildings or grounds?

What aspects of your setting's life has been or could be affected by these hazards? What damages were incurred?

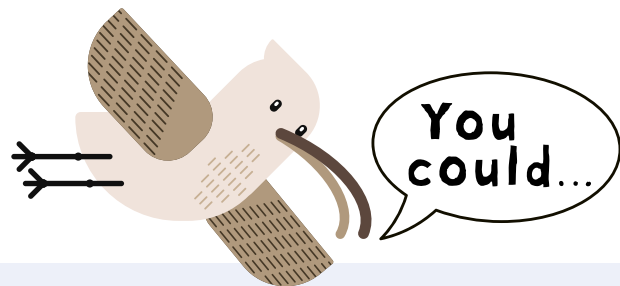
Who are the important people in your setting with responsibilities for preparing for and responding to these events?

Does your setting have any vulnerable staff or students who could be at greater risk from climate-related events?

Is there any important or high-cost infrastructure that your setting needs to ensure it remains operational, e.g. IT equipment, boiler, laboratory, or other specialist equipment?

Does your setting have any existing plans for action in the event of a heatwave or flood?

Does your setting know where it can find out what the local climate might look like in the future and how extreme weather events might change?



- Monitor and record temperatures in classrooms and identify "cool" and "hot" areas of your buildings.
- Complete a water use audit; inspect water fixtures, check for drips and leaks, measure flow rates.
- Use the map climatejust.org.uk resources to investigate flooding and heat risk to your setting and local area.
- Update Health and Safety policy to include procedure for severe weather events, e.g. heat wave.
- Provide shaded areas for pupils to learn and play outside. Provide shading for the school buildings.
- Install rain gardens to prevent flooding, improve drainage, and improve biodiversity.
- Update safeguarding policy to ensure the school community is protected against climate risk.
- Survey climate anxiety and create a climate anxiety management strategy, including CPD.

Helpful resources

Climate Change information

The Met Office has produced a series of 'city and heat packs' to provide non-technical summaries of future climates. Settings can look up their nearest city to find out about their future climate or they can enter their postcode in this 'What will climate change look like near me?' tool.

metoffice.gov.uk/research/approach/collaboration/spf/ukcrp-outputs

Climate Risk Indicator provides information on future changes to indicators of climate risk from local district to national scale.

uk-cri.org

BBC and the Met Office have created a tool to find out what the projections for climate change look like in your area.

bbc.co.uk/news/resources/idx-d6338d9f-8789-4bc2-b6d7-3691c0e7d138

UK Climate Risk is a comprehensive assessment of the risks and opportunities facing the UK resulting from climate change.

ukclimaterisk.org/

Climate Just is a free webtool for public services providers designed to identify who is vulnerable to climate change and fuel poverty and why. Highlight neighbourhoods where climate disadvantage is highest. Explain the factors involved and help you decide what actions to take.

climatejust.org.uk/welcome-climate-just-web-tool

Support

Climate Ambassadors offer free expertise with volunteer climate ambassadors from a broad range of jobs and backgrounds to help deliver meaningful change on sustainability and climate change within the education system. You can contact the North West regional hub, based at Manchester Metropolitan University, at climateambassadors_nw@mmu.ac.uk

Find out more here:

climateambassadors.org.uk/get-involved

Water

United Utilities have a free downloadable teachers' guide to undertaking a water audit.

unitedutilities.com/globalassets/z_corporate-site/education-documents/10402a-water-audit---teachers-guide.pdf

Wyre Rivers Trust is an environmental organisation working for an improved environment, habitats, flood resilience, erosion and water quality across the Wyre catchment in NW Lancashire.

<https://wyriverstrust.org/resources-1>

Food Resilience

Rewilding Roots was established in January 2025. We're an exciting environmental education charity on a mission to help schools across the UK transform their grounds into vibrant, rewilded spaces. It has grown from the highly successful project, *Where the Wildings Are*. Our focus is on creating flourishing food growing areas and integrating outdoor learning into everyday lessons, sparking a love for nature among students.

rewildingroots.org

Food Futures is North Lancashire's award-winning Sustainable Food Place initiative. You will find information about food growing projects, training, resources, and case studies in the regular Thrive magazine.

foodfutures.org.uk

Ford Park, Ulverston offers school visits for primary schools to learn about food growing including compost lasagne and seed planting.

ford-park.org.uk/schoolvisits

	<div>Action</div> <div>What are you doing?</div> <div>What have you done?</div> <div>What could/will you do?</div>	<div>Responsibility</div> <div>and Key</div> <div>Stakeholders</div>	<div>Timescale</div>	<div>Information,</div> <div>support agencies</div> <div>and/or resources</div> <div>required</div>	<div>Target/Measure</div>	<div>Progress</div>
Adaptation and resilience			<div>Start date:</div> <div>.....</div> <div>Review date:</div> <div>.....</div>	<div>Useful links:</div>		
			<div>Start date:</div> <div>.....</div> <div>Review date:</div> <div>.....</div>			
			<div>Start date:</div> <div>.....</div> <div>Review date:</div> <div>.....</div>			
			<div>Start date:</div> <div>.....</div> <div>Review date:</div> <div>.....</div>			
			<div>Start date:</div> <div>.....</div> <div>Review date:</div> <div>.....</div>			
			<div>Start date:</div> <div>.....</div> <div>Review date:</div> <div>.....</div>			

3. Biodiversity and Green Infrastructure

Creating habitats and adopting practices that will enhance species diversity on the school estate and beyond. How can an education setting enhance biodiversity, improve air quality, and increase access to, and connection with, nature?



The State of Nature Report 2023 (stateofnature.org.uk/countries/england) highlighted that due to habitat loss, the UK is in the top 10% most nature depleted countries in the world with nearly 1 in 6 species threatened with extinction.

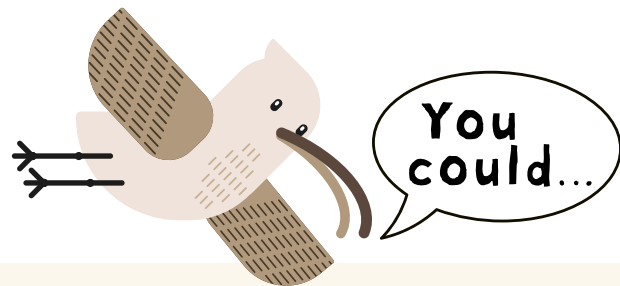
Morecambe Bay has a variety of habitats, supporting flora and fauna such as;

- A quarter of a million migrating birds feed here each year.
- A quarter of the UK's population of the natterjack toad in the sand dunes.
- One third of the UK's orchid species growing in grassland, limestone, and woodland sites.
- The plants growing on the limestone areas support the butterfly and moth species, including the declining High Brown Fritillary.

Morecambe Bay's plants, insects, flowers, and birds are at risk from further decline caused by human activities, climate change, pollution, and unsustainable development. Lapwing and curlew are at risk of extinction.



- Do pupils have opportunities to gain experience in and about nature? Could this be enhanced on your setting's grounds or using facilities elsewhere in the local community?
- Has your setting mapped and recorded biodiversity on your campus?
- What are you doing already to support the biodiversity on your site?
- What do you think you might be doing that could cause a disadvantage to biodiversity on your site?
- Could your setting's estate be managed differently, to provide habitats that serve to enhance local biodiversity?
- Does the estates team need CPD and/or help to provide habitats that enhance local biodiversity?



- Get outside with your learners, looking and exploring. How does what you see, hear and smell make you feel?
- Map your site's habitat areas and identify flora and fauna (using Nature Park tools).
- Determine your site's environmental conditions, e.g. shade, soil type, weather.
- Investigate which wildlife-friendly plants are suited to your site.
- Monitor and report pollinator counts on your site.
- Approximately 97% of flower-rich meadows have been lost since the 1930s, and with them, vital food and habitat needed by wildlife. Participate in No Mow May and give nature a boost. plantlife.org.uk/campaigns/nomowmay
- Plant a Tiny Forest www.earthwatch.org.uk

Helpful Resources

Mapping your settings

National Education Nature Park has a free programme providing educators with the resources, support and guidance needed to put nature at the heart of education. The programme brings nurseries, schools, and colleges together to create one vast nature park. Pupils map their school site by surveying what is living and growing there, record their data on a national online map and then create a plan to improve their school.

educationnaturepark.org.uk

Free mapping tool ArcGIS tools available via Nature Park.

teachwithgis.co.uk/pages/sign-up

Identification of flora and fauna

Eco Schools website includes case studies of how schools have encouraged biodiversity in their settings.

eco-schools.org.uk/ten-topics/biodiversity

"**Seek**" is a free flora and fauna identification education app from iNaturalist.

inaturalist.org

Increasing biodiversity

Campaign for School Gardening free teaching resources, online training courses and awards scheme, designed to nurture young minds.

rhs.org.uk/education-learning/school-gardening

The Tree Council brings everyone together with a shared mission to care for trees and our planet's future. We inspire and empower organisations, government, communities and individuals with the knowledge and tools to create positive, lasting change at a national and local level.

treecouncil.org.uk/young-learning/

Morecambe Bay Partnership have lots of useful resources including bird id leaflets, facts sheets about the Bay plus Beach Clean ups and biodiversity projects re-engaging communities with their environment, like Back on Our Map (BOOM).

morecambebay.org.uk/be-inspired/leaflets-guides

Climate Ambassadors offer free expertise with volunteer climate ambassadors from a broad range of jobs and backgrounds to help deliver meaningful change on sustainability and climate change within the education system. You can contact the North West regional hub, based at Manchester Metropolitan University, at climateambassadors_nw@mmu.ac.uk

Find out more here:

climateambassadors.org.uk/get-involved

Morecambe Bay Curriculum is an educator-led movement to empower children and young people to become the change-makers and innovators that our planet needs, through community-curated, place-based approach to learning about sustainability. Membership is free and includes full access to "Resources for our Bay" and kit.

lancaster.ac.uk/morecambe-bay-curriculum

Ernest Cook Trust Our aim is to enable better educational, professional and life outcomes for each individual as they connect with nature and acquire knowledge and skills. We do this by collaborating with schools, colleges, and a broad spectrum of private and public sector organisations, providing a range of tailored Outdoor Learning sessions, training, and grant funding.

ernestcooktrust.org.uk/what-we-do/everything-outdoors

Cumbria Wildlife Trust have a team of staff and wide-ranging projects around Cumbria that we can match to your requirements at the lowest cost.

cumbriawildlifetrust.org.uk/education-lifelong-learning

Lancashire Wildlife Trust offer a variety of inspiring outdoor learning opportunities for children and young people including school visits to reserves, outreach sessions and adult CPD training.

lancswt.org.uk/education

Little Chatters co-ordinates the outdoor learning network to support Primary, SEND and Alternative Provision settings from across Cumbria, Lancashire, and North Yorkshire in sharing best practice related to Outdoor Learning.

littlechatters.co.uk/outdoorlearningnetwork

	Action What are you doing? What have you done? What could/will you do?	Responsibility and Key Stakeholders	Timescale	Information, support agencies and/or resources required	Target/Measure	Progress
Biodiversity and Green Infrastructure			Start date: Review date:	Useful links:		
			Start date: Review date:			
			Start date: Review date:			
			Start date: Review date:			
			Start date: Review date:			
			Start date: Review date:			

4. Climate Education, Green Skills, and Green Careers

Ensuring the education you provide gives knowledge-rich and comprehensive teaching about climate change, and that your teaching staff feel supported to offer this



In 2020, the government set out its Ten Point Plan for a Green Industrial Revolution. This plan will support up to 250,000 green jobs in 2030, by seeking to develop long-term advantage for the UK in new low carbon sectors, such as electric car manufacturing and offshore wind.

Despite the focus on these low carbon sectors, it is expected that green skills will be needed in every sector.

The UK government has set an ambition for two million green jobs by 2030.

The Local Government Association predicts by 2050, 1 in 13 people in Lancashire will have a higher paid, low-carbon job and in the same period Cumbria Action for Sustainability predict an additional 12,800 local green jobs.

Morecambe Bay Curriculum is a movement of educators, created by and for educators who use place-based learning to ensure sustainability is made relevant every day. Together we focus on how sustainability, environment and place can enhance green skills, wellbeing and pride in where we live. Join us today and help us grow this movement for positive change!



- In what parts of your setting's curriculum do pupils learn about nature, climate change and the importance of sustainability? Could this be broadened and developed beyond geography and science? How could climate change and sustainability education be integrated across all subjects and educational stages?
- How confident are teaching staff in delivering climate change and sustainability material? Do they need CPD? Do they have access to high quality resources?
- Do pupils have opportunities to gain experience in the natural environment? How is this part of their curricula or extra-curricular programme?
- Are pupils made aware of the future career opportunities which exists in the green economy? Do staff have good training and understanding about these opportunities?
- What are the skills that pupils will need to be able to develop to access these careers? How can these skills be embedded across the educational offer?



- Gain external validation for your actions e.g. an Eco Schools award.
- Deliver the Eco-Schools programme in your setting.
- Engage a training provider to build staff knowledge and confidence in carbon Literacy.
- Add climate change to new areas of your curriculum in creative and appropriate ways for your pupils.
- Challenge pupils to deliver carbon cutting actions at home with family, e.g. taking part in Cut your Carbon Campaign.
- Make your next careers event Green themed, highlighting how new and existing roles are becoming sustainable.
- Engage a Climate Ambassador or a STEM Ambassador to visit your school and discuss their career.

Helpful Resources: Climate Education

National Climate Education Action Plan
reading.ac.uk/planet/climate-education/climate-education-plan

The Education and Training Foundation (ETF) recognises the vital role the Further Education (FE) and Skills sector has to play in combating climate change and achieving sustainability and social justice, both nationally and globally. We work to equip and enable the sector to deliver great quality, high-impact education for sustainable development (ESD).

et-foundation.co.uk

Another Way's mission is to empower people to live with kindness towards our planet. Projects include the Power of 10, connecting to build the biggest youth-led community, workshops to empower and overcome barriers people face taking action for the planet, and translating science to communicate the latest solutions-focused advice and environmental science.

another-way.org.uk

Transform Our World includes a guide for teachers who are unfamiliar with the SDGs and want to begin exploring resources.

transform-our-world.org/resources

Teach The Future campaign. Current climate and nature education is inadequate. Students are not being prepared to face the effects of climate breakdown and biodiversity loss or taught to understand the solutions. But we can change this. The UK education system needs to be reformed around climate justice, the natural world, and sustainability. We are campaigning to bring about this change, including suggesting where sustainability can be brought into the National Curriculum.

teachthefuture.uk

The Carbon Literacy Project provides training to raise awareness of the carbon costs and impacts of everyday activities, and the ability and motivation to reduce emissions, on an individual, community and organisational basis.

carbonliteracy.com

Global Link offers courses and projects for young people and adults delivering creative learning and action for a more just and sustainable world.

thegloballearningnetwork.org/about-the-network/global-link

Practical Action free science, technology, engineering, and maths (STEM) resources engage children in real world issues including climate change, renewable energy, food security and disaster preparedness.

practicalaction.org/schools

Take the **Reggio Emilia** child-centred approach to enhance connections and curiosity.

reggiochildren.it/en/reggio-emilia-approach

Morecambe Bay Curriculum is an educator-led movement to empower children and young people to become the change-makers and innovators that our planet needs, through community-curated, place-based approach to learning about sustainability. Membership is free and includes full access to "Resources for our Bay" and kit.

lancaster.ac.uk/morecambe-bay-curriculum

Ministry of Eco Education approach focusses on developing human agency and empowering young people. MEE seeks to unlock wider enrichment opportunities to develop learning beyond the classroom, embedding nature within every aspect of young people's lives. Topics are based around big questions, creating a learning journey which weaves together resources from a variety of environmental organisations.

www.ministryofeco.org

Green Skills

Climate Ambassadors offer free expertise with volunteer climate ambassadors from a broad range of jobs and backgrounds to help deliver meaningful change on sustainability and climate change within the education system. You can contact the North West regional hub, based at Manchester Metropolitan University, at climateambassadors_nw@mmu.ac.uk

Find out more here:

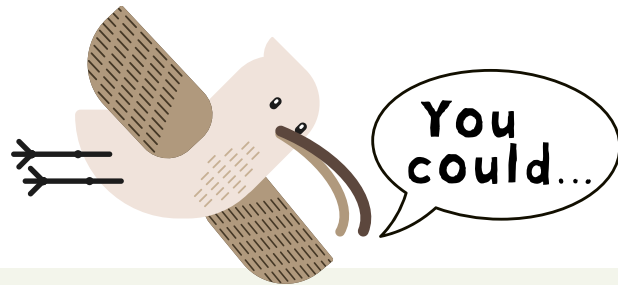
climateambassadors.org.uk/get-involved

	<div>Action</div> <div>What are you doing?</div> <div>What have you done?</div> <div>What could/will you do?</div>	<div>Responsibility</div> <div>and Key</div> <div>Stakeholders</div>	<div>Timescale</div>	<div>Information,</div> <div>support agencies</div> <div>and/or resources</div> <div>required</div>	<div>Target/Measure</div>	<div>Progress</div>
Climate Education, Green Skills, Green Careers			<div>Start date:</div> <div>.....</div> <div>Review date:</div> <div>.....</div>	<div>Useful links:</div>		
			<div>Start date:</div> <div>.....</div> <div>Review date:</div> <div>.....</div>			
			<div>Start date:</div> <div>.....</div> <div>Review date:</div> <div>.....</div>			
			<div>Start date:</div> <div>.....</div> <div>Review date:</div> <div>.....</div>			
			<div>Start date:</div> <div>.....</div> <div>Review date:</div> <div>.....</div>			
			<div>Start date:</div> <div>.....</div> <div>Review date:</div> <div>.....</div>			

5. Leadership and Culture



- The DfE sustainability and climate change strategy states, 'By 2025, all education settings will have nominated a sustainability lead and put in place a climate action plan. This includes early years settings, schools, multi-academy trusts, colleges, and universities.'
- It also sets a target to reduce greenhouse gas emissions by 75% by 2037 across all education settings.



- Who do you need to work with to develop and implement a Climate Action Plan?
- Does your setting have a Sustainability Lead?
- Is your setting's Sustainability Lead within the Senior Leadership Team?
- Does your setting have a designated Sustainability Lead within governance?
- Is sustainability and climate action integrated within your setting's strategic plan/School Improvement Plan?
- Does your setting have a sustainability/ climate action policy?
- Does your setting have a Climate Action Plan?

- Hold a staff INSET day based on UNESCO Sustainable Development Plan to increase awareness of climate justice. Aim for awareness raising rather than detailed knowledge acquisition.
- Offer carbon literacy training to staff.
- Use local network and Morecambe Bay Curriculum to find sources of funding and projects you get involved with.
- Consider how to involve non-teaching staff and what their roles could be in CAP.

- Consider how to effectively communicate ideas, actions and impacts between students, teaching staff, and non-teaching staff.
 - Sustainable Schools for South Yorkshire has lots of case studies, from Early years settings to FE, detailing actions, training and overcoming barriers.
- research.shu.ac.uk/sustainability/category/case-studies

Helpful Resources

Sustainability Support for Education:

[gov.uk/guidance/sustainability-leadership-and-climate-action-plans-in-education](https://www.gov.uk/guidance/sustainability-leadership-and-climate-action-plans-in-education)

DfE Sustainability and climate change strategy:

[gov.uk/government/publications/sustainability-and-climate-change-strategy](https://www.gov.uk/government/publications/sustainability-and-climate-change-strategy)

DfE's engagement has highlighted that settings and trusts have the greatest success in driving change where there is a holistic action plan that is supported by a leadership team with the authority, knowledge, and commitment to take it forward.

[gov.uk/guidance/sustainability-leadership-and-climate-action-plans-in-education](https://www.gov.uk/guidance/sustainability-leadership-and-climate-action-plans-in-education)

Climate Ambassadors resources: stem.org.uk/climate-ambassadors-resources

Cumbria Action for Sustainability (CAfS) and CDEC are working together to support Cumbrian schools to develop their initial 3 year Climate Action Plan. We are committed to enabling your setting to identify and train your sustainability leads, develop Climate Action Plans and offer ongoing support, guidance and connection. cdec.org.uk/news

Notes

RASCI Framework	Description	Role and Name	How groups have been engaged	Target/Measure	Tracker
Responsible	Who has overall responsibility for delivering the Climate Action Plan?				
Accountable	Who is accountable overall? This would usually be a head teacher and the board of governors.				
Support	Who can act as support to ensure success?				
Consult	Who will you consult on matters connected to the Climate Action Plan, e.g. colleagues and pupils?				
Inform	Who needs to be informed about the Climate Action Plan, e.g. parents, networks, school staff?				

Local Support

NW Region

Futureproof Cumbria helps people, communities, and organisations tackle the climate crisis by promoting action and supporting change. They offer events, training, including carbon literacy, networking events and organisation support.

futureproofcumbria.org.uk

Cumbria Development Education Centre.

“Cumbria as a beacon of global citizenship” is our vision – a place where young people, through their global learning experiences, become informed, responsible, and active global citizens with a lifelong commitment to building a fairer and more sustainable world. We are supporting Cumbrian schools to develop their initial 3year Climate Action Plan. Working with school leaders, teachers, office, and ancillary staff as well as pupils and the wider community, we are committed to enabling your school to identify and train your sustainability leads, develop Climate Action Plans and offer ongoing support, guidance, and connection.

cdec.org.uk

Cumbria Wildlife Trust have a team of staff and wide-ranging projects around Cumbria that we can match to your requirements at the lowest cost – sometimes for FREE!

cumbriawildlifetrust.org.uk/education-lifelong-learning

Lancashire Wildlife Trust offer a variety of inspiring outdoor learning opportunities for children and young people including school visits to our reserves/sites, outreach sessions, Forest School programmes, Beach School as well as family activities and Nature Tots. We also offer adult CPD training (including Wild Workshops), Forest School training and team building.

lancswt.org.uk/education

Morecambe Bay Partnership is the only charity solely dedicated to connecting people with the nature, culture, and heritage of Morecambe Bay. From Barrow to Fleetwood, we help raise funds to help keep this place special for future generations.

morecambebay.org.uk

Morecambe Bay Curriculum is an educator-led movement to empower children and young people to become the change-makers and innovators that our planet needs, through a community-curated, place-based approach to learning about sustainability. Membership is free and includes full access to “Resources for our Bay” and kit.

lancaster.ac.uk/morecambe-bay-curriculum

NW Beach Schools provides resources to support you in your Beach School practice.

sites.google.com/view/northwest-beach-school-network

Global Link offers courses and projects for young people and adults delivering creative learning and action for a more just and sustainable world.

thegloballearningnetwork.org

Little Chatters is run by Gina Parker (Mullarkey) offering Continuing Professional Development Opportunities for teachers, sessions for children and resources to support, specialising in Oracy, Thinking Skills, Global and Outdoor Learning for all ages and needs.

littlechatters.co.uk

Rewilding Roots was established in January 2025. We are an exciting environmental education charity on a mission to help schools across the UK transform their grounds into vibrant, rewilded spaces. It has grown from the highly successful project, *Where the Wildings Are*. Our focus is on creating flourishing food growing areas and integrating outdoor learning into everyday lessons, sparking a love for nature among students.

rewildingroots.org

Sources of Funding

Lancaster District Community Volunteers

Service shares funding opportunities in Lancaster District. LDCVS is a responsive charity, believing that the voluntary, community, faith, and social enterprise (VCFSE) sector plays a critical role in tackling poverty and helping the disadvantaged. We challenge oppression and prejudice, promote diversity and work towards building a society with equal opportunities.

lancastercvs.org.uk/funding-opportunities

Barrow Rising is all about making Barrow a better place to live, work, study, visit, and invest. And providing a chance for every resident, business, and visitor to play a role in shaping Barrow's future.

We're making progress, with major projects and initiatives already underway to improve housing, education, transport, and community wellbeing.

barrowrising.uk/2025/03/investing-in-our-community

The Royal Society offers the Partnership Grants scheme which funds schools and colleges up to £3,000 to work in partnership with STEM professionals from academia or industry to run an investigative STEM project.

royalsociety.org/grants/partnership-grants

Solar for Schools was set up with the aim of educating the next generation on energy and decarbonisation. Putting solar panels on school rooftops and then using that solar – and the revenue from it – to enable that education, is the purpose behind Solar for Schools.

solarforschools.co.uk/services/securing-funding

Ørsted Walney Extension Community Fund

Ørsted constructed an extension to the Walney offshore wind farm in October 2015. Ørsted has committed to a fund worth £600k per year for the lifetime of the project.

grantscape.org.uk/fund/walney-extension-community-fund

Lancaster University Wind Turbine Community Benefit Fund

is a unique initiative aimed at supporting local community and environmental projects in the Lancaster District, providing up to £20,000 annually to not-for-profit organisations, charities, trusts, community groups, and voluntary organisations. The wind turbine, which generates around 15% of the university's overall energy demand, has not only contributed to the University's sustainability efforts but also enabled the university to give back to the local community.

lancaster.ac.uk/sustainability/get-involved/community-benefits-fund/how-to-apply

Ernest Cook Trust As leaders in the Learning from the Land sector, we are committed to promoting land-based learning to the widest audience. The potential for growth feeds our desire to forge new connections and collaborations with those who share our vision of a more environmentally engaged society. Outdoor Essentials Grants of £500 are available to help schools with their outdoor learning projects.

ernestcooktrust.org.uk/grants/current-projects

