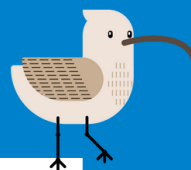


IMPACT 2024/25



EMBEDDING PLACE & ENVIRONMENT INTO EVERYDAY LEARNING

Together, we empower children and young people to become the change-makers and innovators that our planet needs, through a community-curated, place-based approach to learning about sustainability.

THE MORECAMBE BAY CURRICULUM MOVEMENT IN NUMBERS

350+ Morecambe Bay Curriculum Members

63 working group members across 6 educational groups

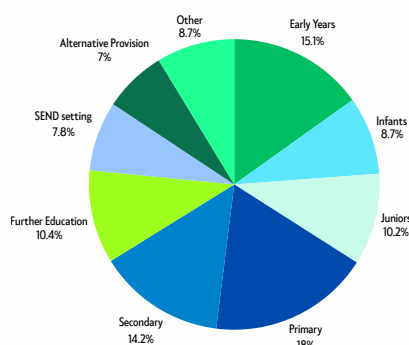
140 Partner schools, colleges and early years settings

14 key local organisations sit on the MBC Steering Group

42% of children and young people in the region attend an MBC school

186 climate action plan conference attendees

OUR MEMBERS



The Morecambe Bay Curriculum is an educator-led movement and a cross-sector partnership supported by Lancaster University, Lancaster and Morecambe College, University of Cumbria and the Eden Project.

WORKING GROUPS

At the heart of the Morecambe Bay Curriculum movement are our working groups where teachers, charities and educationalists come together to dream up what place-based education could look like across all educational ages and phases.



2025/26 Working Group Members at Launch Event in February 2025

In January 2025 we said good bye to the 5 working groups that built the MBC movement, to make way for 6 groups made up of 64 members from across the Bay. These new groups are supported by micro-funding and facilitation to grow activities, campaigns and resources. In June 2025, the groups announced the development of the projects below which will be delivered throughout 2025/26.



Early Years Working Group

Eden Bear will have a new set of 12 health-focused activity cards that will accompany them on visits introducing healthy living topics to under 5's.



Primary Working Group

The 'Why Walk?' campaign will encourage walking in nature to boost mental and physical health.



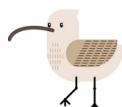
Secondary Working Group

7 secondary schools from around the Bay are supporting student-led sustainability projects and will celebrate and share together in 2026.



Further Education Working Group

The 'Green Side Hustles' project will support students to develop environmentally friendly business ideas.



Alternative Provision Working Group

The 'Virtual Backpack' is a non-linear, project-based approach to learning about environment and sustainability.



SEND Working Group

'Nature Ninjas' uses eco-action cards to help SEND students to be active, access nature and discover their local environment throughout the seasons.

ANNUAL CONFERENCE

3 national partners supported the conference; Let's Go Zero, National Education Nature Parks and Climate Ambassadors

186 attended sessions designed to support the development of Climate Action Plans

28 individual sessions covering de-carbonisation to developing sustainability leads in schools

Community members gathered on the 4th July for the annual conference. The day was designed to support educators to develop high quality Climate Action Plans, helping schools in their journey towards sustainability.

Over the course of the afternoon, participants enjoyed stalls, sessions and workshops on a variety of themes delivered by conference partners as well as friends from Natural England, Another Way, Our Future Coast, CDEC, Futureproof Cumbria, JBA trust, Global Link, Rewilding Roots and LUSU Green.

Feedback was overwhelmingly positive and highlights for participants included opportunities to network and build community, practical insights and inspiration and space for learning and reflection.

'I feel really inspired to get stuck in to being a climate change pioneer in school – and getting everyone on board.'

- Conference Participant



PROJECTS

As a teacher-led movement, we are proud of the projects educators create in order to embed head, heart and hands into daily learning. Together we are building a pedagogical practice that is unique to our area and supports the development of young people's wellbeing, skills and feeling of belonging.

GREEN PASSPORT

Lancaster and Morecambe College and Myerscough College empowered 30 FE students to take action for the environment and explore sustainable careers.

Students learnt from real sustainability examples, presented by Lizzi Collinge MP, Patrick Grant (GB Sewing Bee) and organisations including Lancaster City Council, Eden Project, and Nature Parks.



Meeting industry experts at Lancaster University

The most important thing I have learnt in these sessions TO ME, is that I'm not alone. I've learned that there are many people (though not enough) who share my concerns for the planet'

71%

now frequently think about the environmental impact of daily actions

LOCAL LEGENDS

Pupils Creating Local Myths, Legends and Historical Stories

'Local Legends' contains 7 new stories rooted in our area, written by and for children. Imagined by teachers with support from Lancaster University, children and teachers researched, wrote and presented stories rooted in their school's local environment. Workshops with storyteller Emily Hennessey, Primed for Life and Lancashire County Council supported story telling and writing skills.



Morecambe Road students illustrating their story 'The Road to Happiness'

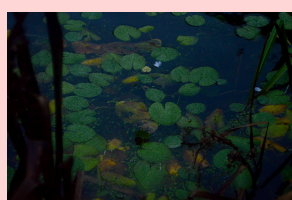
3 CPD workshops were held at Lancaster University & Lancaster and Morecambe College

7 schools created 7 new stories that celebrate the rich history of the Bay

University of Cumbria's trainee teacher 'Think Tank' worked with local schools on place-based story writing, inspired by this project.

RIPPLE EFFECTS

Inspired by Ripple Effects International and Global Link's Blue Influencers.



1st Place, Harlem, 17

42 8-18 year olds engaged with the photography competition exploring local water-ways

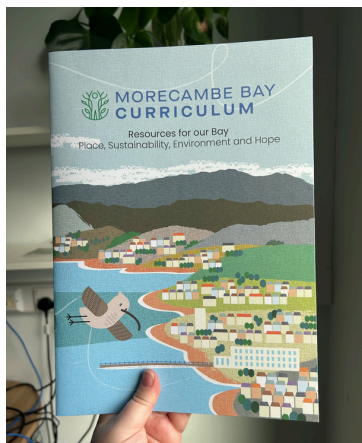
EDEN BEAR

Eden Bear visits children to celebrate what they love about the Bay



80 Visits to nurseries, childminders and early years settings

RESOURCES FOR OUR BAY



330 copies of **'Resources for our Bay: Place, Sustainability, Environment and Hope'** were sent to every school and college around Morecambe Bay in September 2024.

Throughout 2024/5, the Morecambe Bay Curriculum community have been embedding the 16 resource packs co-produced by educators and Lancaster University academics as part of the 'Resources for our Bay' project. The Morecambe Bay Curriculum team have delivered 5 CPD sessions for teachers and shared the resources at a number of forums including Cumbria's Primary Heads Association Conference, the 2025 Outdoor Learning Conference and the Lancashire Youth Summit.

Case Study: 'A Day at the Beach'

In 2024, Lynn Reddy, a teacher from Greengate Juniors in Barrow, worked alongside Lancaster University's Dr Suzi Ilic on 'A Day at the Beach', a resource designed to give teachers the confidence needed to embrace outdoor education on the beach.

In 2025, Lynn has been developing this work further by collaborating with George Romney Primary and mentoring an early career teacher. Together they designed and delivered a trip to Earnse Bay that empowered young people to undertake independent exploration, mapwork, tide-line treasure hunts and shell identification.



'Despite this being a local location for a trip, many of our children had not been before so this was a great opportunity' - George Romney Teacher

FEEDBACK FROM OUR TEACHER COMMUNITY

'It's been a really interesting tool to use when introducing learners to the world of construction, teaching them that there's more to the industry than just the everyday processes that we already do and pushing them to think analytically about the potential future of construction and inspire a problem-solving approach.'

'I love being able to link topics to local data and explore how theory plays out in the real world. I always see more interest if ideas are local.'

'Engaging the children with resources that are local to them and they can engage with. It makes it feel 'real'.'

SHARING OUR MESSAGE BEYOND THE BAY

Morecambe Bay Curriculum is increasingly recognised as an initiative of national significance: an educator-led, place-based model that empowers young people to become climate-literate change-makers.

TV & News:

- 'Resources for Our Bay' featured on Granada Tonight to an audience of 418,000, with the presenter saying *'I think this should be rolled out nationally'*.
- The Lancaster Guardian celebrated MBC's 'Ripple Effects' photography competition.

Blogs and Podcasts:

- Dr Beth Garrett, Lecturer in the Morecambe Bay Curriculum, featured on the Ministry of Eco Education's 'Ask an Expert' Series and the Transforming Tomorrow podcast.
- The British Education Research Association spotlighted the blog 'Head, Heart, Hands and the Bay: Transforming Education through Place' by Beth Garrett and Ceri Holman, Senior Research Associate, in email to 3000 members.

Talks and Conferences:

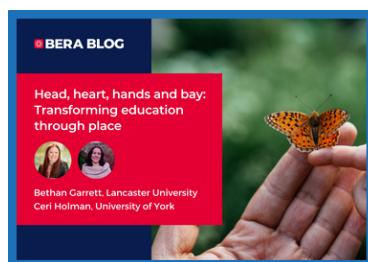
- Beth Garrett presented the keynote speech to 150 at the Edge Foundation's Sustainable Education Summit on Morecambe Bay Curriculum.
- Presented at BERA 2024 and 2025, the UK's biggest education conference, with over 1000 delegates; 'Codesigning education with local teachers and academics through genuine partnerships of trust'.
- The Green Passport Pilot was presented at the EAUC conference, attended by 200 delegates, by Maggie Cawthorn and Beth Garrett
- At both CivicCon and CivicLab, the project was presented to 300+ as an example of best practice for how universities can make an impact as Civic Institutions.

Publications:

- 'Embedding environment, sustainability and place into education through teacher-researcher collaborations: The Morecambe Bay Curriculum's innovative co-design project' by Beth Garrett published in Possibility Studies and Society Journal.
- N8 Research Partnership's Child of the North Report, 'An evidence-based approach to creating a culture of inclusive opportunity through arts and creativity' featured the project as an example of best practice.

Campus in the City: 300 local residents celebrated the Bay through clay-model making at Lancaster University's foremost community engagement event.

Morecambe Bay Curriculum is contributing towards regional and national policy development through it's membership of the National Climate Education Action Plan group, the Climate Education and Skills group, the Deeper Learning network, FED North, Ripple Effects Intl and OCR's Natural History GCSE advisory panel.



THANK YOU

The Morecambe Bay Curriculum exists because of the educators who bring it to life every day inside and outside of their classrooms. Thank you to every teacher, educator, tutor, early years practitioner and assistant who has helped build this movement from the ground up.

Thank you to everyone who brings their energy and expertise to the Working Groups; Ascentis, Blackpool Sixth Form College, Carter's Charity Primary School, Cumbria Development Education Centre, Cartmel Priory CE School, Eleanor Levin Tours, Fylde Coast Academy Trust, George Hastwell School, Grange CE Primary School, Garstang Community Primary School, Hawthorn Education Services, Lancaster & Morecambe Chamber of Commerce, Lancaster & Morecambe College, Lancaster High School, Lancashire County Council, Lancaster University, Lancashire Careers Hub, Little Chatters, Lancashire Wildlife Trust, Morecambe Bay Academy, Morecambe Bay Partnership, Myerscough College, National Education Nature Parks, Overton St Helen's Primary School, Our Lady's Catholic College, Primed for Life, QESudio School, Sandcastles Nursery, South Cumbria PRS, South Walney Infant and Nursery School, St Bernadette's Catholic Primary School, St Mark's CE School, St Paul's CE Junior School, The Ernest Cook Trust, The Lakes School, Underley Garden School, University of Cumbria, Westmorland & Furness Council and Wyre Rivers Trust.

Thank you to the Steering Group for your wisdom and direction; Another Way, Cumbria Development Education Centre, Eden Project, Global Link, Lancashire County Council, Lancashire Skills Hub, Lancaster & Morecambe College, Lancaster District CVS, Lancaster University, Morecambe Bay Partnership, Natural England (Earnse Bay), NHS Bay Medical Group, NHS Lancashire & South Cumbria Integrated Care Board, University of Cumbria and Westmorland & Furness Council.

Thank you to the Partnership Board for recognising and amplifying this work, this support enables the movement to continue to grow and flourish, benefitting our community and planet.



The Morecambe Bay Curriculum Partnership Board consists of Lancaster and Morecambe College, University of Cumbria, Eden Project and Lancaster University.



Morecambe Bay Curriculum founding community celebrating 6 years of Working Groups

Thank you to Lancaster University for funding the Morecambe Bay Curriculum team.

