

Glenn's House

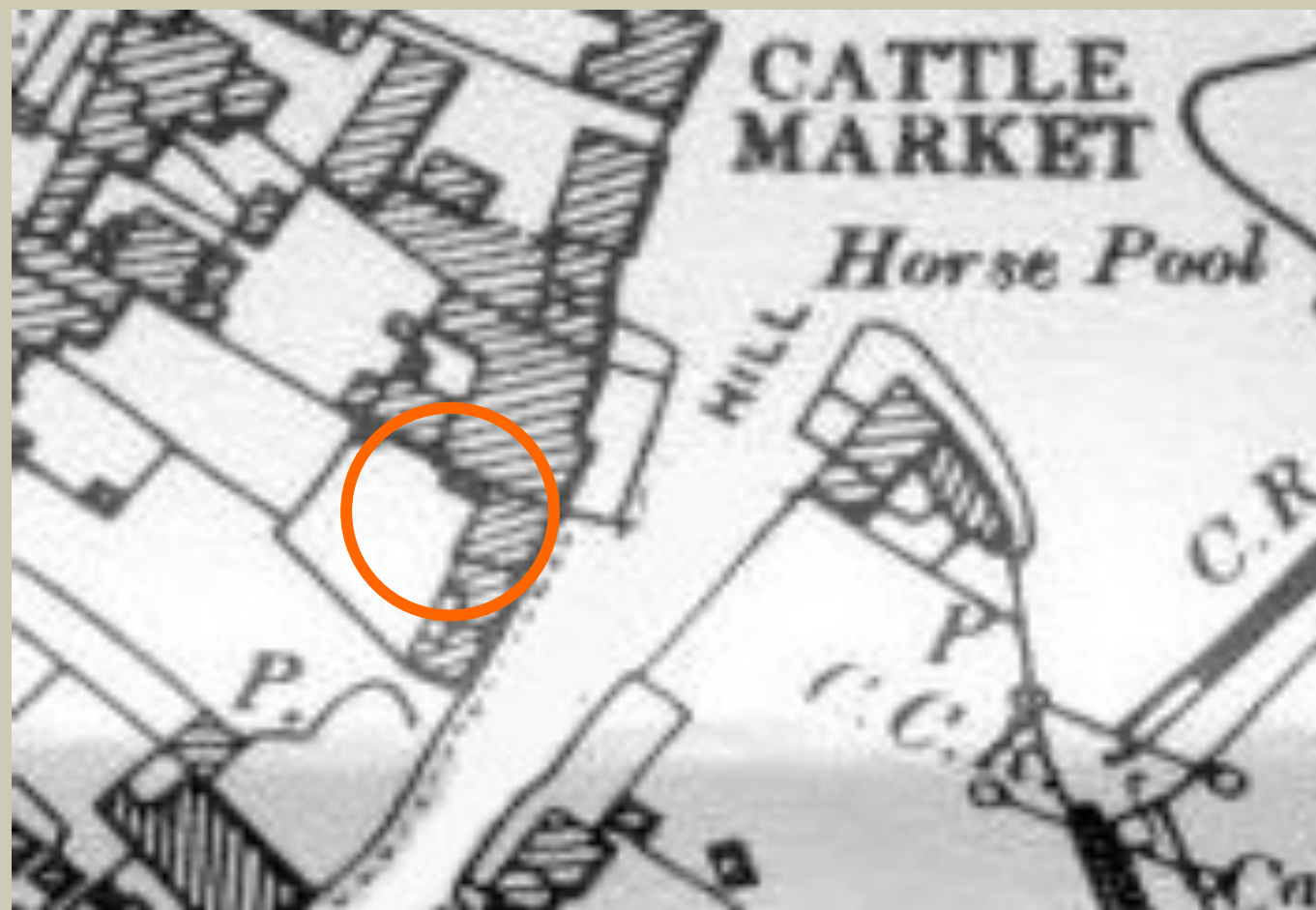
Household infrastructures constrain and enable consumption



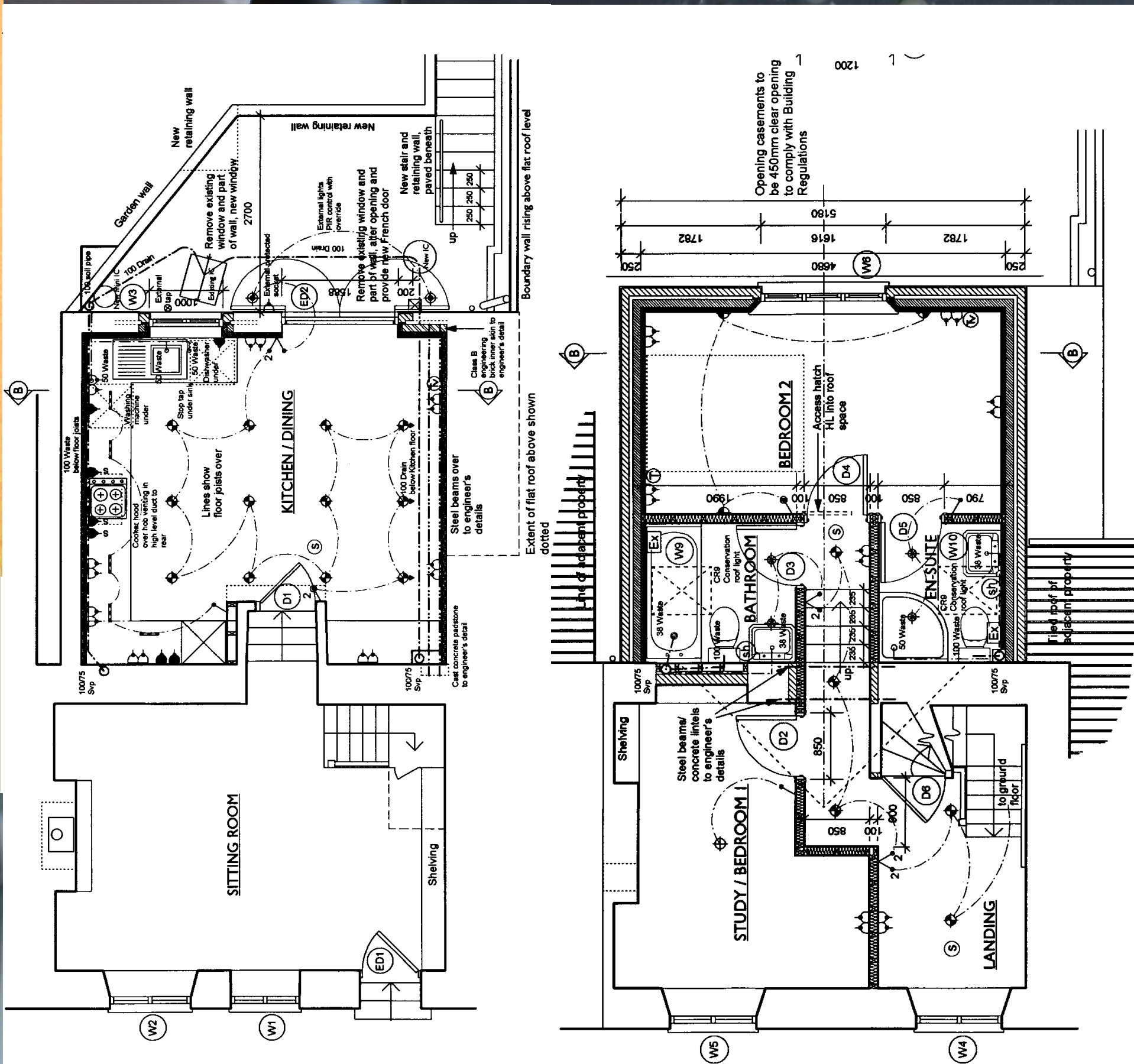
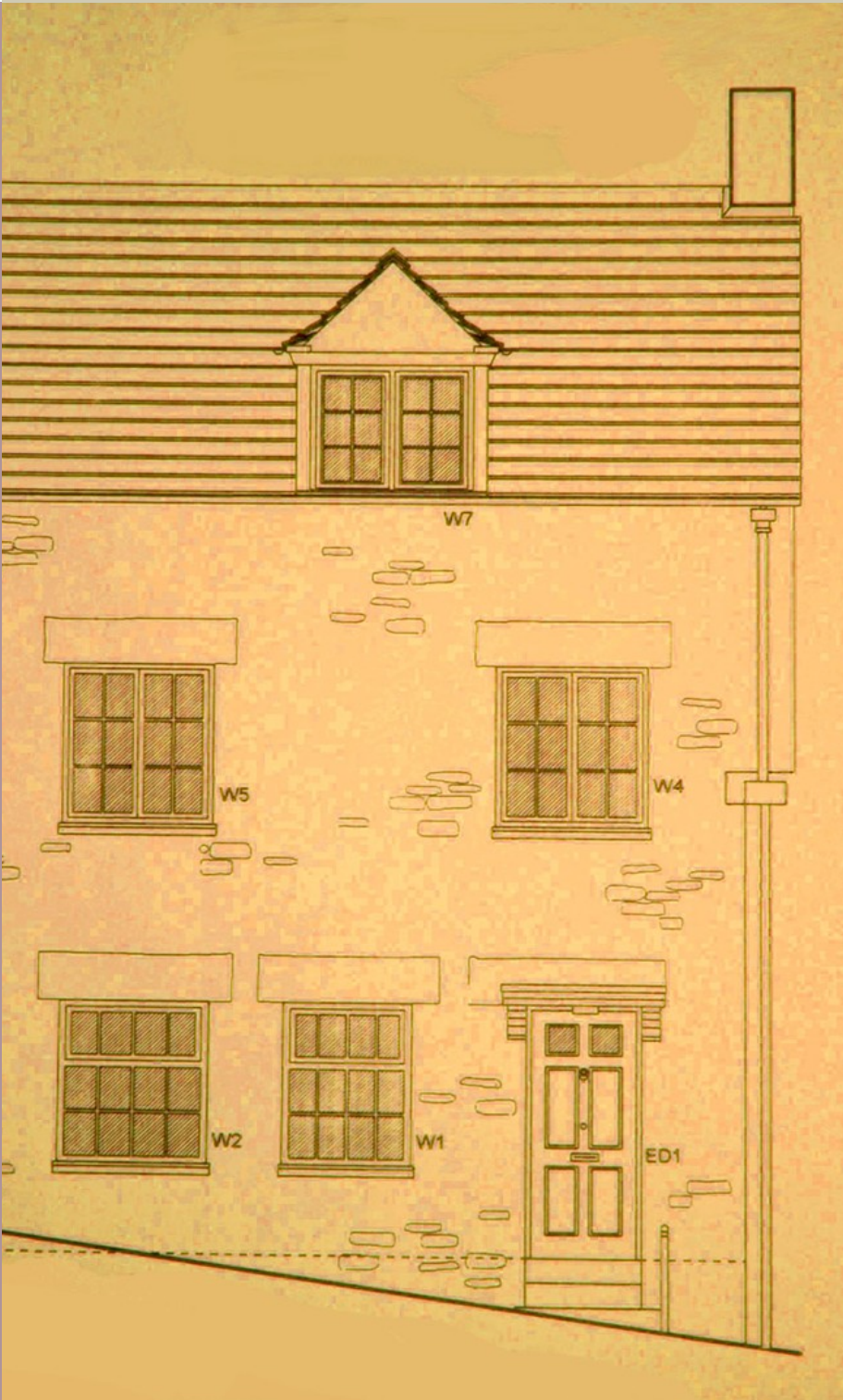
Over the last century opportunities to consume energy and water have increased dramatically.

This is revealed by the recent history of Glenn's house.

- 1800 Collect water from a pump
 - 1920 Water from a tap in the yard, outside toilet
 - 1930 Indoor water in kitchen lean to, outside toilet
 - 1960 Indoor bathroom, ground floor
 - 1970 Plumbed in washing machine, outside tap for garden. Central heating.
 - 2006 Upstairs bathrooms, dishwasher
- What will the owners add next?



■	Suspended track light system
▲	Wall light unit
◆	Recessed ceiling spotlight unit
⊕	Ceiling light unit
⌞	Under wall cupboard tungsten light unit
◆	Recessed low voltage halogen bathroom light fitting
◆	Recessed directional ceiling spotlight unit
◆	External water tight light unit
⌞	Power socket 350mm high or 150mm above worktop
⌞	Unswitched power socket - sepearate switch above worktop
⌞	Power supply for oven/cooker/hob and for extractor
⌞	Unswitched 5A socket for lamps
⌞	Unswitched 5A socket - floor mounted with flap for lamps
⌞	Light switch
⌞	Light pull switch
⌞	Dimmer Light switch
W	Power for waste disposal
sh	Shaver socket
⌞	Telephone point
⌞	Television point
S	Smoke detector
A	PIR Burglar alarm sensor
Ex	Extract Fan



Glenn's house has a history that is not of his own making. In renovating his home, he changes the infrastructure of the future. He has added socket outlets, extra lighting and two upstairs bathrooms.

