

RGCalc – a brief overview

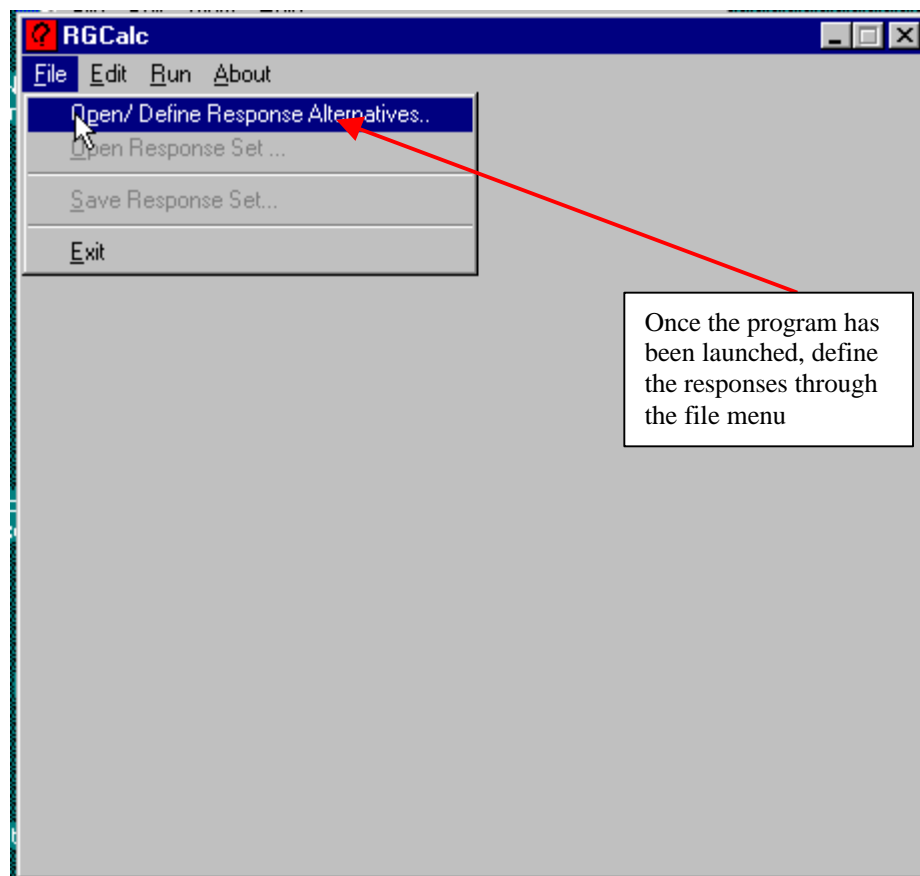
(this document last revised, 29 January 1998)

Details of RGCalc are provided in Towse & Neil (in press)¹. The following provides a quick overview on the program.

The use of RGCalc can be broken down into a number of separate sections. These are

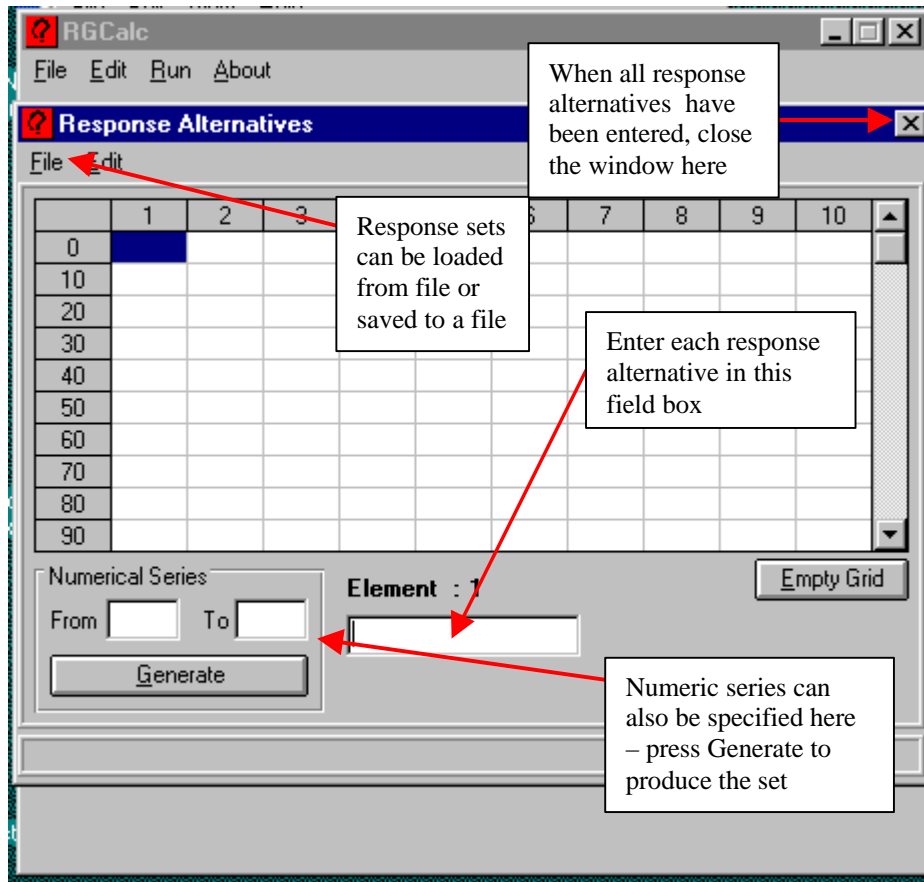
- 1) Specifying the response vocabulary, that is, defining the response alternatives
- 2) Specifying the responses that make up the randomly generated set
- 3) Performing the randomness analyses on the response set.

In order to begin, therefore, the user must first define the response alternatives. As illustrated below, use the File menu to open the response alternatives window.



¹ Towse, J.N., & Neil, D. (in press). Analyzing human random generation behavior: A review of methods used and a computer program for describing performance. Behavior Research Methods, Instruments and Computers.

From here, the response alternatives window is created, as shown below. Where the responses are from a continuous number series, it may be easiest to specify them by using the “Numerical Series” box. When the responses have been identified, click on the close icon at the top of the window.



The responses themselves can now be entered. This can be done manually, by selecting cells and entering the appropriate response values. Entering a value and pressing the return key will place that value in the response cell, and move the entry field onto the adjacent cell. If the response set has been pre-stored as a delimited file, then it can be loaded into the response window from the “Open Response File ...” option from the File menu. When loading a response file, the type of file is indicated in the pull-down menu – by default, ‘txt’ suffix files are shown. Responses can also be entered into a window by using the “Cut”, “Copy”, and “Paste” options that are available from the “Edit” menu and also by right-clicking on the mouse.

When at least one response has been entered, the set can be stored by using the “Save Responses File ...” option from the File menu.

As can be seen below, other options are available, and these should be self-explanatory in nature.

The screenshot shows a software window with two main tables and a control panel at the bottom. The top table, titled "Response Alternatives", has columns numbered 3 through 10. The bottom table, titled "Responses", has columns numbered 1 through 7 and rows numbered 0 through 90. The control panel includes a "Pseudo-random Set" section with a "Sample Size" input field and a "Generate" button. To the right, there is a "Response : 1" label, an input field, and buttons for "Empty Grid" and "Calculate".

The following callout boxes provide instructions:

- Top-left callout:** "The responses must be part of the permitted set that is specified here" (points to the "Response Alternatives" table).
- Top-right callout:** "Click on a cell to enter the desired response using the response field box" (points to a cell in the "Responses" table).
- Bottom-left callout:** "You can enter the number of pseudo-random numbers to produce and then press the Generate button" (points to the "Sample Size" input field).
- Bottom-right callout:** "When you have entered the numbers, press the calculate button to analyse the set" (points to the "Calculate" button).